



**Product Catalog**

STYLE **FUNCTION** COMFORT

## OUR COMPANY

Flight Dental Systems is a Canadian owned and operated dental equipment manufacturer with sales in over 25 countries globally. It is one of the fastest growing dental equipment manufacturers in the industry and its philosophy has always been to produce an innovative product with exceptional design, reliability and quality, at an affordable price. This philosophy is evident throughout the Flight product line, as each item is meticulously designed and engineered to suit the needs and requirements of every practitioner. In addition, Flight Dental Systems continues to improve its products through extensive R&D to provide the best possible product for the best possible price to it's customer.



# A6 PATIENT CHAIR

## STANDARD FEATURES



### DESIGNED & ENGINEERED IN CANADA

Designed and Engineered in Canada according to the highest ISO 13485:2016 Standards. Perfect form and function to ensure the operator achieves the best ergonomics to achieve the best results while providing the patient the most comfortable stress-free experience.



### FUNCTIONAL DESIGN

Dual Drop Down Armrest allows for easy Patient Access and exceptional support when the patient is in the supine position.



### ERGONOMIC DESIGN

Thin Backrest and Seatrest allows better access to the oral cavity while maintaining patient comfort with the memory foam support. The synchronized compensating backrest provides optimal patient and operator comfort during any procedure.



Linak Motor  
From Denmark



Memory Foam



Hydraulic System  
Made In Japan

- ✓ A6 Hybrid Patient Chair (Hydraulic and Electromechanical)
- ✓ Hydraulic Base and Electromechanical Back Rest
- ✓ Seat Height 14.6" to 27.4" (370mm to 697mm)
- ✓ Backrest Reclining 4 degree to 67 degree
- ✓ Double Articulating Headrest
- ✓ Electronic Deluxe Foot Control: 2 Programmable Positions,
- ✓ Auto Return and Last Position
- ✓ Input Voltage (110v or 220v)





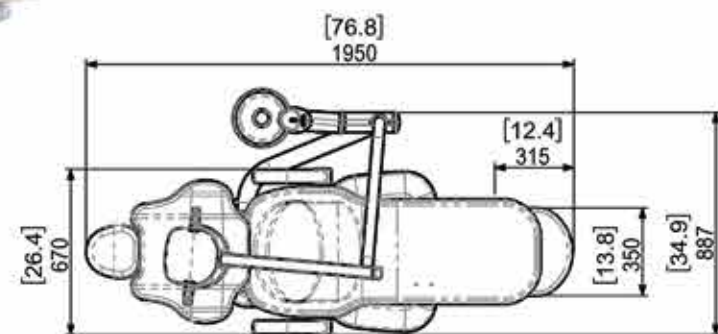
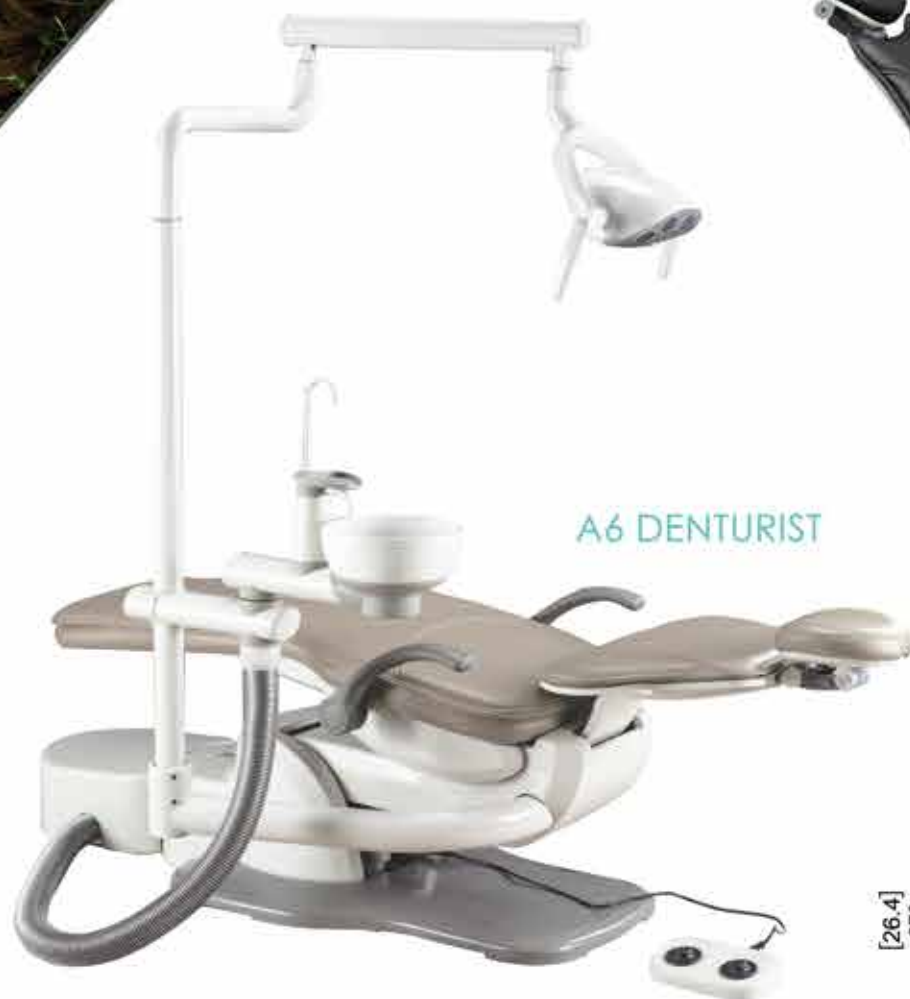
# A6 SPECIALTY PACKAGES

## STANDARD FEATURES

A6 ORTHO



A6 DENTURIST



OPTIONAL  
CUSPIDOR

Optional Post Mounted Cuspidor is available. The one-piece ceramic cuspidor with timed cup fill and bowl rinse controls is easy to use and set up.



SIMPLE & CLEAN  
DESIGN

Excellent Design for orthodontic or denturist office. Light can be mounted on the left or right side of the dental chair

ERGONOMIC

The A6 Chair is designed ergonomically and suitable for patients of all sizes. The chair comes with premium memory foam comfort and security.



- ✓ Hybrid Chair Lift Mechanism
- ✓ Slim and Streamline to fit smaller Patients
- ✓ Light can be mounted on the Left or Right side of Chair
- ✓ Torch LED Light Included – Hands free Sensor
- ✓ Includes Deluxe Foot Control
- ✓ Optional Chair Mounted Touchpad



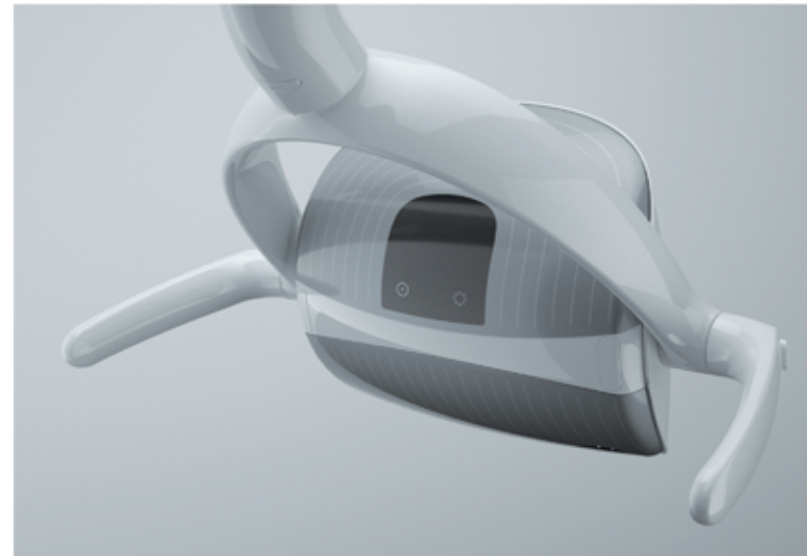


# TORCH LED LIGHT



## STANDARD FEATURES

- ✓ Direct LED Light Bulbs - 50,000 hr life expectancy
- ✓ Energy Efficient, No Heat Production
- ✓ Triple Axis movement of Light Head
- ✓ Sensor control for on/off of light
- ✓ Removable handles for cleaning
- ✓ Shadow less Rectangular Pattern
- ✓ Colour Temperature: 5500K
- ✓ Light Intensity (Lux): High 30,000; Low 8,000



# IRIS LED LIGHT

- ✓ Free Movement as a result of 3rd axis
- ✓ Low Energy Consumption <20w
- ✓ No Fan, less noise and improved working conditions
- ✓ Low Heat Production
- ✓ LED life expectancy is about 50,000 hours
- ✓ Patented Colour Temperature Adjustment
- ✓ 3 Modes (Cure Safe Mode, Surgical Procedures, Colour Matching Mode)
- ✓ Made in Italy
- ✓ Colour Temperature: 4200- 6000 K (5 Adjustable Steps)
- ✓ Light Intensity (Lux): High 35,000; Low 8,000 (5 Adjustable Steps)
- ✓ CRI (Colour Rendering Index) : >90%



**Anti-polymerisation Mode**  
3000 K, minimises blue emission,  
reducing the compound  
curing speed;



**Colour Matching Mode**  
5500 K, creates a combination of cool and  
warm LEDs that maximises the colour  
rendering index, facilitating the dentist's  
choices during tooth replacement operations.



**Surgical Mode**  
4500 K, optimises the colour  
contrast on the soft tissues, better  
distinguishing the shades of the  
gums, blood and periodontium;

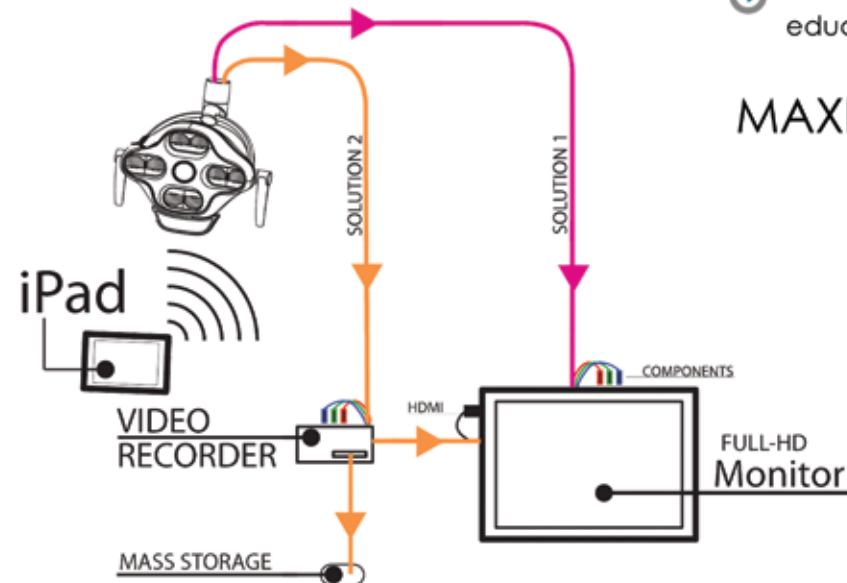
# iVIEW CAMERA & LIGHT

# MOUNTING OPTIONS

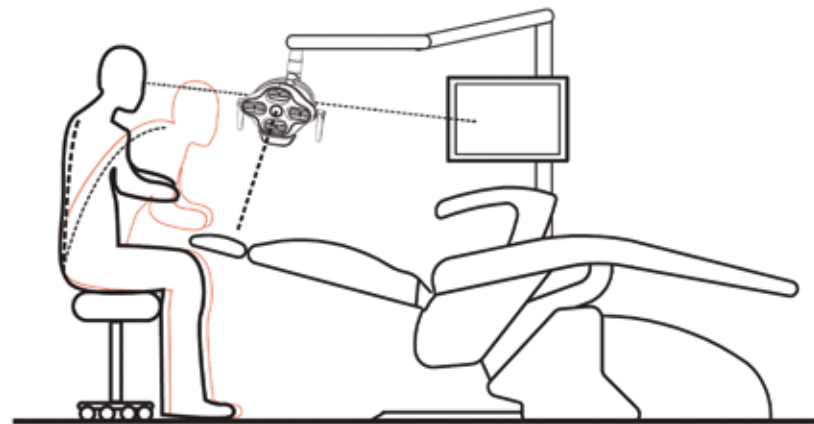
## STANDARD FEATURES

- ✓ Full HD (1920 x 1080px) Camera with 30x Optical Zoom
- ✓ Built in WiFi control for light and camera through an iPad App- My Light
- ✓ Freeze Frame and Recording Capability
- ✓ Provides a detailed image of the operating area
- ✓ Improves ergonomics with indirect dentistry and reduces strain on back, shoulder and spinal cord
- ✓ Relieves eye strain by allowing the camera to focus in on a specific area
- ✓ Allows the multimedia documentation of procedures in high definition
- ✓ Live streaming capabilities, excellent for conferences, teaching schools hospitals and university lectures
- ✓ Improves and facilitates better communication with patient
- ✓ Allows better communication during diagnosis and allows better education for patient by providing real-time video streaming

## MAXIMUM LIGHT QUALITY



MORE **ERGONOMIC** LESS STRESS



RECORD, **DOCUMENT**, SHARE

## CHAIR MOUNTED **LIGHT**



Model:LL-306G – IRIS  
Model:LL-305F - Torch  
Model:LL-306GIV - (iView)

## WALL/CABINET MOUNTED **LIGHT**

Model:CWL-305F (Torch LED)  
Model:CWL-306G (IRIS LED)  
Model:CWL-306GIV (iView)



## CEILING MOUNTED **LIGHT**

Model:CL-306G – IRIS  
Model:CL-305F - Torch  
Model:CL-306GIV - iView





# MK DENT HIGHSPEED HANDPIECE



## HB23K - MK Highspeed

Single Spray, No Light, Mini Head

## HB23KL - MK Dent Highspeed

Single Spray, With Light, Mini Head

## HE22KL - MK Dent Highspeed

Triple Spray, with Light, Mini Head

## HE21KL - MK Dent Highspeed

Quad Spray, with light, Standard Head



**Triple Spray**  
Quick & Efficient  
Cooling

**Fiber Optic  
Illumination**  
Clear & Bright  
Illumination

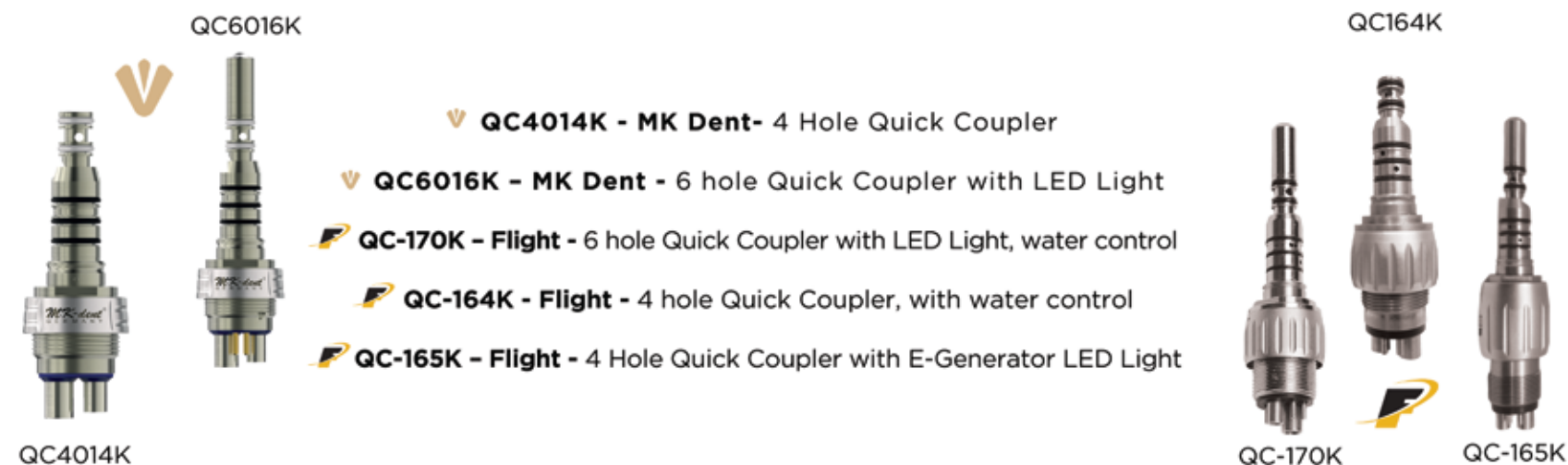
**Push Button Chuck**  
Easy to Release  
and Engage Bur

**German  
Ceramic  
Bearings**  
Quality  
Precision

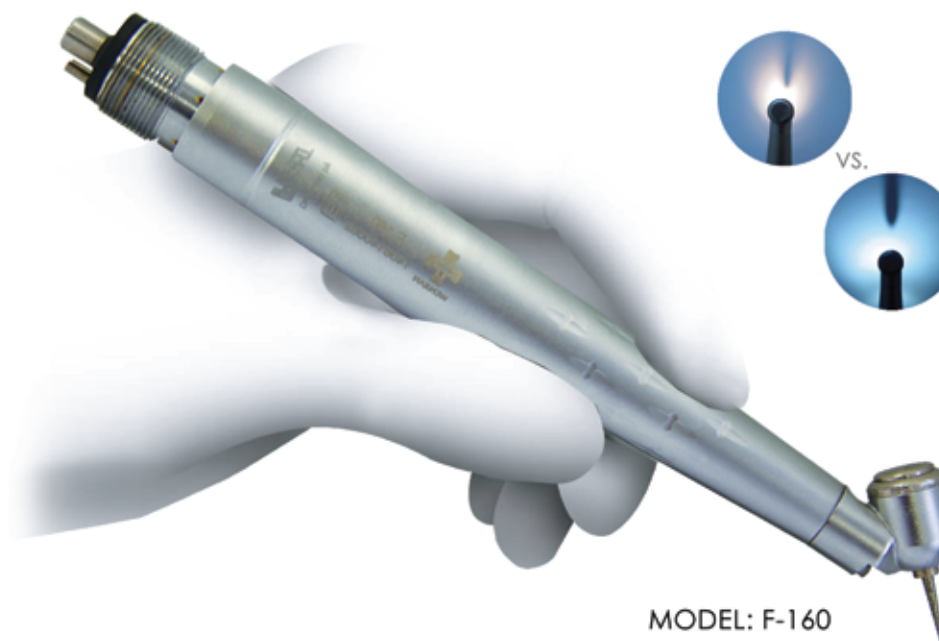
**Quiet and  
Comfortable  
Operation**  
Low Noise  
and Powerful

# HIGH SPEED HANDPIECES

## COUPLERS



## SELF-GENERATED LED 45° SURGICAL HANDPIECES



MODEL: F-160

## FEATURES

- ✓ 350,000 RPM
- ✓ Single Water Spray
- ✓ Rear Exhaust Air
- ✓ 25,000 Lux LED Light – Self Generating
- ✓ 4 Hole Midwest Connection
- ✓ 21W Torque

# SLOW SPEED HANDPIECE COLLECTION



## ONE PIECE HANDPIECES



## AIR MOTOR



**AM0004**  
MK DENT 20K AIR MOTOR  
NO WATER

## EXTERNAL WATER - NSK COMPATIBLE



## INTERNAL WATER SPRAY - KAVO COMPATIBLE





# ELECTRIC MOTORS

## LIGHTWEIGHT, POWERFUL AND QUIET

Flight Electric Motors systems helps to improve efficiency, reduce aerosols while providing a more comfortable patient experience. The Flight Electric system combines the state of the art light weight micromotors with a LED system and quiet and vibration free electric solution.



**EM-9001**  
Flight Tabletop Electric Motor,  
3.4Ncm Torque, 1 Motor



**EMB-9002**  
Flight Built in Electric Motor System,  
3.4Ncm Torque, 1 motor



### MX2 LED Micro-Series

Type	Brushless, with internal spray
Max Torque	3.5 N
Speed Range	100-40,000 rpm
Weight	94 gr

**Bien Air**  
Dental

## ELECTRIC CONTRA ANGLE ATTACHMENTS

**MK-dent**  
GERMANY



LE11 MK Dent

▼ **LE11 MK Dent**  
1:1 Contra Angle,  
CA Burs



LE15L MK Dent

▼ **LE15L MK Dent**  
1:5 Contra Angle  
with Light, FG Burs

## PREMIUM OIL LUBRICATION

▼ **LU1011**  
MK Dent Premium Synthetic Oil  
- Spray Can

▼ **LU1022**  
MK Dent Premium Synthetic Oil  
- Spray Can Compatible  
with Kavo Quattrocare,  
Scican Statmatic

▼ **O-3205**  
Flight Premium Maintenance  
Oil (1000 ml)



## ADAPTERS



▼ **PN: LT1014**  
FG Spindle



▼ **PN: LT1013**  
Slow Speed Attachments

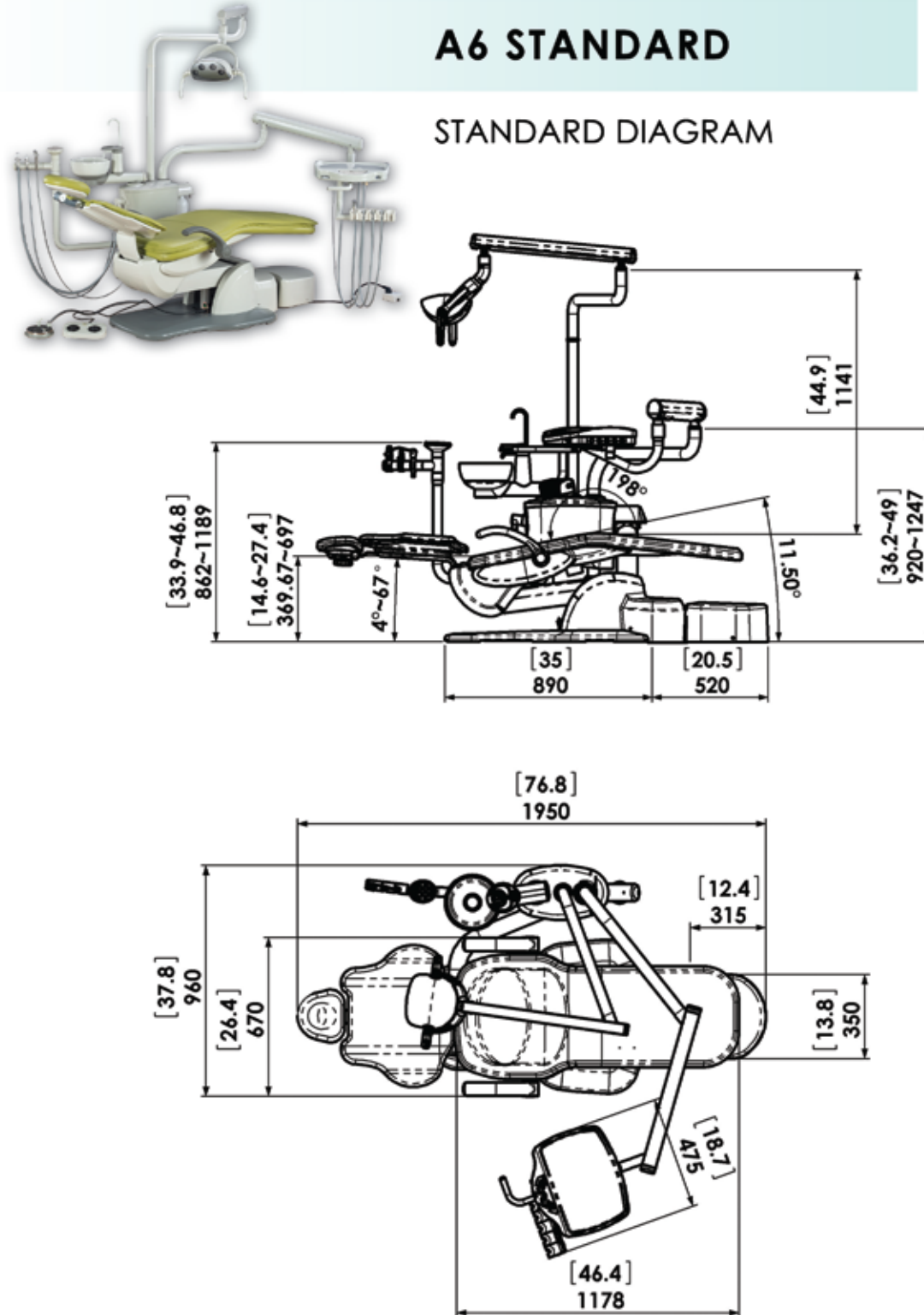


▼ **PN: LT1012**  
Fits Kavo High Speed

# CHAIR DIAGRAMS & DIMENSIONS

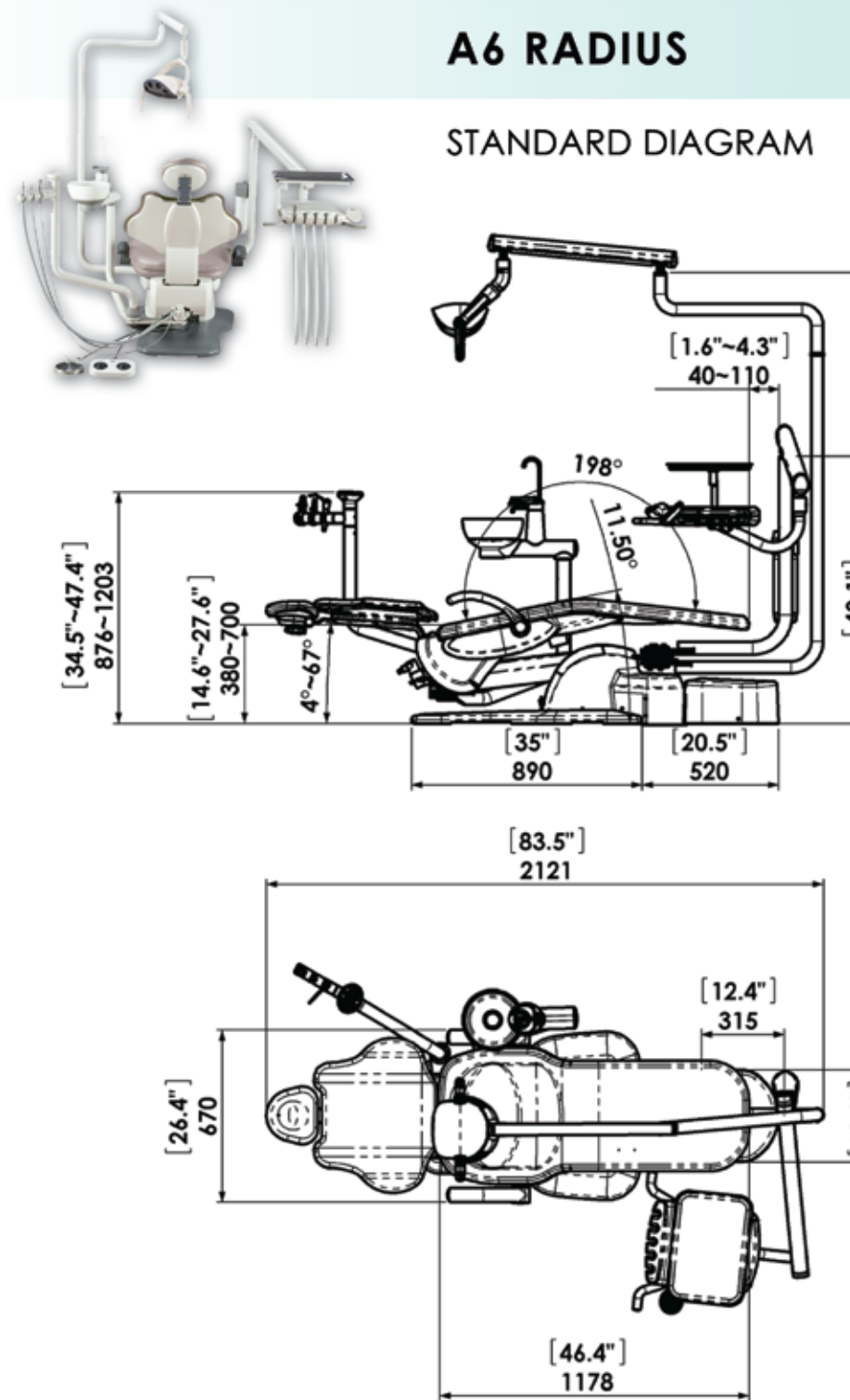
## A6 STANDARD

STANDARD DIAGRAM



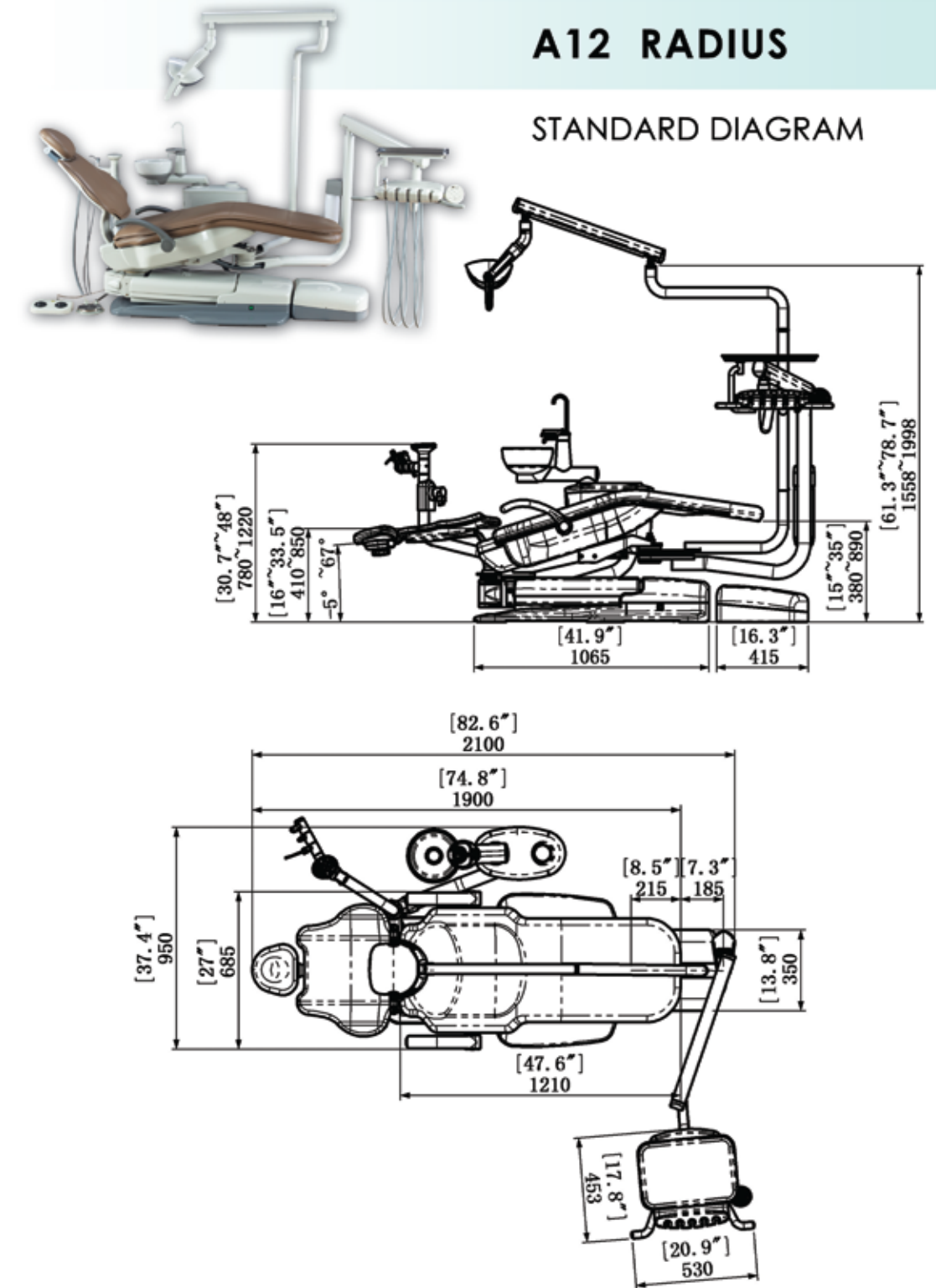
## A6 RADIUS

STANDARD DIAGRAM



## A12 RADIUS

STANDARD DIAGRAM





# STOOLS



## DELUXE DOCTOR STOOL

### Dimensions:

Backrest Vertical Adjustment Range	0~ 4.7"(12cm)
Seat Width	17"(43.18cm)
Seat Height Ranges	20"-25.5"(51-68cm)
5 Leg Base Diameter	24"(61cm)



## DELUXE ASSISTANT STOOL

### Dimensions:

Abdominal Vertical Adjustment Range:	0~3.1"(8cm)
Seat Width	18"(45.7cm)
Seat Height Ranges	22"-27.5"(56-70cm)
5 Leg Base Diameter	24"(61cm)



## SADDLE STOOL

### Dimensions:

Seat Height	21.6" to 29.5" (55-75cm)
Base Diameter	18.9" (48cm)
Seat Depth	14" (35.5cm)
Seat Width	17.1" (45.3cm)



## SADDLE STOOL WITH BACKREST

\*\* AVAILABLE IN BLACK ONLY\*\*

### Dimensions:

Abdominal Vertical Adjustment Range	0~ 3.1"(8cm)
Seat Width	16.1"(41cm)
Seat Height Ranges	24.5"-31.5"(62-80cm)
5 Leg Base Diameter	24"(61cm)



## SPLIT-SADDLE STOOL

\*\* AVAILABLE IN BLACK ONLY\*\*

### Dimensions:

Seat Height	21.6" to 29.5" (55-75cm)
Base Diameter	18.9" (48cm)
Seat Depth	14" (35.5cm)
Seat Width	17.1" (45.3cm)

## SADDLE STOOL COLOR OPTIONS



## UPHOLSTERY STYLES



SEAMLESS



STITCHED

# COLOURS

Standard Plush Seamless and Sewn Upholstery



\*Custom Colours Available for Both Ultraleather and Plush - Upcharge

FLIGHT DENTAL SYETEMS - First Class has Never been so Affordable!



**Flight Dental Systems Canada Head Office**  
**21 Kenview Blvd, Unit 9, Brampton, ON, L6T 5G7, CANADA**  
**Tel: 905-799-0517 Fax: 905-793-2406**

**Flight Dental Systems USA**  
**3103 Farrell Road, Houston, Texas, 77073, USA**  
**Tel: 346-398-4817**

**[www.flightdentalsystems.com](http://www.flightdentalsystems.com)**  
**Toll Free: 1-866-799-0517**