



Phone (800) 981-1540 | Fax (715) 254-0996
 sales@kimobility.com | www.kimobility.com



Company:	Ship To:
Account Number:	Date:
Quote: PO Number:	Address:
ATP:	City: State:
Marked For:	Zip: Phone:
Associated Quote/Order#:	Email/Fax:
	Effective: 1/5/2026

Catalyst 5Vx - Transit Included (K0005)	\$2563
Catalyst 5Vx - Transit Not Included (K0005)	\$2213
300 lb weight capacity	

Power Assist

Twist Drive System (E0986) \$7950
 Includes Multi-Function Toggle Controller, Removable Li-ion Battery - 36V, 4Ah, Twist Carry Bag, and mounting systems. See page 9 for additional, required selections.
 265lb (120 kg) Weight Capacity.

Frame

Seat Width	
<i>21" and 22" not available with Klaxon Twist</i>	
14"	N/C
15"	N/C
16"	N/C
17"	N/C
18"	N/C
19"	N/C
20" (E2201)	\$560
21" (E2201)	\$560
22" (E2201)	\$560

Transit Option	
Transit System (Weight Limit 300lbs) (E1022)	\$350
<i>Not available with 350 lb Weight Capacity</i>	
Omit	N/C

Cross Brace	
Standard Cross Braces	N/C
Seating System Cross Braces	N/C
<i>Allows for easy attachment of seating system mounting hardware. Not available with Seat Sling.</i>	

Seat Depth	
14"	N/C
15"	N/C
16"	N/C
17"	N/C
18"	N/C
19"	N/C
20" (E2203)	\$614

Seat Option	
Removable Aluminum Seat Pan (E2231)	\$312
<i>Pan depth 1/2" shorter than Seat Depth</i>	

Weight Capacity	
300 lbs	N/C
350 lbs (Heavy Duty)	\$588
<i>Requires minimum 5" caster height. Not available with Klaxon Twist.</i>	

Wheelchair Drive Ready	
<i>Chair will ship from Ki Mobility with adaption kit installed for selected Alber system. Order system separately from Alber USA. Select Rear Seat Height (full profile selections only) in drive wheel size on Rear Seat Height chart (page 5). Requires Rear Anti-Tips. Not available with Height Adjustable Flip Back T-Arm.</i>	
e-motion Ready	N/C



Phone (800) 981-1540 | Fax (715) 254-0996
 sales@kimobility.com | www.kimobility.com



Backrest

Back Post / Height Range / Back Height						
Back Post	Price	Height Range	Back Height			
Standard	N/C	Short ^{1,2}	8.5"	9.5"	10.5"	11.5"
		Medium ²	12.5" ³	13.5"	14.5"	15.5"
		Tall	16.5"	17.5"	18.5"	19.5"
Half-Folding ⁴	\$59	Short	12.5"	13.5"	14.5"	15.5"
		Tall	16.5"	17.5"	18.5"	19.5"
Angle Adjustable w/ Push Handle	\$203	Short ²	14"	15"	16"	
		Medium ²	16"	17"	18"	
		Tall	18"	19"	20"	

- 1 Not available with Tension Adjustable Back Upholstery
- 2 Not available with Standard Back Upholstery in combination with 21" and 22" Seat Widths
- 3 Not available with Tension Adjustable Back Upholstery in combination with 22" Seat Width
- 4 Not available with Standard Back Upholstery

Standard Back Post

Select option below only if a Standard Back Post option is selected

Straight with Push Handle	N/C
Straight without Push Handle	N/C
8 Degree Bend with Push Handle	\$35
<i>Not available with Short Back Height Range</i>	
Straight with Fold Down Push Handle	\$134
<i>Not available with 350 lb Weight Capacity</i>	
Caregiver Adjustable Height	\$167
<i>Not available with Swing Away armrests. Available only with straight without push handle backrest.</i>	

Back Upholstery

If selecting both upholstery and Axiom Back, the upholstery will be installed

Standard	N/C
Tension Adjustable with Standard Cover (E2611)	\$359
Tension Adjustable with Air Mesh Breathable Cover (E2611)	\$422
Omit	(\$15)

Push Handle Options

Not available with Straight Back Post with Fold Down Push Handle or 350 lb Weight Capacity

Low Profile Push Handle	\$96
<i>2" shorter than standard push handles</i>	

US Military Service Patches

Attached only if ordered with Tension Adjustable Back Upholstery

Army	Navy	Marines	Air Force	
Coast Guard	US Purple Heart			\$96
Combo Army/Purple Heart		Combo Navy/Purple Heart		
Combo Marines/Purple Heart		Combo Air Force/Purple Heart		
Combo Coast Guard/Purple Heart				\$155

Footrest / Frame Type

Frame Type

Swing Away	N/C
Super Low - Swing Away	N/C
70° Fixed Front	N/C
80° Fixed Front	N/C

Minimum Front Seat Height with Front Mount Hangers						
Hanger Length	Short		Medium		Long	
	70°	80/90°	70°	80/90°	70°	80°
Minimum Front Seat Height with Standard Selection	13.5"	13.5"	14"	15"	16"	17"
Minimum Front Seat Height with 3" Extension	14.5"	16"	16.5"	18"	18.5"	20"

Hanger / Front Frame Bend

Frame	Hanger	60°	70°	80°	90°	Retail
Swing Away	Extension Tube Mount	⁴		¹		N/C
	Front Mount ⁴			¹	¹	N/C
	Elevating Leg Rests ^{2,3}					\$307
	Pro Elevating Leg Rests E0990 ^{2,3}					\$354
	Omit Hangers					(\$20)
Fixed	Extension Tube Mount			¹		N/C

- 1 Not available with 7" or 8" casters
- 2 Available only with Classic Hanger Release
- 3 Not available in combination with 24" wheels and Push to Lock Flush Mount Wheel Locks
- 4 Not available with Klaxon Twist

ELR Pad and Pro ELR Cover

Standard ELR Foam Knee Pad (Pair) K0108	\$386
<i>Available only on ELR</i>	
Pro ELR Gel Pad Cover (Pair) K0108	\$468
<i>Available only on Pro ELR</i>	

Footrest / Extension / Seat to Footrest Length

Select Extension and Seat to Footrest Length in row corresponding to desired Footrest. Footrest Length of at least 2.5" shorter than Front Seat Height recommended. Extension Tube Hangers and Fixed Front Frame measurements are based on 70° Hanger / Front Frame Bend.

Footrest	Extension	Seat to Footrest Length												
Extension Tube Hangers (60°,70°,80°)	Short ³	11"	11.5"	12"	12.5"	13"	13.5"	14"	14.5"	15"				
	Medium	13"	13.5"	14"	14.5"	15"	15.5"	16"	16.5"	17"				
	Long	15.5"	16"	16.5"	17"	17.5"	18"	18.5"	19"	19.5"				
Front Mount ^{1,3} Hangers	Standard Selections										Requires 3" Extension			
	Short Front Mount Hanger (70°, 80°, 90°)	4" ²	4.5" ²	5"	5.5"	6"	6.5"					10"	10.5"	11"
		7"	7.5"	8"	8.5"	9"	9.5"					11.5"	12"	12.5"
	Medium Front Mount Hanger (70°, 80°, 90°)	4" ²	4.5" ²	5"	5.5"	6"	6.5"	7"	7.5"			12"	12.5"	13"
		8"	8.5"	9"	9.5"	10"	10.5"	11"	11.5"			13.5"	14"	14.5"
	Long Front Mount Hanger (70°, 80°)	5"	5.5"	6"	6.5"	7"	7.5"	8"	8.5"	9"		14"	14.5"	15"
9.5"		10"	10.5"	11"	11.5"	12"	12.5"	13"	13.5"		15.5"	16"	16.5"	
ELR ³	Standard ELR Extension Tube Short (11.75" - 16.75")													
	Standard ELR Extension Tube Medium (13.75" - 18.75")													
	Standard ELR Extension Tube Long (16.25" - 21.25")													
Pro ELR Low Pivot ³ Setting	Pro ELR Low Pivot Setting Short (12" - 18")													
	Pro ELR Low Pivot Setting Long (14.5" - 21.5")													
Pro ELR High Pivot ³ Setting	Pro ELR High Pivot Setting Short (10.5" - 16")													
	Pro ELR High Pivot Setting Long (13" - 19.5")													
Fixed Front Frame (70°,80°)	Short ³	11.5"	12"	12.5"	13"	13.5"	14"	14.5"	15"					
	Medium	13"	13.5"	14"	14.5"	15"	15.5"	16"	16.5"	17"				
	Long	15.5"	16"	16.5"	17"	17.5"	18"	18.5"	19"	19.5"				

¹ See Minimum Front Seat Height chart above

² Available with 90° only

³ Not available with Klaxon Twist

3" Extension

Available only with Front Mount Hangers

3" Extension	\$38
3" Extension (Provided as Parts)	\$38

Hanger Release

If no selection is made Classic Hanger Release will be used

Classic	N/C
4-Way - In-Line	N/C
4-Way - Out	N/C

Footplates

Composite	N/C
Not available with Front Mount Hanger	
Composite Angle Adjustable (K0040)	\$208
Not available with Front Mount Hanger or Seat Widths less than 16"	
Aluminum Angle Adjustable (K0040)	\$214
One Piece Flip Up Angle Adjustable (K0040)	\$208
Not available with Front Mount Hanger, ELR, Pro ELR, or Klaxon Twist	

Heel Loops

Not available with One Piece Flip Up Angle Adjustable Footplate

Heel Loops (E0951)	\$44
Adjustable Heel Loops (E0951)	\$54
Omit Heel Loops	N/C

Calf Straps

Velcro Adjustable (K0038)	\$43
Padded Velcro Adjustable (K0038)	\$75
Padded Airmesh Calf Strap (K0038)	\$134

Residual Limb Support

	Limb Support	Price	Omit	Cover		Pad Size				
Left	Left Limb Support (E1020)	\$449	Omit Left Hanger	Smooth Cover Left	Air Mesh Cover Left	5X8 Pad Left Side	7X10 Pad Left Side	9x10 Pad Left Side	9x14 Pad Left Side	11x10 Pad Left Side
Right	Right Limb Support (E1020)	\$449	Omit Right Hanger	Smooth Cover Right	Air Mesh Cover Right	5X8 Pad Right Side	7X10 Pad Right Side	9x10 Pad Right Side	9x14 Pad Right Side	11x10 Pad Right Side



Phone (800) 981-1540 | Fax (715) 254-0996
 sales@kimobility.com | www.kimobility.com



Front Seat Height and Casters

Front Seat Height

Select Front Seat Height in row corresponding to desired caster size

Caster Size	Front Seat Height													
	Uses Super Low Front Frame													
4"	13.5"	14"	14.5"	15"	15.5"	16"	16.5"	17"	17.5"	18"	18.5"	19"	19.5"	20"
5"	14.5"	15"	15.5"	16"	16.5"	17"	17.5"	18"	18.5"	19"	19.5"	20"	20.5"	
6"	15.5"	16"	16.5"	17"	17.5"	18"	18.5"	19"	19.5"	20"	20.5"	21"		
7"	17"	17.5"		18"	18.5"	19"	19.5"	20"	20.5"	21"				
8"	17.5"	18"	18.5"	19"	19.5"	20"	20.5"	21"						

Castors

Caster Type	Caster Size	Price	Caster Size				
			4"	5"	6"	7"	8"
.75" Rollerblade		N/C					
.75" Lighted Rollerblade		\$81					
1.25" Soft Roll		N/C					
1" Poly Aluminum		\$176					
1" Pneumatic		\$96					
1.5" Soft Roll		\$63					
1.5" Soft Roll Aluminum		\$221					
2" Poly		\$101					
2" Pneumatic w/Foam Insert		\$256					

Maximum Seat Dump Reference

(Front Seat Height minus Rear Seat Height)

Seat Depth	14"	15"	16"	17"	18"	19"	20"
Maximum Dump Standard Caster Housing	1.5"	2"	2"	2"	2.5"	2.5"	2.5"
Maximum Dump Performance Caster Housing	3"	3"	3"	3.5"	3.5"	4"	4"

Depending on configuration, chairs with Fixed Front Frame Type may achieve up to an additional .75"

Forks / Stems

Best Fit	N/C
<i>Ki Mobility will pick Fork and Stem combination to optimize performance based on Caster Size and Front Seat Height</i>	
Standard Fork Stem	N/C
3/4" Longer Fork Stem	N/C
1 1/2" Longer Fork Stem	N/C
Frog Legs Suspension Fork	\$508
<i>Available only with 4", 5" or 6" Caster Sizes. Not available with Caster Pin Locks, 350 lb Weight Capacity, 2" Poly caster or 2" Pneumatic w/ Foam Insert caster.</i>	
Frog Legs II Suspension System	\$508
<i>Available only with 4", 5" or 6" Caster Sizes. Not available with Caster Pin Locks, 350 lb Weight Capacity, 2" Poly caster or 2" Pneumatic w/ Foam Insert caster.</i>	

Caster Housing

Standard Housing	N/C
Performance Housing	\$54
<i>Not available with 350 lb Weight Capacity</i>	

Fork / Stem Options

Frog Legs Options

User Weight Under 80 lbs	N/C
User Weight 80-120 lbs	N/C
User Weight 120-160 lbs	N/C
User Weight 160-220 lbs	N/C
User Weight 220-260 lbs	N/C
User Weight 260-300 lbs	N/C

Caster Pin Locks

Caster Pin Locks (K0073)	\$219
<i>Not available with Performance Caster Housing, 1 1/2" Longer Fork Stem or Frog Legs Fork</i>	



Phone (800) 981-1540 | Fax (715) 254-0996
 sales@kimobility.com | www.kimobility.com



Wheel Locks

Wheel Lock	Wheel Lock Options
Push to Lock	N/C
Push to Lock Flush Mount	N/C
Pull to Lock	N/C
Low Profile Scissor Lock	\$75
<i>Not available with low poly or full poly tires</i>	
Drum Brake (E2228)	\$619
<i>Available only with 20", 22" and 24" MAXX Spoke wheels. Not available with Straight without Push Handle or Straight with Fold Down Push Handle Back Posts, or Low Profile Push Handle. Axle is Quick Release.</i>	
Dual - Drum Brake with Push to Lock (E2228)	\$731
<i>Available only with 20", 22" and 24" MAXX Spoke wheels. Not available with Straight without Push Handle or Straight with Fold Down Push Handle Back Posts, or Low Profile Push Handle. Axle is Quick Release.</i>	
Dual - Drum Brake with Pull to Lock (E2228)	\$731
<i>Available only with 20", 22" and 24" MAXX Spoke wheels. Not available with Straight without Push Handle or Straight with Fold Down Push Handle Back Posts, or Low Profile Push Handle. Axle is Quick Release.</i>	
Omit	N/C
Extension Handles (E0961)	\$85
<i>Available only with Push to Lock or Pull to Lock Wheel Locks</i>	
Grade Aids (E0974)	\$166
<i>Available only with Push to Lock Wheel Locks and Pneumatic or Pneumatic with Airless Insert tires</i>	
Automatic Braking System (E2228)	\$2060
<i>PRATIKO Automatic Braking System. Installed by Ki. Wheel Lock selection required - If no selection, Push to Lock will be provided. Weight capacity of 250 lbs (113 kg). Not available with transit, drum brake, seat pan, Heavy Duty, Klaxon Twist, or seat widths wider than 21". Available with the following rear wheels: 24" Spoke, Maxx Spoke and Mag. 22" is Mag only.</i>	

Rear Seat Height and Wheels

Rear Seat Height

Select Rear Seat Height in row corresponding to desired Wheel Size and Tire Profile. 14" Seat Depth not available with 24", 25" or 26" wheel sizes.

Wheel Size	Tire Profile	Rear Seat Height					
		11.5"	12.5"	13.5"	14.5"	15.5"	16.5"
20" ¹	Low	11.5"	12.5"	13.5"	14.5"	15.5"	16.5"
	Full	12"	13"	14"	15"	16"	17"
22" ²	Low	12.5"	13.5"	14.5"	15.5"	16.5"	17.5"
	Full	13"	14"	15"	16"	17"	18"
24" ³	Low	13.5"	14.5"	15.5"	16.5"	17.5"	18.5"
	Full	14"	15"	16"	17"	18"	19"
25" ⁴	Low	14"	15"	16"	17"	18"	19"
26" ⁵	Low	14.5"	15.5"	16.5"	17.5"	18.5"	19.5"
	Full	15"	16"	17"	18"	19"	20"

¹ Not available with Klaxon Twist

² Lowest Rear Seat Height with Klaxon Twist and 22" wheels is 15" with Low Profile tires and 15.5" with Full Profile tires

³ Lowest Rear Seat Height with Klaxon Twist and 24" wheels is 16" and 16.5" with Mountain tire

⁴ Lowest Rear Seat Height with Klaxon Twist and 25" wheels is 16" and 17" with Mountain tire

⁵ Lowest Rear Seat Height with Klaxon Twist and 26" wheels is 17"

Wheels

		Rear Wheel Size					
		Price	20"	22"	24"	25"	26"
Rear Wheel Type	Spoke	N/C					
	Mag	N/C					
	Maxx Spoke	\$65					
	Maxx Spoke	\$224					
	Superlight Spoke ¹	\$326				2	
	Spinergy Spox	\$1014					

1 Not available with 350 lb Weight Capacity

2 Available only with Superlight and Plastic Coated Handrims

Rear Tire Type

Full Profile

Street Pneumatic 1 3/8" (E2211, E2212)	N/C
<i>Not available on 25" wheel size</i>	
Full Poly 1 3/8" (E2218)	N/C
<i>Not available on Superlight wheel or 25" or 26" wheel sizes</i>	
Pneumatic with Airless Insert 1 3/8" (E2211, E2213)	\$108
<i>Not available on Superlight wheel or 25" or 26" wheel sizes</i>	
Schwalbe HS-127 1 3/8" (E2211, E2212)	\$139
<i>Available only on 24" wheel size</i>	
Schwalbe Downtown 1 3/8" (E2211, E2212)	\$108

Low Profile

Low Poly 1" (E2218)	\$59
<i>Not available on Superlight wheel, 25" or 26" wheel sizes or 350 lb Weight Capacity</i>	
Sentinel Solid Tire 1" (E2218)	\$108
<i>Not available on Superlight wheel</i>	
High Pressure 1" (E2211, E2212)	\$108
<i>Not available on Mag wheel</i>	
Schwalbe Marathon Plus Evolution 1" (E2211, E2212)	\$150
<i>Not available on Mag wheel, 20" or 22" wheel sizes</i>	
Shox Solid Tire 1" (E2218)	\$108

Axles

Axles

No selection needed with Drum Brake

Quick Release	N/C
Quad Quick Release	\$193
<i>Not available with Mag or Spinergy wheels</i>	

Rear Wheel Camber

Combination of Standard and Adjustable Camber cannot exceed 4°. Selection will default to a max of 4° combined if exceeded. Combination of Standard and Adjustable Camber above 2° not available with Klaxon Twist.

Standard Camber

Chair will be set up with this camber selection

0° - Standard Camber	1° - Standard Camber	2° - Standard Camber	
3° - Standard Camber	4° - Standard Camber		N/C

Adjustable Camber

Extra camber spacers mounted to the inside of the rear frame for later use

0° - Adjustable Camber	1° - Adjustable Camber	
2° - Adjustable Camber	3° - Adjustable Camber	
4° - Adjustable Camber		N/C

Handrims

Standard Handrims

Aluminum Anodized	N/C
Superlight Aluminum Anodized	\$59
<i>Available only on 24" and 25" wheel sizes. Available only on MAXX Spoke or Superlight wheels.</i>	
Plastic Coated	\$115
Projection (8 Vertical Projections)	\$374
<i>Available only with full profile tires in combination with 22", 24", and 26" MAXX Spoke wheels, or 22" and 24" Mag wheels</i>	
Omit Handrim	N/C

Ergonomic Handrims

Not available with 20" or 26" wheels

Lite Regular Grip	\$497
Standard Regular Grip	\$475
Lite Extra Grip	\$550
Standard Extra Grip	\$528
Lite Omit Grip	\$422
Standard Omit Grip	\$369

Handrim Options

Handrim Mount

Close Mount	\$33
<i>Chair will come with Standard Mount unless Close Mount is selected. Reduces overall width by .75".</i>	
3M Micro Grip	\$75

Spinergy Options

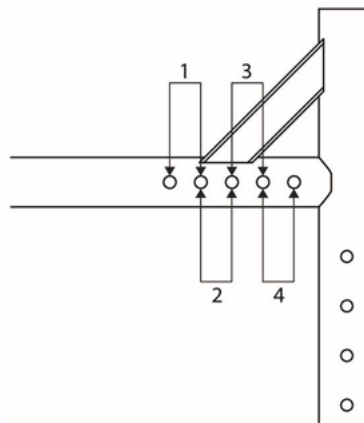
Select spoke color for Spinergy Wheels

Black Spokes	Red Spokes	Blue Spokes	White Spokes	N/C
--------------	------------	-------------	--------------	-----

Center of Gravity Preset

If no selection is made position 3 will be used

Position 1	Position 2	Position 3	Position 4	N/C
------------	------------	------------	------------	-----



Armrests

Armrest Type	Length	Price
Height Adjustable T-Arm Tall (11.5"-15") E0973	Desk	\$337
	Full	
Height Adjustable T-Arm (8.5"-13.5") E0973	Desk	\$337
	Full	
Height Adjustable T-Arm Low (6.5"-10.5") E0973 ¹	Desk	\$337
	Full	
Height Adjustable Flip Back T-Arm Tall (11.5"-15") K0020	Desk	\$352
	Full	
Height Adjustable Flip Back T-Arm (9.5"-13.5") K0020	Desk	\$352
	Full	

¹ Available only with Spinergy, Mag and MAXX Spoke Wheels. If requested configuration is unavailable, Standard Height T-Arm will be used.

² Not available with Seat Depths less than 16" or Angle Adjustable Back Posts

³ Not available with Angle Adjustable Back Posts, Arm Pads, or Half-Folding Back

⁴ Not available with 24" wheels and 15" or less Rear Seat Height. Not available with 22" Wheels and 14" or less Rear Seat Height.

Armrest Type	Length	Price
Flip Back (10.5") ^{2,4}	Desk	\$94
	Full	
Swing Away (10.5"-12.5") E0973 ³		\$251
Swing Away with Side Guard (10.5" - 12.5") E0973 ³		\$374
Omit Armrests		N/C

Arm Pads

Waterfall Arm Pad	\$28
<i>Available only with Height Adjustable T-Arm Tall, Height Adjustable T-Arm, and Height Adjustable T-Arm Low</i>	

Accessories

Removable Side Guard

Not available with T-Arms, Flip Back or Swing Away with Side Guard Armrests

Composite Side Guards (K0108)	\$166
Aluminum Straight - Black Matte (K0108)	\$219
Aluminum Straight - Match Frame Color (K0108)	\$272
<i>Not available with Hydrographics</i>	
Fixed Mount Fender Side Guards - Aluminum (K0108)	\$166
<i>Not available with 24" wheel size in combination with 14" Rear Seat Height. Not available with standard back post in 8.5", 12.5", or 16.5" back heights.</i>	
Fixed Mount Fender Side Guards - Carbon Fiber (K0108)	\$528
<i>Not available with 24" wheel size in combination with 14" Rear Seat Height. Not available with standard back post in 8.5", 12.5", or 16.5" back heights.</i>	
Aluminum Adjustable Fender w/Foam Pad - Black Matte (K0108)	\$304
Aluminum Adjustable Fender w/Foam Pad - Match Frame Color (K0108)	\$357
<i>Not available with Hydrographics</i>	
Carbon Fiber Adjustable Fender (K0108)	\$540

Anti-Tip

Rear Anti-Tips (E0971)	\$167
Swing-In Anti-Tip Single - Left (E0971)	\$171
<i>Not available with 350 lb Weight Capacity. Not available with left side O2 Holder.</i>	
Swing-In Anti-Tip Single - Right (E0971)	\$171
<i>Not available with 350 lb Weight Capacity. Not available with right side O2 Holder.</i>	
Swing-In Anti-Tip Pair (E0971)	\$342
<i>Not available with 350 lb Weight Capacity. Not available with O2 Holder.</i>	
Omit	N/C

Upper Extremity Support Tray

^{3/8"} Polycarbonate with ABS ribs. Hardware ordered separately. BC = Body Cut Out. Armrest assembly is required for tray mounting.

Tray	Fits Chair	Retail
Tray, Small 22" x 20" (BC 13" x 8") (E0950)	10" - 14"	\$235
Tray, Medium 24" x 22" (BC 15" x 9") (E0950)	12" - 16"	\$235
Tray, Large 26" x 24" (BC 17" x 10") (E0950)	14" - 18"	\$235
Tray, X-Large 28" x 26" (BC 18" x 10") (E0950)	16" - 20"	\$255
Tray Hardware Assy, Knob Release - Pair		\$222

Pelvic Positioning Belt

1 1/2" Auto Buckle Pelvic Positioning Belt (E0978)	\$91
1 1/2" Padded Auto Buckle Pelvic Positioning Belt (E0978)	\$183
2" Airline Buckle Pelvic Positioning Belt (E0978)	\$120
Small Flex-Mount Positioning Belt (16-24") (E0978)	\$208
Medium Flex-Mount Positioning Belt (19-29") (E0978)	\$208
Large Flex-Mount Positioning Belt (25-37") (E0978)	\$208
Belt Mounting Band Clamp	\$37
<i>Clamp includes hardware to mount Belt</i>	

Other Accessories

Tool Kit	\$63
Removable Underseat Pouch	\$64
Pediatric Ki Mobility Backpack	\$74
Ki Mobility Backpack	\$83
Luggage Carrier	\$90
<i>Not available with ELR, Pro ELR, or Residual Limb Support</i>	
Black Neoprene Impact Guards	\$99
Clear Spoke Guards (K0065)	\$125
<i>Not available with Mag wheel</i>	
Black Spoke Guards (K0065)	\$128
<i>Not available with 20" wheel size or Mag wheel</i>	
Cane and Crutch Holder	\$214
IV Pole	\$303
<i>Available only with Standard Straight Back Posts</i>	
Tipping Lever - Left Side	\$153
<i>Not available with Transit Wheels or 350 lb Weight Capacity</i>	
Tipping Lever - Right Side	\$153
<i>Not available with Transit Wheels or 350 lb Weight Capacity</i>	
O2 Holder - Left Side (E2208)	\$325
O2 Holder - Right Side (E2208)	\$325
Transit Wheels (K0108)	\$161
<i>Not available with Step Tube, Rear Seat Heights less than 14.5" or 350 lb Weight Capacity</i>	

Color

Touch-up paint available for purchase in the parts manual

Options	Price	Colors																				
		Gloss													Matte							
		Black	Ruby Red	Radiant Orange	Yellow	Electric Green	Rich Teal	Glacier Blue	Blue Steel	Deep Sapphire Blue	Purple Plum	Opalescent Violet	Dark Pink	Light Pink	Champagne	Shadow Black	Iridescent Navy	Bright Red	Tactical Green	Dry Earth Tan	Platinum	White
Frame	N/C																					
Color Accent Package ¹	N/C																					
Color Anodizing Package ²	Black	Blue	BrightGreen	Orange	Pewter	Pink	Purple	Red	Gold													
	N/C	\$255	\$255	\$255	\$255	\$255	\$255	\$255	\$255													

¹ Includes axle plates and forks. When Frog Legs Suspension Fork or Frog Legs II Suspension System is selected, only axle plate will be painted.

² Select desired color. If no selection is made, black will be used. Includes standard caster housing, caster fork, and axle plates. Not available with 2" wide casters, Frog Legs Suspension Fork or Frog Legs II Suspension System. Extended lead-time may apply.

Hydrographics Options

Not available with Frame Color. Hydrographics Base Color required with Hydrographics. Zebra not available with Black.

Options	Price	Hydrographics					Hydrographics Base Color						
		AOR1 (Desert Digital Camo)	NEXT Camo	Pink Camo	Carbon Fiber	Muddy Girl	Zebra	Black	Blue	Granny Smith	Pink	Purple	Red
Frame	\$859												
Base Color	N/C												



Phone (800) 981-1540 | Fax (715) 254-0996
 sales@kimobility.com | www.kimobility.com



Power Assist

The following options are specific to the Twist Power Assist Add-On option

Controller Mounting Position

If no selection is made Right Side Position will be used

Left Side _____ N/C
 Right Side _____ N/C

Folding Hardware Option

Required selection for folding chair installation

Folding Hardware Option _____ \$295

Additional Accessories

Attendant Controller (K0108) _____ \$315
 Handlebar Controller (K0108) _____ \$495
 Twist Carry Bag _____ \$195
 Handlebar and Front Mount Connector Carry Bag _____ \$195

Removable Li-ion Battery - 36V, 4Ah _____ \$595

Installation Options

Install Both Front and Rear Hardware _____ N/C
 Install Front Hardware Only _____ N/C
 Install Rear Hardware Only _____ N/C
 Not Installed _____ N/C

Setup Options

For Custom Settings complete the chart(s) below. Selection made indicates maximum performance level. Selection should be made according to client capabilities, use environment, etc. Setting can be changed in Klaxon app. If no selection is made Twist will be set to defaults presented below.

Default Settings _____ N/C
 Custom Settings _____ N/C

Acceleration Rate											
Defines how quickly the Twist accelerates or decelerates in Variable Speed Mode. Lower values are ideal for indoor or tight spaces. Higher values offer faster acceleration, better suited for outdoor use.											
Applicable Modes: Front and Rear											
Default: 2											
0	1	2	3	4	5	6	7	8	9	10	
Maximum Speed											
Sets the top speed limit for the Twist in Variable Speed Mode. If front-mounted, a safe speed limit is set at 4 mph. Rear-mounted increases it to 6 mph.											
Applicable Modes: Front and Rear											
Default: 6 mph											
	1	2	3	4	5	6					
Manual Rim Braking - Force Required											
Adjusts the force required to manually brake using the wheelchair's rims. Lower values mean less force is needed to initiate braking, but may result in false detections over bumps or gaps. Higher values require more force to trigger braking.											
Applicable Modes: Front and Rear											
Default: 5											
0	1	2	3	4	5	6	7	8	9	10	
Turning Speed Reduction											
Adjusts how much the Twist reduces speed when steering.											
Applicable Modes: Front											
Default: 0											
0	1	2	3	4	5	6	7	8	9	10	
Adaptive Drive Control											
Adjusts how the Twist dynamically responds to user weight, input and terrain. Lower values improve control; higher provide more power.											
Applicable Modes: Front and Rear											
Default: 1											
	1	2	3	4	5	6	7	8	9	10	

Additional custom settings are available in KIO and on the Twist Order form, located at www.kimobility.com.

Catalyst Front Seat Height Matrix																					
4" Caster				5" Caster				6" Caster				7" Caster				8" Caster					
FSH	Super Low	Stem	Fork	FSH	Super Low	Stem	Fork	FSH	Super Low	Stem	Fork	FSH	Super Low	Stem	Fork	FSH	Super Low	Stem	Fork		
15	13.5	Std	4"	16	14.5	Std	4"	17	15.5	Std	5"	18	16.5	Std	6"	19	17.5	Std	6"		
15.5	14			16.5	15.5	3/4		17.5	16.5	3/4		18.5	17			19.5	18.5	3/4			
15.5 ¹	14 ¹	3/4		17.5	16	1 1/2		18.5	17	1 1/2		18.5	17.5	3/4		20.5	n/a	1 1/2			
16	14.5			16	14.5	Std	17	15.5	Std	19	18	1 1/2	19			17.5	Std				
16.5 ¹	15 ¹	1 1/2		16.5	15		17.5	16		18	16.5		19.5	18		20		18.5			
17	15.5			17.5	15.5	3/4	5"	18	16.5	Std	20	18.5	1 1/2	20		18.5		Std			
15.5	14	Std	17	16	17.5			16.5	3/4		18.5	17		Std	20.5	19	Std				
16	14.5		16	14.5	1 1/2	18		17		18.5	17.5	Std	19.5		18	3/4			19.5	18.5	7"
16	15	3/4	18	16.5		1 1/2	18.5	17.5	1 1/2	20	18.5		3/4	20	19			3/4	20.5	n/a	
16.5	15.5		16.5	15	17		15.5	Std		19	17.5	19		18	19.5	18.5	21		n/a		
17	15.5	1 1/2	17.5	16	Std	19	17.5	1 1/2	19.5	18	3/4	20	19	1 1/2	21	n/a					
17.5	16		17.5	16		18	16.5		3/4	6"		18.5	17		Std	20.5	n/a	1 1/2	20	18.5	1 1/2
16.5	15	Std	6"	17.5	16	3/4	6"	18	16.5	Std	7"	20	19	3/4		7"	20.5		n/a	1 1/2	
17	15.5			17	15.5			18.5	17			18.5	17		19		17.5	20	18.5		20.5
17	16	3/4		18	16.5	1 1/2		18.5	17	19		17.5	3/4	20	18.5		1 1/2	20.5	19	1 1/2	
17.5	16.5			17.5	16.5		18.5	17	19	17.5		19.5		18	20.5			19	21		n/a
18	16.5	1 1/2		18.5	17	1 1/2	18.5	17.5	3/4	19		18	3/4	20	18.5		1 1/2	20.5	19	1 1/2	
18.5	17			18.5	17		19	17.5		19.5		18		20	19			21	n/a		
18	16.5	Std	7"	18	16.5	Std	7"	19.5	18.5	1 1/2	7"	20	19	1 1/2	7"	20.5	19	1 1/2	7"		
18.5	17			18.5	17			19	17.5			19.5	18			20	18.5			20.5	19
18.5	17.5	3/4		18.5	17.5	3/4		19	17.5	19.5		18	1 1/2	20		18.5	1 1/2	20.5		19	1 1/2
19	18			18.5	17.5		19	18	20	18.5		20.5		19		21		n/a			
19.5	18.5	1 1/2		19	18	3/4	20.5	19	1 1/2	20.5		19	1 1/2	20.5		19	1 1/2	20.5		19	1 1/2
20	19			19.5	18.5		21	n/a													
				19.5	18	1 1/2	6" x 2" caster not available with 5" fork														
				20	18.5		20.5	19													
				20.5	19																

¹ Not available with 4 x 1.5" Soft Roll Aluminum

Seat heights with "FSH" heading available with Standard Front Frame. Seat heights with "Super Low" heading available with Super Low Front Frame. Actual seat height may vary depending upon configuration.



Phone (800) 981-1540 | Fax (715) 254-0996
 sales@kimobility.com | www.kimobility.com



Axiom One - General Use Cushion with Incontinence Resistant Cover

Weight Capacity: 350 lbs

		Width							
		14"	15"	16"	17"	18"	19"	20"	22"
	Retail	\$109		\$109	\$109	\$109		\$109	\$228
	HCPC	E2601	E2601	E2601	E2601	E2601	E2601	E2601	E2602
Depth	14"	XO1414							
	15"								
	16"	XO1416		XO1616	XO1716	XO1816			
	17"				XO1717				
	18"			XO1618	XO1718	XO1818		XO2018	XO2218
	19"								
	20"					XO1820		XO2020	XO2220
	22"								

Axiom G - General Use Cushion

Weight Capacity: 350 lbs

		Width							
		14"	15"	16"	17"	18"	19"	20"	22"
	Retail	\$144	\$144	\$144	\$144	\$144	\$144	\$144	\$239
	HCPC	E2601	E2601	E2601	E2601	E2601	E2601	E2601	E2602
Depth	14"	XG1414							
	15"	XG1415	XG1515	XG1615					
	16"	XG1416	XG1516	XG1616	XG1716	XG1816	XG1916	XG2016	
	17"	XG1417	XG1517	XG1617	XG1717	XG1817	XG1917	XG2017	
	18"	XG1418	XG1518	XG1618	XG1718	XG1818	XG1918	XG2018	XG2218
	19"		XG1519	XG1619	XG1719	XG1819	XG1919	XG2019	XG2219
	20"		XG1520	XG1620	XG1720	XG1820	XG1920	XG2020	XG2220
	22"			XG1622		XG1822	XG1922	XG2022	XG2222

HCPCS Codes provided are based on code verification by the PDAC or our interpretation of the code definitions.

Proper use of HCPCS Codes does not ensure coverage or payment. For coverage information, verify the appropriate payer's coverage policy.

DCN0236.13 Pricing and specifications subject to change without notice.



Phone (800) 981-1540 | Fax (715) 254-0996
 sales@kimobility.com | www.kimobility.com



Axiom G - General Use Cushion with Extra Outer Cover

Weight Capacity: 350 lbs

		Width							
		14"	15"	16"	17"	18"	19"	20"	22"
Retail		\$234	\$234	\$234	\$234	\$234	\$234	\$234	\$328
HCPC		E2601	E2601	E2601	E2601	E2601	E2601	E2601	E2602
Depth	14"	XG1414C2							
	15"	XG1415C2	XG1515C2	XG1615C2					
	16"	XG1416C2	XG1516C2	XG1616C2	XG1716C2	XG1816C2	XG1916C2	XG2016C2	
	17"	XG1417C2	XG1517C2	XG1617C2	XG1717C2	XG1817C2	XG1917C2	XG2017C2	
	18"	XG1418C2	XG1518C2	XG1618C2	XG1718C2	XG1818C2	XG1918C2	XG2018C2	XG2218C2
	19"		XG1519C2	XG1619C2	XG1719C2	XG1819C2	XG1919C2	XG2019C2	XG2219C2
	20"		XG1520C2	XG1620C2	XG1720C2	XG1820C2	XG1920C2	XG2020C2	XG2220C2
	22"			XG1622C2		XG1822C2	XG1922C2	XG2022C2	XG2222C2

Axiom Air LTE - General Use Air Cushion

Weight Capacity: 300 lbs

		Width			
		16"		18"	
		Cushion w/ Standard Cover	Cushion w/ Extra Standard Cover	Cushion w/ Standard Cover	Cushion w/ Extra Standard Cover
Retail		\$163	\$249	\$163	\$249
HCPC		E2601	E2601	E2601	E2601
Depth	16"	XLTE1616	XLTE1616C2	XLTE1816	XLTE1816C2
	18"	XLTE1618	XLTE1618C2	XLTE1818	XLTE1818C2

Axiom S - Skin Protection Cushion

Weight Capacity: 350 lbs

		Width							
		14"	15"	16"	17"	18"	19"	20"	22"
Retail		\$245	\$245	\$245	\$245	\$245	\$245	\$245	\$367
HCPC		E2603	E2603	E2603	E2603	E2603	E2603	E2603	E2604
Depth	14"	XS1414							
	15"	XS1415	XS1515	XS1615					
	16"	XS1416	XS1516	XS1616	XS1716	XS1816	XS1916	XS2016	
	17"	XS1417	XS1517	XS1617	XS1717	XS1817	XS1917	XS2017	
	18"	XS1418	XS1518	XS1618	XS1718	XS1818	XS1918	XS2018	XS2218
	19"		XS1519	XS1619	XS1719	XS1819	XS1919	XS2019	XS2219
	20"		XS1520	XS1620	XS1720	XS1820	XS1920	XS2020	XS2220
	22"			XS1622		XS1822	XS1922	XS2022	XS2222



Phone (800) 981-1540 | Fax (715) 254-0996
 sales@kimobility.com | www.kimobility.com



Axiom S - Skin Protection with Extra Outer Cover

Weight Capacity: 350 lbs

		Width							
		14"	15"	16"	17"	18"	19"	20"	22"
	Retail	\$347	\$347	\$347	\$347	\$347	\$347	\$347	\$468
	HCPC	E2603	E2603	E2603	E2603	E2603	E2603	E2603	E2604
Depth	14"	XS1414C2							
	15"	XS1415C2	XS1515C2	XS1615C2					
	16"	XS1416C2	XS1516C2	XS1616C2	XS1716C2	XS1816C2	XS1916C2	XS2016C2	
	17"	XS1417C2	XS1517C2	XS1617C2	XS1717C2	XS1817C2	XS1917C2	XS2017C2	
	18"	XS1418C2	XS1518C2	XS1618C2	XS1718C2	XS1818C2	XS1918C2	XS2018C2	XS2218C2
	19"		XS1519C2	XS1619C2	XS1719C2	XS1819C2	XS1919C2	XS2019C2	XS2219C2
	20"		XS1520C2	XS1620C2	XS1720C2	XS1820C2	XS1920C2	XS2020C2	XS2220C2
	21"			XS1621C2		XS1821C2	XS1921C2	XS2021C2	XS2221C2
22"			XS1622C2		XS1822C2	XS1922C2	XS2022C2	XS2222C2	

Axiom P - Positioning Cushion

Weight Capacity: 350 lbs

		Width							
		14"	15"	16"	17"	18"	19"	20"	22"
	Retail	\$424	\$424	\$424	\$424	\$424	\$424	\$424	\$550
	HCPC	E2605	E2605	E2605	E2605	E2605	E2605	E2605	E2606
Depth	14"	XP1414							
	15"	XP1415	XP1515	XP1615					
	16"	XP1416	XP1516	XP1616	XP1716	XP1816	XP1916	XP2016	
	17"	XP1417	XP1517	XP1617	XP1717	XP1817	XP1917	XP2017	
	18"	XP1418	XP1518	XP1618	XP1718	XP1818	XP1918	XP2018	XP2218
	19"		XP1519	XP1619	XP1719	XP1819	XP1919	XP2019	XP2219
	20"		XP1520	XP1620	XP1720	XP1820	XP1920	XP2020	XP2220
	21"			XP1621		XP1821	XP1921	XP2021	XP2221
22"			XP1622		XP1822	XP1922	XP2022	XP2222	

Axiom P - Positioning Cushion with Extra Outer Cover

Weight Capacity: 350 lbs

		Width							
		14"	15"	16"	17"	18"	19"	20"	22"
	Retail	\$539	\$539	\$539	\$539	\$539	\$539	\$539	\$664
	HCPC	E2605	E2605	E2605	E2605	E2605	E2605	E2605	E2606
Depth	14"	XP1414C2							
	15"	XP1415C2	XP1515C2	XP1615C2					
	16"	XP1416C2	XP1516C2	XP1616C2	XP1716C2	XP1816C2	XP1916C2	XP2016C2	
	17"	XP1417C2	XP1517C2	XP1617C2	XP1717C2	XP1817C2	XP1917C2	XP2017C2	
	18"	XP1418C2	XP1518C2	XP1618C2	XP1718C2	XP1818C2	XP1918C2	XP2018C2	XP2218C2
	19"		XP1519C2	XP1619C2	XP1719C2	XP1819C2	XP1919C2	XP2019C2	XP2219C2
	20"		XP1520C2	XP1620C2	XP1720C2	XP1820C2	XP1920C2	XP2020C2	XP2220C2
	21"			XP1621C2		XP1821C2	XP1921C2	XP2021C2	XP2221C2
22"			XP1622C2		XP1822C2	XP1922C2	XP2022C2	XP2222C2	



Phone (800) 981-1540 | Fax (715) 254-0996
 sales@kimobility.com | www.kimobility.com



Axiom SP Visco - Skin Protection & Positioning Cushion

Weight Capacity: 350 lbs

		Width								
		14"	15"	16"	17"	18"	19"	20"	21"	22"
Retail		\$513	\$513	\$513	\$513	\$513	\$513	\$513	\$628	\$628
HCPC		E2607	E2607	E2607	E2607	E2607	E2607	E2607	E2608	E2608
Depth	14"	XSP1414V	XSP1514V	XSP1614V						
	15"	XSP1415V	XSP1515V	XSP1615V	XSP1715V	XSP1815V				
	16"	XSP1416V	XSP1516V	XSP1616V	XSP1716V	XSP1816V	XSP1916V	XSP2016V		XSP2216V
	17"	XSP1417V	XSP1517V	XSP1617V	XSP1717V	XSP1817V	XSP1917V	XSP2017V		XSP2217V
	18"	XSP1418V	XSP1518V	XSP1618V	XSP1718V	XSP1818V	XSP1918V	XSP2018V	XSP2118V	XSP2218V
	19"	XSP1419V	XSP1519V	XSP1619V	XSP1719V	XSP1819V	XSP1919V	XSP2019V	XSP2119V	XSP2219V
	20"	XSP1420V	XSP1520V	XSP1620V	XSP1720V	XSP1820V	XSP1920V	XSP2020V	XSP2120V	XSP2220V
	21"		XSP1521V	XSP1621V	XSP1721V	XSP1821V	XSP1921V	XSP2021V	XSP2121V	XSP2221V
	22"		XSP1522V	XSP1622V	XSP1722V	XSP1822V	XSP1922V	XSP2022V	XSP2122V	XSP2222V

Axiom SP Visco - Skin Protection & Positioning Cushion with Extra Outer Cover

Weight Capacity: 350 lbs

		Width								
		14"	15"	16"	17"	18"	19"	20"	21"	22"
Retail		\$640	\$640	\$640	\$640	\$640	\$640	\$640	\$754	\$754
HCPC		E2607	E2607	E2607	E2607	E2607	E2607	E2607	E2608	E2608
Depth	14"	XSP1414VC2	XSP1514VC2	XSP1614VC2						
	15"	XSP1415VC2	XSP1515VC2	XSP1615VC2	XSP1715VC2	XSP1815VC2				
	16"	XSP1416VC2	XSP1516VC2	XSP1616VC2	XSP1716VC2	XSP1816VC2	XSP1916VC2	XSP2016VC2		XSP2216VC2
	17"	XSP1417VC2	XSP1517VC2	XSP1617VC2	XSP1717VC2	XSP1817VC2	XSP1917VC2	XSP2017VC2		XSP2217VC2
	18"	XSP1418VC2	XSP1518VC2	XSP1618VC2	XSP1718VC2	XSP1818VC2	XSP1918VC2	XSP2018VC2	XSP2118VC2	XSP2218VC2
	19"	XSP1419VC2	XSP1519VC2	XSP1619VC2	XSP1719VC2	XSP1819VC2	XSP1919VC2	XSP2019VC2	XSP2119VC2	XSP2219VC2
	20"	XSP1420VC2	XSP1520VC2	XSP1620VC2	XSP1720VC2	XSP1820VC2	XSP1920VC2	XSP2020VC2	XSP2120VC2	XSP2220VC2
	21"		XSP1521VC2	XSP1621VC2	XSP1721VC2	XSP1821VC2	XSP1921VC2	XSP2021VC2	XSP2121VC2	XSP2221VC2
	22"		XSP1522VC2	XSP1622VC2	XSP1722VC2	XSP1822VC2	XSP1922VC2	XSP2022VC2	XSP2122VC2	XSP2222VC2

Axiom SP Fluid - Skin Protection & Positioning Cushion

Weight Capacity: 350 lbs

		Width								
		14"	15"	16"	17"	18"	19"	20"	21"	22"
Retail		\$525	\$525	\$525	\$525	\$525	\$525	\$525	\$643	\$643
HCPC		E2607	E2607	E2607	E2607	E2607	E2607	E2607	E2608	E2608
Depth	14"	XSP1414F	XSP1514F	XSP1614F						
	15"	XSP1415F	XSP1515F	XSP1615F	XSP1715F	XSP1815F				
	16"	XSP1416F	XSP1516F	XSP1616F	XSP1716F	XSP1816F	XSP1916F	XSP2016F		XSP2216F
	17"	XSP1417F	XSP1517F	XSP1617F	XSP1717F	XSP1817F	XSP1917F	XSP2017F		XSP2217F
	18"	XSP1418F	XSP1518F	XSP1618F	XSP1718F	XSP1818F	XSP1918F	XSP2018F	XSP2118F	XSP2218F
	19"	XSP1419F	XSP1519F	XSP1619F	XSP1719F	XSP1819F	XSP1919F	XSP2019F	XSP2119F	XSP2219F
	20"	XSP1420F	XSP1520F	XSP1620F	XSP1720F	XSP1820F	XSP1920F	XSP2020F	XSP2120F	XSP2220F
	21"		XSP1521F	XSP1621F	XSP1721F	XSP1821F	XSP1921F	XSP2021F	XSP2121F	XSP2221F
	22"		XSP1522F	XSP1622F	XSP1722F	XSP1822F	XSP1922F	XSP2022F	XSP2122F	XSP2222F



Phone (800) 981-1540 | Fax (715) 254-0996
 sales@kimobility.com | www.kimobility.com



Axiom SP Fluid - Skin Protection & Positioning Cushion with Extra Outer Cover

Weight Capacity: 350 lbs

		Width								
		14"	15"	16"	17"	18"	19"	20"	21"	22"
Retail		\$651	\$651	\$651	\$651	\$651	\$651	\$651	\$768	\$768
HCPC		E2607	E2607	E2607	E2607	E2607	E2607	E2607	E2608	E2608
Depth	14"	XSP1414FC2	XSP1514FC2	XSP1614FC2						
	15"	XSP1415FC2	XSP1515FC2	XSP1615FC2	XSP1715FC2	XSP1815FC2				
	16"	XSP1416FC2	XSP1516FC2	XSP1616FC2	XSP1716FC2	XSP1816FC2	XSP1916FC2	XSP2016FC2		XSP2216FC2
	17"	XSP1417FC2	XSP1517FC2	XSP1617FC2	XSP1717FC2	XSP1817FC2	XSP1917FC2	XSP2017FC2		XSP2217FC2
	18"	XSP1418FC2	XSP1518FC2	XSP1618FC2	XSP1718FC2	XSP1818FC2	XSP1918FC2	XSP2018FC2	XSP2118FC2	XSP2218FC2
	19"	XSP1419FC2	XSP1519FC2	XSP1619FC2	XSP1719FC2	XSP1819FC2	XSP1919FC2	XSP2019FC2	XSP2119FC2	XSP2219FC2
	20"	XSP1420FC2	XSP1520FC2	XSP1620FC2	XSP1720FC2	XSP1820FC2	XSP1920FC2	XSP2020FC2	XSP2120FC2	XSP2220FC2
	21"		XSP1521FC2	XSP1621FC2	XSP1721FC2	XSP1821FC2	XSP1921FC2	XSP2021FC2	XSP2121FC2	XSP2221FC2
	22"		XSP1522FC2	XSP1622FC2	XSP1722FC2	XSP1822FC2	XSP1922FC2	XSP2022FC2	XSP2122FC2	XSP2222FC2

Axiom AS - Adjustable Skin Protection Cushion

Weight capacity: 350 lbs

		Width								
		14"	15"	16"	17"	18"	19"	20"	21"	22"
Retail		\$654	\$654	\$654	\$654	\$654	\$654	\$654	\$758	\$758
HCPC		E2622	E2622	E2622	E2622	E2622	E2622	E2622	E2623	E2623
Depth	14"	XAS1414	XAS1514	XAS1614						
	15"	XAS1415	XAS1515	XAS1615	XAS1715					
	16"	XAS1416	XAS1516	XAS1616	XAS1716	XAS1816	XAS1916	XAS2016		XAS2216
	17"	XAS1417	XAS1517	XAS1617	XAS1717	XAS1817	XAS1917	XAS2017		XAS2217
	18"	XAS1418	XAS1518	XAS1618	XAS1718	XAS1818	XAS1918	XAS2018	XAS2118	XAS2218
	19"	XAS1419	XAS1519	XAS1619	XAS1719	XAS1819	XAS1919	XAS2019	XAS2119	XAS2219
	20"	XAS1420	XAS1520	XAS1620	XAS1720	XAS1820	XAS1920	XAS2020	XAS2120	XAS2220
	21"		XAS1521	XAS1621	XAS1721	XAS1821	XAS1921	XAS2021	XAS2121	XAS2221
	22"		XAS1522	XAS1622	XAS1722	XAS1822	XAS1922	XAS2022	XAS2122	XAS2222

Axiom AS - Adjustable Skin Protection Cushion with Extra Outer Cover

Weight capacity: 350 lbs

		Width								
		14"	15"	16"	17"	18"	19"	20"	21"	22"
Retail		\$777	\$777	\$777	\$777	\$777	\$777	\$777	\$881	\$881
HCPC		E2622	E2622	E2622	E2622	E2622	E2622	E2622	E2623	E2623
Depth	14"	XAS1414C2	XAS1514C2	XAS1614C2						
	15"	XAS1415C2	XAS1515C2	XAS1615C2	XAS1715C2					
	16"	XAS1416C2	XAS1516C2	XAS1616C2	XAS1716C2	XAS1816C2	XAS1916C2	XAS2016C2		XAS2216C2
	17"	XAS1417C2	XAS1517C2	XAS1617C2	XAS1717C2	XAS1817C2	XAS1917C2	XAS2017C2		XAS2217C2
	18"	XAS1418C2	XAS1518C2	XAS1618C2	XAS1718C2	XAS1818C2	XAS1918C2	XAS2018C2	XAS2118C2	XAS2218C2
	19"	XAS1419C2	XAS1519C2	XAS1619C2	XAS1719C2	XAS1819C2	XAS1919C2	XAS2019C2	XAS2119C2	XAS2219C2
	20"	XAS1420C2	XAS1520C2	XAS1620C2	XAS1720C2	XAS1820C2	XAS1920C2	XAS2020C2	XAS2120C2	XAS2220C2
	21"		XAS1521C2	XAS1621C2	XAS1721C2	XAS1821C2	XAS1921C2	XAS2021C2	XAS2121C2	XAS2221C2
	22"		XAS1522C2	XAS1622C2	XAS1722C2	XAS1822C2	XAS1922C2	XAS2022C2	XAS2122C2	XAS2222C2



Phone (800) 981-1540 | Fax (715) 254-0996
 sales@kimobility.com | www.kimobility.com



Axiom ASP - Adjustable Skin Protection & Positioning Cushion

Weight capacity: 350 lbs

		Width								
		14"	15"	16"	17"	18"	19"	20"	21"	22"
	Retail	\$674	\$674	\$674	\$674	\$674	\$674	\$674	\$779	\$779
	HPCP	E2624	E2624	E2624	E2624	E2624	E2624	E2624	E2625	E2625
Depth	14"	XASP1414	XASP1514	XASP1614						
	15"	XASP1415	XASP1515	XASP1615	XASP1715	XASP1815				
	16"	XASP1416	XASP1516	XASP1616	XASP1716	XASP1816	XASP1916	XASP2016		XASP2216
	17"	XASP1417	XASP1517	XASP1617	XASP1717	XASP1817	XASP1917	XASP2017		XASP2217
	18"	XASP1418	XASP1518	XASP1618	XASP1718	XASP1818	XASP1918	XASP2018	XASP2118	XASP2218
	19"	XASP1419	XASP1519	XASP1619	XASP1719	XASP1819	XASP1919	XASP2019	XASP2119	XASP2219
	20"	XASP1420	XASP1520	XASP1620	XASP1720	XASP1820	XASP1920	XASP2020	XASP2120	XASP2220
	21"		XASP1521	XASP1621	XASP1721	XASP1821	XASP1921	XASP2021	XASP2121	XASP2221
	22"		XASP1522	XASP1622	XASP1722	XASP1822	XASP1922	XASP2022	XASP2122	XASP2222

Axiom ASP - Adjustable Skin Protection & Positioning Cushion with Extra Outer Cover

Weight capacity: 350 lbs

		Width								
		14"	15"	16"	17"	18"	19"	20"	21"	22"
	Retail	\$798	\$798	\$798	\$798	\$798	\$798	\$798	\$903	\$903
	HPCP	E2624	E2624	E2624	E2624	E2624	E2624	E2624	E2625	E2625
Depth	14"	XASP1414C2	XASP1514C2	XASP1614C2						
	15"	XASP1415C2	XASP1515C2	XASP1615C2	XASP1715C2	XASP1815C2				
	16"	XASP1416C2	XASP1516C2	XASP1616C2	XASP1716C2	XASP1816C2	XASP1916C2	XASP2016C2		XASP2216C2
	17"	XASP1417C2	XASP1517C2	XASP1617C2	XASP1717C2	XASP1817C2	XASP1917C2	XASP2017C2		XASP2217C2
	18"	XASP1418C2	XASP1518C2	XASP1618C2	XASP1718C2	XASP1818C2	XASP1918C2	XASP2018C2	XASP2118C2	XASP2218C2
	19"	XASP1419C2	XASP1519C2	XASP1619C2	XASP1719C2	XASP1819C2	XASP1919C2	XASP2019C2	XASP2119C2	XASP2219C2
	20"	XASP1420C2	XASP1520C2	XASP1620C2	XASP1720C2	XASP1820C2	XASP1920C2	XASP2020C2	XASP2120C2	XASP2220C2
	21"		XASP1521C2	XASP1621C2	XASP1721C2	XASP1821C2	XASP1921C2	XASP2021C2	XASP2121C2	XASP2221C2
	22"		XASP1522C2	XASP1622C2	XASP1722C2	XASP1822C2	XASP1922C2	XASP2022C2	XASP2122C2	XASP2222C2

AS & ASP Modifications

Extended lead times will apply. Makes cushion non-refundable.

Rail Cut

XASNR

Bilateral Angled Seat Rail Relief Cut

N/C

Notch for Back Posts

XASNB

2" x 2" Bilateral Rear Notch for Back Post Clearance

N/C

Seating Accessories

Axiom Solid Seat Insert

Not available with Axiom One

\$73



Phone (800) 981-1540 | Fax (715) 254-0996
 sales@kimobility.com | www.kimobility.com



Star Standard Air Cushions

Star Sentinel, Powered by Kalogon

Sentinel (K0108)

\$500

Star Standard Air Cushion (2" Tall Cells)

Star Standard Air 13.5" - 21" (E2622)

\$507

Star Standard Air + Sentinel 13.5" - 21" (K0108)

\$1007

Star Standard Air 22.75" (E2623)

\$619

Star Standard Air + Sentinel 22.75" (K0108)

\$1119

		Fits Chair Width	12" to 14" (30 - 35 cm)	14" to 16" (35 - 40 cm)	16" to 17" (40- 44 cm)	17" to 19" (44 - 49 cm)	19" to 21" (49 - 54 cm)	21" to 24" (54 - 61 cm)		
		Cushion Width Flap to Flap	13.5	15.5	17.25	19.25	21	22.75		
		Cells	7	8	9	10	11	12	Fits Chair Depth	
Cushion Depth Flap to Flap	13.5	7	ESSCS1313-1						12" to 14" (30 - 35 cm)	
	15.5	8	ESSCS1315-1	ESSCS1515-1	ESSCS1715-1	ESSCS1915-1	ESSCS2115-1		14" to 16" (35 - 40 cm)	
	17.5	9		ESSCS1517-1	ESSCS1717-1	ESSCS1917-1	ESSCS2117-1	ESSCS2317-1	16" to 17" (40- 44 cm)	
	19.25	10		ESSCS1519-1	ESSCS1719-1	ESSCS1919-1	ESSCS2119-1		17" to 19" (44 - 49 cm)	
	21	11			ESSCS1721-1	ESSCS1921-1	ESSCS2121-1		19" to 21" (49 - 54 cm)	

Star Standard Air Cushion (3" Tall Cells)

Star Standard Air 13.5" - 21" (E2622)

\$507

Star Standard Air + Sentinel 13.5" - 21" (K0108)

\$1007

		Fits Chair Width	12" to 14" (30 - 35 cm)	14" to 16" (35 - 40 cm)	16" to 17" (40- 44 cm)	17" to 19" (44 - 49 cm)	19" to 21" (49 - 54 cm)		
		Cushion Width Flap to Flap	13.5	15.5	17.25	19.25	21		
		Cells	7	8	9	10	11	Fits Chair Depth	
Cushion Depth Flap to Flap	15.5	8	ESMC1315-1	ESMC1515-1	ESMC1715-1	ESMC1915-1		14" to 16" (35 - 40 cm)	
	17.5	9		ESMC1517-1	ESMC1717-1	ESMC1917-1	ESMC2117-1	16" to 17" (40- 44 cm)	
	19.25	10		ESMC1519-1	ESMC1719-1	ESMC1919-1	ESMC2119-1	17" to 19" (44 - 49 cm)	
	21	11			ESMC1721-1	ESMC1921-1	ESMC2121-1	19" to 21" (49 - 54 cm)	

HCPCS Codes provided are based on code verification by the PDAC or our interpretation of the code definitions.

Proper use of HCPCS Codes does not ensure coverage or payment. For coverage information, verify the appropriate payer's coverage policy.

DCN0903.5 Pricing and specifications subject to change without notice.



Phone (800) 981-1540 | Fax (715) 254-0996
 sales@kimobility.com | www.kimobility.com



Star Standard Air Cushion (4" Tall Cells)

Star Standard Air 13.5" - 21" (E2622) \$507
 Star Standard Air 22.75" (E2623) \$619
 Star Standard Air + Sentinel 13.5" - 21" (K0108) \$1007
 Star Standard Air + Sentinel 22.75" (K0108) \$1119

		Fits Chair Width	12" to 14" (30 - 35 cm)	14" to 16" (35 - 40 cm)	16" to 17" (40 - 44 cm)	17" to 19" (44 - 49 cm)	19" to 21" (49 - 54 cm)	21" to 24" (54 - 61 cm)		
		Cushion Width Flap to Flap	13.5	15.5	17.25	19.25	21	22.75		
		Cells	7	8	9	10	11	12	Fits Chair Depth	
Cushion Depth Flap to Flap	13.5	7	ESSC1313-1	ESSC1513-1	ESSC1713-1				12" to 14" (30 - 35 cm)	
	15.5	8	ESSC1315-1	ESSC1515-1	ESSC1715-1	ESSC1915-1	ESSC2115-1		14" to 16" (35 - 40 cm)	
	17.5	9		ESSC1517-1	ESSC1717-1	ESSC1917-1	ESSC2117-1	ESSC2317-1	16" to 17" (40 - 44 cm)	
	19.25	10		ESSC1519-1	ESSC1719-1	ESSC1919-1	ESSC2119-1	ESSC2319-1	17" to 19" (44 - 49 cm)	
	21	11			ESSC1721-1	ESSC1921-1	ESSC2121-1	ESSC2321-1	19" to 21" (49 - 54 cm)	

Star Standard Air Cushions Dual Valve

Star Standard Air Cushion Dual Valve (4" Tall Cells)

Star Standard Air 13.5" - 21" (E2624) \$507
 Star Standard Air 22.75" (E2625) \$619

		Fits Chair Width	12" to 14" (30 - 35 cm)	14" to 16" (35 - 40 cm)	16" to 17" (40 - 44 cm)	17" to 19" (44 - 49 cm)	19" to 21" (49 - 54 cm)		
		Cushion Width Flap to Flap	13.5	15.5	17.25	19.25	21		
		Cells	7	8	9	10	11	Fits Chair Depth	
Cushion Depth Flap to Flap	13.5	7	ESSC1313-2					12" to 14" (30 - 35 cm)	
	15.5	8	ESSC1315-2	ESSC1515-2	ESSC1715-2	ESSC1915-2		14" to 16" (35 - 40 cm)	
	17.5	9		ESSC1517-2	ESSC1717-2	ESSC1917-2	ESSC2117-2	16" to 17" (40 - 44 cm)	
	19.25	10			ESSC1719-2	ESSC1919-2		17" to 19" (44 - 49 cm)	
	21	11				ESSC1921-2	ESSC2121-2	19" to 21" (49 - 54 cm)	

Star Stabil-Air Cushions

Star Sentinel, Powered by Kalogon

Sentinel (K0108) \$500

Star Stabil-Air Cushion (3" Tall Cells)

Star Stabil-Air 13.5" - 21" (E2622) \$575
 Star Stabil-Air 22.75" (E2623) \$706
 Star Stabil-Air + Sentinel 13.5" - 21" (K0108) \$1075
 Star Stabil-Air + Sentinel 22.75" (K0108) \$1206

		Fits Chair Width	12" to 14" (30 - 35 cm)	14" to 16" (35 - 40 cm)	16" to 17" (40 - 44 cm)	17" to 19" (44 - 49 cm)	19" to 21" (49 - 54 cm)	21" to 24" (54 - 61 cm)		
		Cushion Width Flap to Flap	13.5	15.5	17.25	19.25	21	22.75		
		Cells	7	8	9	10	11	12	Fits Chair Depth	
Cushion Depth Flap to Flap	13.5	7	ESSA31313-1						12" to 14" (30 - 35 cm)	
	15.5	8	ESSA31315-1	ESSA31515-1	ESSA31715-1	ESSA31915-1			14" to 16" (35 - 40 cm)	
	17.5	9		ESSA31517-1	ESSA31717-1	ESSA31917-1	ESSA32117-1	ESSA32317-1	16" to 17" (40 - 44 cm)	
	19.25	10		ESSA31519-1	ESSA31719-1	ESSA31919-1	ESSA32119-1	ESSA32319-1	17" to 19" (44 - 49 cm)	
	21	11			ESSA31721-1	ESSA31921-1	ESSA32121-1		19" to 21" (49 - 54 cm)	



Phone (800) 981-1540 | Fax (715) 254-0996
 sales@kimobility.com | www.kimobility.com



Star Stabil-Air Cushion (4" Tall Cells)

Star Stabil-Air 13.5" - 21" (E2622)	\$575	Star Stabil-Air + Sentinel 13.5" - 21" (K0108)	\$1075
Star Stabil-Air 22.75" (E2623)	\$706	Star Stabil-Air + Sentinel 22.75" (K0108)	\$1206

		Fits Chair Width	12" to 14" (30 - 35 cm)	14" to 16" (35 - 40 cm)	16" to 17" (40- 44 cm)	17" to 19" (44 - 49 cm)	19" to 21" (49 - 54 cm)	21" to 24" (54 - 61 cm)		
		Cushion Width Flap to Flap	13.5	15.5	17.25	19.25	21	22.75		
		Cells	7	8	9	10	11	12	Fits Chair Depth	
Cushion Depth Flap to Flap	13.5	7	ESSA41313-1						12" to 14" (30 - 35 cm)	
	15.5	8	ESSA41315-1	ESSA41515-1	ESSA41715-1	ESSA41915-1			14" to 16" (35 - 40 cm)	
	17.5	9	ESSA41317-1	ESSA41517-1	ESSA41717-1	ESSA41917-1	ESSA42117-1	ESSA42317-1	16" to 17" (40- 44 cm)	
	19.25	10		ESSA41519-1	ESSA41719-1	ESSA41919-1	ESSA42119-1	ESSA42319-1	17" to 19" (44 - 49 cm)	
	21	11		ESSA41521-1	ESSA41721-1	ESSA41921-1	ESSA42121-1	ESSA42321-1	19" to 21" (49 - 54 cm)	

Star StarLock Cushions

StarLock 3" Tall Cells

StarLock 13.5" - 21" (E2624)	\$613
------------------------------	-------

Star StarLock Cushion (3" Tall Cells)

		Fits Chair Width	12" to 14" (30 - 35 cm)	14" to 16" (35 - 40 cm)	16" to 17" (40- 44 cm)	17" to 19" (44 - 49 cm)	19" to 21" (49 - 54 cm)		
		Cushion Width Flap to Flap	13.5	15.5	17.25	19.25	21		
		Cells	7	8	9	10	11	Fits Chair Depth	
Cushion Depth Flap to Flap	13.5	7	ESSL31313-1					12" to 14" (30 - 35 cm)	
	15.5	8	ESSL31315-1	ESSL31515-1	ESSL31715-1	ESSL31915-1		14" to 16" (35 - 40 cm)	
	17.5	9		ESSL31517-1	ESSL31717-1	ESSL31917-1	ESSL32117-1	16" to 17" (40- 44 cm)	
	19.25	10		ESSL31519-1	ESSL31719-1	ESSL31919-1	ESSL32119-1	17" to 19" (44 - 49 cm)	
	21	11			ESSL31721-1	ESSL31921-1	ESSL32121-1	19" to 21" (49 - 54 cm)	

StarLock 4" Tall Cells

StarLock 13.5" - 21" (E2624)	\$613
------------------------------	-------

Star StarLock Cushion (4" Tall Cells)

		Fits Chair Width	12" to 14" (30 - 35 cm)	14" to 16" (35 - 40 cm)	16" to 17" (40- 44 cm)	17" to 19" (44 - 49 cm)	19" to 21" (49 - 54 cm)		
		Cushion Width Flap to Flap	13.5	15.5	17.25	19.25	21		
		Cells	7	8	9	10	11	Fits Chair Depth	
Cushion Depth Flap to Flap	13.5	7	ESSL41313-1					12" to 14" (30 - 35 cm)	
	15.5	8	ESSL41315-1	ESSL41515-1	ESSL41715-1	ESSL41915-1		14" to 16" (35 - 40 cm)	
	17.5	9	ESSL41317-1	ESSL41517-1	ESSL41717-1	ESSL41917-1	ESSL42117-1	16" to 17" (40- 44 cm)	
	19.25	10		ESSL41519-1	ESSL41719-1	ESSL41919-1	ESSL42119-1	17" to 19" (44 - 49 cm)	
	21	11			ESSL41721-1	ESSL41921-1	ESSL42121-1	19" to 21" (49 - 54 cm)	



Phone (800) 981-1540 | Fax (715) 254-0996
 sales@kimobility.com | www.kimobility.com



StarLock 5" Tall Cells

StarLock 14" - 20" (E2624)	\$629
StarLock 22" (E2625)	\$733

Star StarLock Cushion (5" Tall Cells)

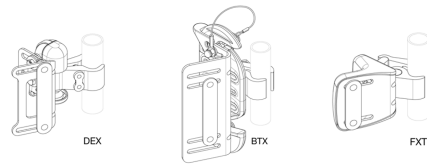
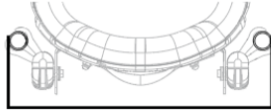
		Fits Chair Width	13" to 15" (33 - 38cm)	15" to 17" (38 - 43 cm)	17" to 19" (44 - 49 cm)	19" to 21" (49 - 54 cm)	21" to 23" (54 - 58 cm)	
		Cushion Width Flap to Flap	14	16	18	20	22	
		Cells	6	7	8	9	10	Fits Chair Depth
Cushion Depth Flap to Flap	14	6	ESSL51414-1					13" to 15" (33 - 38cm)
	16	7	ESSL51416-1	ESSL51616-1	ESSL51816-1	ESSL52016-1		15" to 17" (38 - 43 cm)
	18	8	ESSL51418-1	ESSL51618-1	ESSL51818-1	ESSL52018-1	ESSL52218-1	17" to 19" (44 - 49 cm)
	20	9		ESSL51620-1	ESSL51820-1	ESSL52020-1	ESSL52220-1	19" to 21" (49 - 54 cm)
	22	10		ESSL51622-1	ESSL51822-1	ESSL52022-1	ESSL52222-1	21" to 23" (54 - 58 cm)

Extra Cover

Standard Cover up to 21" Wide	\$74	Incontinence Resistant Cover up to 21" Wide	\$86
Standard Cover 22" and Wider	\$97	Incontinence Resistant Cover 22" and Wider	\$111

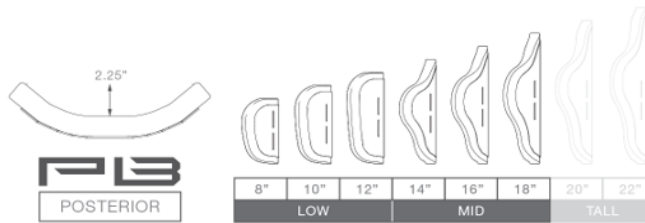
Axiom Back Width	Fits Back Frame Widths	
	Inner Slots	Outer Slots
12" (30.5cm)	11" (28.0cm)	12" -14" (30.5cm - 35.5cm)
14" (35.5cm)	12" -13" (30.5cm - 33.0cm)	14" -16" (35.5cm - 40.5cm)
16" (40.5cm)	14" -15" (35.5cm - 38.0cm)	16" -18" (40.5cm - 45.5cm)
18" (45.5cm)	16" - 17" (40.5cm - 43.0cm)	18" - 20" (45.5cm - 51.0cm)
20" (51.0cm)	18" -19" (45.5cm - 48.5cm)	20" -22" (51.0cm - 56.0cm)
22" (56.0cm)	20" -21" (51.0cm - 53.5cm)	22" -24" (56.0cm - 61.0cm)

Hardware Description	Code
Improved DEX Hardware, removable adjustable hardware (300 lb max user weight)	DEX
New BTX Hardware, removable adjustable hardware not recommended for, or installed on Ultralight Rigid Frame Wheelchairs (400 lb max user weight)	BTX
New Fixed Hardware, non-removeable hardware up to (300 lb max user weight)	FXT



Axiom Posterior Back (PB)

Includes Lumbar Pad. Hardware is included with back. Selection must be made below. Low Back selections are not available with headrests, or posture supports.



		Wheelchair Frame Width						
		12"	14"	16"	18"	20"	22"	
Axiom Back Height	Retail		\$651	\$651	\$651	\$651	\$651	\$979
		HCPCS	E2613	E2613	E2613	E2613	E2613	E2614
	Low	8"	AXPB1208	AXPB1408	AXPB1608	AXPB1808	AXPB2008	
		10"		AXPB1410	AXPB1610	AXPB1810	AXPB2010	AXPB2210
		12"	AXPB1212	AXPB1412	AXPB1612	AXPB1812	AXPB2012	
	Mid	14"		AXPB1414	AXPB1614	AXPB1814	AXPB2014	AXPB2214
		16"	AXPB1216	AXPB1416	AXPB1616	AXPB1816	AXPB2016	
		18"		AXPB1418	AXPB1618	AXPB1818	AXPB2018	AXPB2218

Back Hardware

FXT Hardware is not available with Lateral Support Options

DEX Hardware BTX Hardware FXT Hardware _____ N/C

HCPCS Codes provided are based on code verification by the PDAC or our interpretation of the code definitions.

Proper use of HCPCS Codes does not ensure coverage or payment. For coverage information, verify the appropriate payer's coverage policy.

DCN0473.15 Pricing and specifications subject to change without notice.

Lateral Support for AXPB Backs



Fixed Modular Mounting Hardware

Swing Away Mounting Hardware

Adjustable Link, Swing Away, Fixed Pad Mount Hardware

Adjustable Link, Swing Away, Swivel Pad Mount Hardware

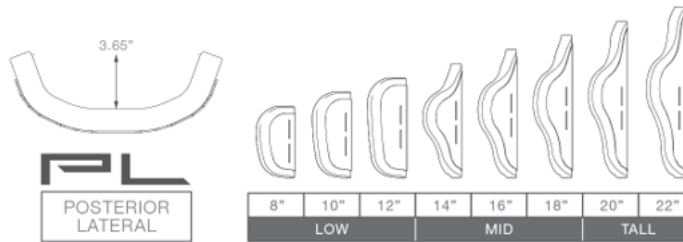
Pair	Description	Item Code	HCPCS	Retail
	3 x 4 Curved Lateral Pads with Fixed Mounting Hardware - Pair (E0956)	PBLF3x4PP	E0956	\$319
	4 x 5 Curved Lateral Pads with Fixed Mounting Hardware - Pair (E0956)	PBLF4X5PP	E0956	\$319
	3 x 4 Curved Lateral Pads with Swing Away Mounting Hardware - Pair (E0956,E1034)	PBS3X4PP	E0956, E1034	\$679
	4 x 5 Curved Lateral Pads with Swing Away Mounting Hardware - Pair (E0956,E1034)	PBS4X5PP	E0956, E1034	\$679
	3 x 4 Curved Lateral Pads with Adjustable Link, Swing Away, Fixed Pad Mount Hardware - Pair (E0956,E1034)	PBLALSF3X4PP	E0956, E1034	\$906
	4 x 5 Curved Lateral Pads with Adjustable Link, Swing Away, Fixed Pad Mount Hardware - Pair (E0956,E1034)	PBLALSF4X5PP	E0956, E1034	\$906
	3 x 4 Curved Lateral Pads with Adjustable Link, Swing Away, Swivel Pad Mount Hardware - Pair (E0956,E1034)	PBLALSS3X4PP	E0956, E1034	\$1006
	4 x 5 Curved Lateral Pads with Adjustable Link, Swing Away, Swivel Pad Mount Hardware - Pair (E0956,E1034)	PBLALSS4X5PP	E0956, E1034	\$1006

Pair	Description	Item Code	HCPCS	Retail
	Omnilink Hardware Cover 5" (Pair)	15534P	K0108	\$58

Available only with Adjustable Link Hardware

Axiom Posterior Lateral Back (PL)

Includes Lumbar Pad. Hardware is included with back. Selection must be made below. Low Back selections are not available with headrests, or posture supports.



		Wheelchair Frame Width						
		12"	14"	16"	18"	20"	22"	
Retail		\$752	\$752	\$752	\$752	\$752	\$1043	
HCPCS		E2615	E2615	E2615	E2615	E2615	E2616	
Axiom Back Height	Low	8"	AXPL1208	AXPL1408	AXPL1608	AXPL1808	AXPL2008	
		10"		AXPL1410	AXPL1610	AXPL1810	AXPL2010	AXPL2210
		12"	AXPL1212	AXPL1412	AXPL1612	AXPL1812	AXPL2012	
	Mid	14"		AXPL1414	AXPL1614	AXPL1814	AXPL2014	AXPL2214
		16"	AXPL1216	AXPL1416	AXPL1616	AXPL1816	AXPL2016	
		18"		AXPL1418	AXPL1618	AXPL1818	AXPL2018	AXPL2218
	Tall	20"	AXPL1220	AXPL1420	AXPL1620	AXPL1820	AXPL2020	
		22"		AXPL1422	AXPL1622	AXPL1822	AXPL2022	AXPL2222

Back Hardware

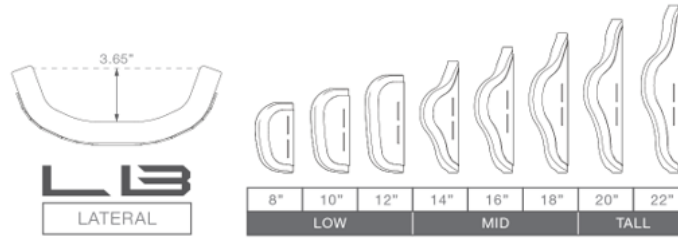
FXT Hardware is not available with Lateral Support Options

DEX Hardware BTX Hardware FXT Hardware

N/C

Axiom Lateral Back (LB)

Does not include Lumbar Pad. Hardware is included with back. Selection must be made below. Low Back selections are not available with headrests, or posture supports.



		Wheelchair Frame Width						
		12"	14"	16"	18"	20"	22"	
Retail		\$908	\$908	\$908	\$908	\$908	\$1056	
HCPCS		E2620	E2620	E2620	E2620	E2620	E2621	
Axiom Back Height	Low	8"	AXLB1208	AXLB1408	AXLB1608	AXLB1808	AXLB2008	
		10"		AXLB1410	AXLB1610	AXLB1810	AXLB2010	AXLB2210
		12"	AXLB1212	AXLB1412	AXLB1612	AXLB1812	AXLB2012	
	Mid	14"		AXLB1414	AXLB1614	AXLB1814	AXLB2014	AXLB2214
		16"	AXLB1216	AXLB1416	AXLB1616	AXLB1816	AXLB2016	
		18"		AXLB1418	AXLB1618	AXLB1818	AXLB2018	AXLB2218
	Tall	20"	AXLB1220	AXLB1420	AXLB1620	AXLB1820	AXLB2020	
		22"		AXLB1422	AXLB1622	AXLB1822	AXLB2022	AXLB2222

Back Hardware

FXT Hardware is not available with Lateral Support Options

DEX Hardware BTX Hardware FXT Hardware _____ N/C

Lateral Support for AXPL & AXLB Backs



Fixed Modular Mounting Hardware

Swing Away Mounting Hardware

Adjustable Link, Swing Away, Fixed Pad Mount Hardware

Adjustable Link, Swing Away, Swivel Pad Mount Hardware

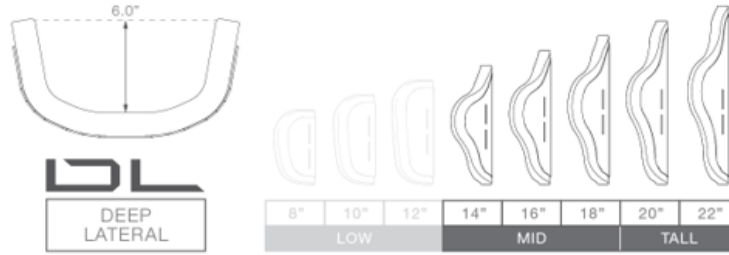
Pair	Description	Item Code	HCPCS	Retail
	3 x 4 Curved Lateral Pads with Fixed Mounting Hardware - Pair (E0956)	PLLF3x4PP	E0956	\$319
	4 x 5 Curved Lateral Pads with Fixed Mounting Hardware - Pair (E0956)	PLLF4x5PP	E0956	\$319
	3 x 4 Curved Lateral Pads with Swing Away Mounting Hardware - Pair (E0956,E1034)	PLLS3x4PP	E0956, E1034	\$679
	4 x 5 Curved Lateral Pads with Swing Away Mounting Hardware - Pair (E0956,E1034)	PLLS4x5PP	E0956, E1034	\$679
	3 x 4 Curved Lateral Pads with Adjustable Link, Swing Away, Fixed Pad Mounting Hardware - Pair (E0956,E1034)	PLLALSF3X4PP	E0956, E1034	\$906
	4 x 5 Curved Lateral Pads with Adjustable Link, Swing Away, Fixed Pad Mounting Hardware - Pair (E0956,E1034)	PLLALSF4X5PP	E0956, E1034	\$906
	3 x 4 Curved Lateral Pads with Adjustable Link, Swing Away, Swivel Pad Mounting Hardware - Pair (E0956,E1034)	PLLALSS3X4PP	E0956, E1034	\$1006
	4 x 5 Curved Lateral Pads with Adjustable Link, Swing Away, Swivel Pad Mounting Hardware - Pair (E0956,E1034)	PLLALSS4X5PP	E0956, E1034	\$1006

Pair	Description	Item Code	HCPCS	Retail
	Omnilink Hardware Cover 5" (Pair)	15534P	K0108	\$58

Available only with Adjustable Link Hardware

Axiom Deep Lateral Back (DL)

Does not include Lumbar Pad. Hardware is included with back. Selection must be made below.



		Wheelchair Frame Width						
		12"	14"	16"	18"	20"	22"	
Axiom Back Height	Retail		\$908	\$908	\$908	\$908	\$908	\$1056
		HCPCS	E2620	E2620	E2620	E2620	E2620	E2621
	Mid	14"	AXDL1214	AXDL1414	AXDL1614	AXDL1814	AXDL2014	AXDL2214
		16"		AXDL1416	AXDL1616	AXDL1816	AXDL2016	
		18"	AXDL1218	AXDL1418	AXDL1618	AXDL1818	AXDL2018	AXDL2218
	Tall	20"	AXDL1220	AXDL1420	AXDL1620	AXDL1820	AXDL2020	
		22"		AXDL1422	AXDL1622	AXDL1822	AXDL2022	AXDL2222

Back Hardware

DEX Hardware BTX Hardware FXT Hardware _____ N/C

Headrests

Selection of a Headrest Pad requires a selection from Headrest Mounting Hardware section below



Contour Positioning



Tri-Pad Adjustable



Comfort Soft



TriSoft



Comfort Soft Adjustable

Headrest Pads			
Description	Item Code	HCPCS	Retail
Contour Positioning Headrest Pad, Small, 8W x 6.25H (E0955)	116919	E0955	\$190
Contour Positioning Headrest Pad, Medium, 9W x 6.5H (E0955)	116921	E0955	\$190
Contour Positioning Headrest Pad, Large, 10W x 7.5H (E0955)	116923	E0955	\$190
Tri-Pad Adjustable Headrest, Small (E0955)	116925	E0955	\$460
Tri-Pad Adjustable Headrest, Medium (E0955)	116927	E0955	\$460
Tri-Pad Adjustable Headrest, Large (E0955)	116929	E0955	\$460
Comfort Soft Headrest, 8" (E0955)	116931	E0955	\$204
Comfort Soft Headrest, 10" (E0955)	116933	E0955	\$204
Comfort Soft Headrest, 14" (E0955)	116935	E0955	\$204
Comfort Soft Headrest, 19" (E0955)	116937	E0955	\$235
TriSoft Headrest, 10" (E0955)	116939	E0955	\$204
TriSoft Headrest, 14" (E0955)	116941	E0955	\$204
Comfort Soft Adjustable Headrest, 10" (E0955)	116943	E0955	\$383
Comfort Soft Adjustable Headrest, 14" (E0955)	116945	E0955	\$383
Comfort Soft Adjustable Headrest, 19" (E0955)	116947	E0955	\$477

See Axiom Hardware Sizing Guide for full item sizing

Headrest Hardware

Selection of Headrest Hardware requires a selection from Headrest Pad section above



**Std. Straight
Removable Adjustable**



**Multi-Axis
Removable Adjustable**



**Omnilink
Multi-Axis Adjustable**



**Posalinc
Removable Adjustable**



**Posalinc
Flip-Back Adjustable**

Headrest Hardware			
Description	Item Code	HCPCS	Retail
Standard Straight Removable Adjustable Hardware (E1033)	120038	E1033	\$198
Multi-Axis Removable Adjustable Hardware (E1033)	120039	E1033	\$295
Omnilink Multi-Axis Adjustable Hardware (E1033)	125494	E1033	\$417
POSAlinc Removable Adjustable Hardware (E1033)	120040	E1033	\$359
POSAlinc Removable Adjustable Hardware, Tall (E1033)	123528	E1033	\$396
POSAlinc Flip-Back Adjustable Hardware (E1033)	123530	E1033	\$430
POSAlinc Flip-Back Adjustable Hardware, Tall (E1033)	123531	E1033	\$474

Universal Headrest Mounting Plate (K0108)
 Not required with Axiom Headrests

\$54

Anterior Trunk Supports

Not available with Low Backs



**2-Piece
Hook & Loop**



**1-Piece
with Buckle**



**Dynaform Standard,
Dynamic**



**Dynaform Slim Cut,
Dynamic**



**Airlogic Standard,
Structure**



**Airlogic Slim Cut,
Dynamic**

Anterior Trunk Supports			
Description	Item Code	HCPCS	Retail
Dynaform Chest Support: 2-Piece with Hook&Loop, 3" High Pad, Small	14941	E0960	\$146
Dynaform Chest Support: 2-Piece with Hook&Loop, 4" High Pad, Medium	14942	E0960	\$146
Dynaform Chest Support: 2-Piece with Hook&Loop, 5" High Pad, Large	14943	E0960	\$146
Dynaform Chest Support: 1-Piece with Buckle, 3" Height x 18" Width, Small	14924	E0960	\$146
Dynaform Chest Support: 1-Piece with Buckle, 4" Height x 20" Width, Medium	14927	E0960	\$146
Dynaform Chest Support: 1-Piece with Buckle, 4" Height x 22" Width, Large	14928	E0960	\$146
Dynaform Anterior Trunk Support: Standard, Dynamic, X-Small	14851	E0960	\$179
Dynaform Anterior Trunk Support: Standard, Dynamic, Small	14852	E0960	\$179
Dynaform Anterior Trunk Support: Standard, Dynamic, Medium	14853	E0960	\$179
Dynaform Anterior Trunk Support: Standard, Dynamic, Large	14854	E0960	\$179
Dynaform Anterior Trunk Support: Slim Cut, Dynamic, X-Small	14856	E0960	\$179
Dynaform Anterior Trunk Support: Slim Cut, Dynamic, Small	14857	E0960	\$179
Dynaform Anterior Trunk Support: Slim Cut, Dynamic, Medium	14858	E0960	\$179
Dynaform Anterior Trunk Support: Slim Cut, Dynamic, Large	14859	E0960	\$179



Phone (800) 981-1540 | Fax (715) 254-0996
 sales@kimobility.com | www.kimobility.com



Anterior Trunk Supports Continued			
Description	Item Code	HCPCS	Retail
AirLogic Anterior Trunk Support: Standard, Structure, Small	14282	E0960	\$203
AirLogic Anterior Trunk Support: Standard, Structure, Medium	14283	E0960	\$203
AirLogic Anterior Trunk Support: Standard, Structure, Large	14284	E0960	\$203
AirLogic Anterior Trunk Support: Standard, Structure, X-Large	14285	E0960	\$203
AirLogic Anterior Trunk Support: Slim Cut, Dynamic, Small	14257	E0960	\$203
AirLogic Anterior Trunk Support: Slim Cut, Dynamic, Medium	14258	E0960	\$203
AirLogic Anterior Trunk Support: Slim Cut, Dynamic, Large	14259	E0960	\$203
AirLogic Anterior Trunk Support: Slim Cut, Dynamic, X-Large	14260	E0960	\$203

Accessories

Adjustable Shoulder Guides (K0108) <i>Not available with Low Backs</i>	\$101
Lumbar Pad (K0108) <i>Available only with Axiom Lateral Back and Axiom Deep Lateral Back</i>	\$54
Privacy Flap (K0108)	\$54

Axiom Back Modifications

Extended lead times may apply. Makes back non-refundable. If no selection is made, standard Shadow Black will be used with no additional lead time.

Gloss Finish Back Shell

Touch-up paint is available for purchase through the parts manual

Black	N/C
Ruby Red	N/C
Radiant Orange	N/C
Yellow	N/C
Electric Green	N/C
Rich Teal	N/C
Glacier Blue	N/C
Blue Steel	N/C
Deep Sapphire Blue	N/C
Purple Plum	N/C
Opalescent Violet	N/C
Dark Pink	N/C
Light Pink	N/C
Champagne	N/C

Matte Finish Back Shell

Touch-up paint is available for purchase through the parts manual

Iridescent Navy	N/C
Bright Red	N/C
Tactical Green	N/C
Dry Earth Tan	N/C
Platinum	N/C
White	N/C