

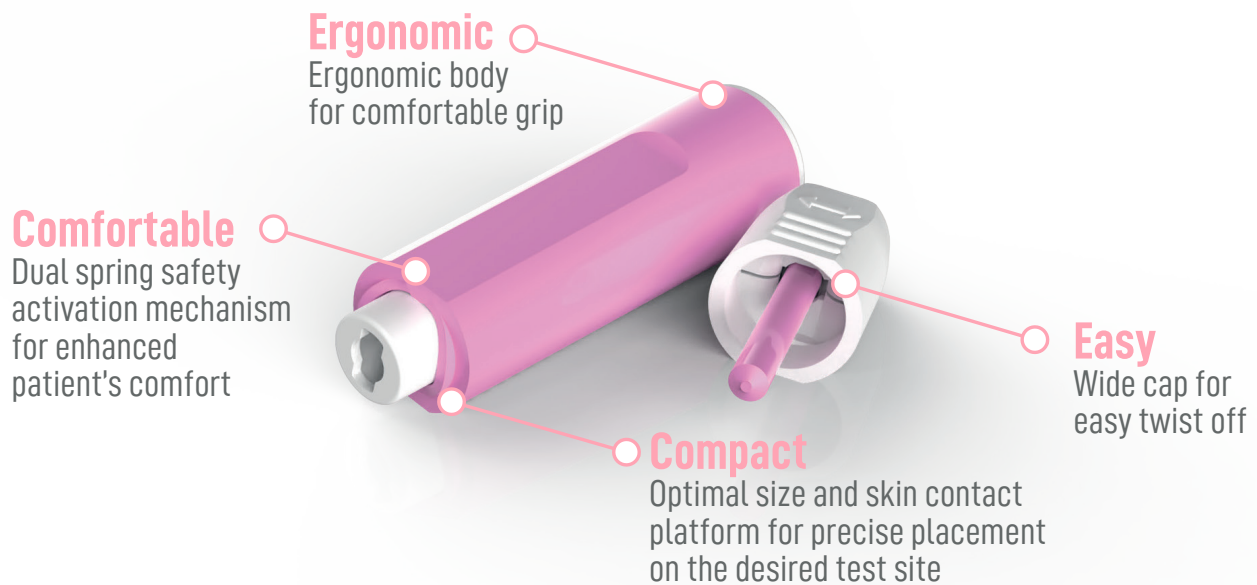
GLUCO-CARE[®]

Safety Lancets
Pen Needles
Insulin Syringes
Insulin Safety Syringes
BGM

125
CATALOG

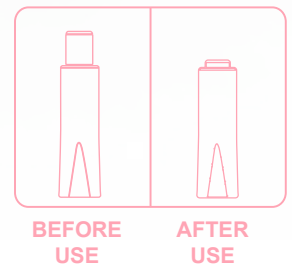


www.gluco-care.com



VISUAL ACTIVATION INDICATOR

Safety tab is removed and white shield remains permanently depressed after use.



Every product detail designed with ease of use and comfort in mind



Ordering Information

REF	PRODUCT	PACKAGING
1111	GLUCO-CARE [®] Safety Lancets 30G x 1.8mm	100 pcs / box 5,000 pcs / case
1112	GLUCO-CARE [®] Safety Lancets 28G x 1.8mm	100 pcs / box 5,000 pcs / case
1113	GLUCO-CARE [®] Safety Lancets 26G x 1.8mm	100 pcs / box 5,000 pcs / case
1114	GLUCO-CARE [®] Safety Lancets 21G x 1.8mm	100 pcs / box 5,000 pcs / case
1115	GLUCO-CARE [®] Safety Lancets 21G x 2.4mm	100 pcs / box 5,000 pcs / case
1116	GLUCO-CARE [®] Safety Lancets 21G x 2.8mm	100 pcs / box 5,000 pcs / case
1117	GLUCO-CARE [®] Safety Lancets 23G x 1.8mm	100 pcs / box 5,000 pcs / case
1118	GLUCO-CARE [®] Safety Lancets 23G x 2.4mm	100 pcs / box 5,000 pcs / case

GLUCO-CARE[®]

PEN NEEDLES **PLUS**

Ultra-Thin Needle
with triple-faucet bevel
for user comfort



Silicone-coating
for gentle needle insertion

Thin-Wall Technology

for optimal flow and
reduced dosage force

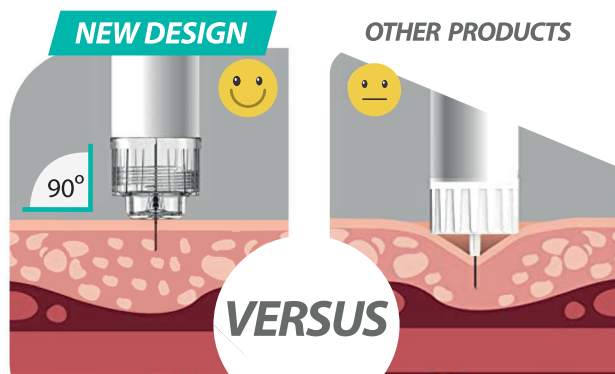


Improved Skin Contact Design
for reduced pressure
on the injection site



Universal Design

Compatible fit with most pen injectors



Ordering Information

REF	PRODUCT	COLOR	PACKAGING
3022	GLUCO-CARE [®] PLUS Pen Needles 32G x 4mm (5/32")		100 pcs / box 1200 pcs / case
3023	GLUCO-CARE [®] PLUS Pen Needles 32G x 5mm (3/16")		100 pcs / box 1200 pcs / case
3024	GLUCO-CARE [®] PLUS Pen Needles 32G x 6mm (1/4")		100 pcs / box 1200 pcs / case
3025	GLUCO-CARE [®] PLUS Pen Needles 33G x 4mm (5/32")		100 pcs / box 1200 pcs / case
3026	GLUCO-CARE [®] PLUS Pen Needles 31G x 5mm (5/32")		100 pcs / box 1200 pcs / case
3027	GLUCO-CARE [®] PLUS Pen Needles 31G x 6mm (5/32")		100 pcs / box 1200 pcs / case
3028	GLUCO-CARE [®] PLUS Pen Needles 31G x 8mm (5/32")		100 pcs / box 1200 pcs / case

www.gluco-care.com

Gentle¹

Precisely grinded three bevel tip, electro-polished and lubricated canulas for enhanced comfort

Thin-Wall Technology²

For optimal flow and reduced dosage force

Universal Design³

Compatible fit with most pen injectors available on the market



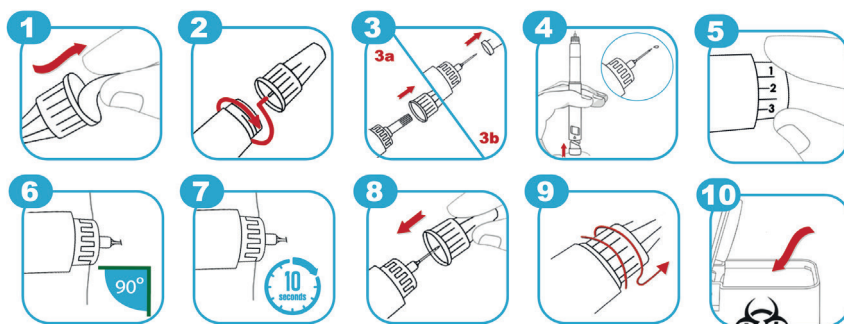
GENTLE

- Electro-polished, silicone-coated, ultra-thin needles guarantee enhanced user comfort³
- Easy flow canula with thin-wall technology minimizes the time of insulin delivery³
- Smooth and quick insertion thanks to special lubrication makes the injection a barely-noticeable experience¹

CONVENIENT

- Ergonomic design with ribbed housing ensures comfortable grip for secure attachment onto the pen injector³
- Color-coded versions for the right needle selection for every patient³
- ETO-sterilized and protected with outer cover and easy peel-off tab³

INSTRUCTIONS FOR USE



Ordering Information

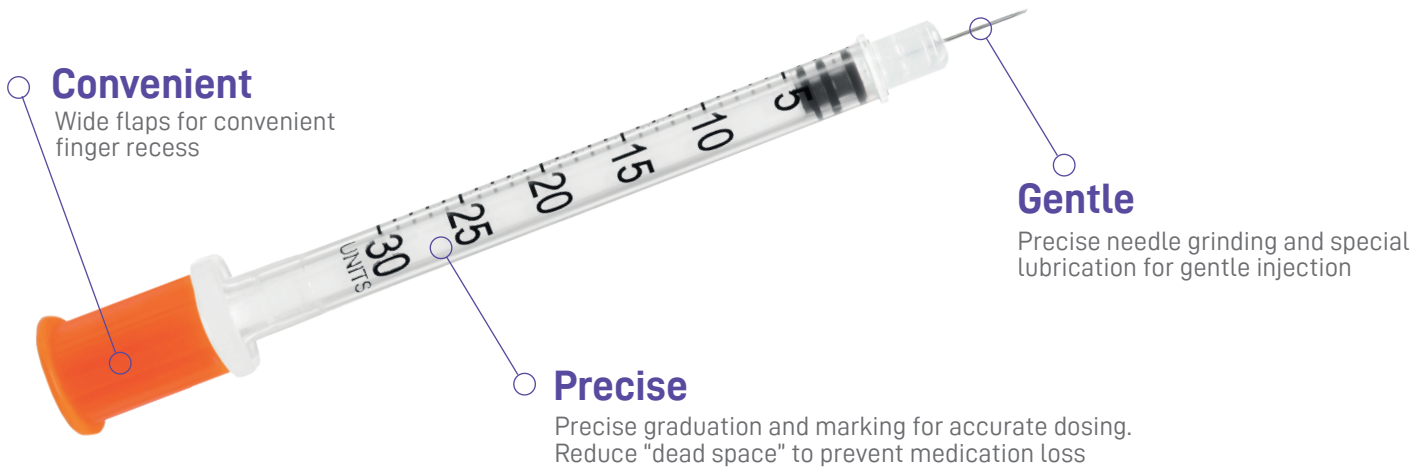
REF	DIAMETER (G) x DEPTH (mm/in)	COLOR	PACKAGING
3031	GLUCO-CARE [®] Pen Needles 33G x 4mm		100 pcs / box 5,000 pcs / case
3032	GLUCO-CARE [®] Pen Needles 32G x 4mm		100 pcs / box 5,000 pcs / case
3033	GLUCO-CARE [®] Pen Needles 32G x 5mm		100 pcs / box 5,000 pcs / case
3034	GLUCO-CARE [®] Pen Needles 32G x 6mm		100 pcs / box 5,000 pcs / case
3035	GLUCO-CARE [®] Pen Needles 32G x 8mm		100 pcs / box 5,000 pcs / case
3036	GLUCO-CARE [®] Pen Needles 31G x 4mm		100 pcs / box 5,000 pcs / case
3037	GLUCO-CARE [®] Pen Needles 31G x 5mm		100 pcs / box 5,000 pcs / case
3038	GLUCO-CARE [®] Pen Needles 31G x 6mm		100 pcs / box 5,000 pcs / case
3039	GLUCO-CARE [®] Pen Needles 31G x 8mm		100 pcs / box 5,000 pcs / case
3040	GLUCO-CARE [®] Pen Needles 30G x 8mm		100 pcs / box 5,000 pcs / case
3041	GLUCO-CARE [®] Pen Needles 29G x 10mm		100 pcs / box 5,000 pcs / case
3042	GLUCO-CARE [®] Pen Needles 29G x 12.7mm		100 pcs / box 5,000 pcs / case

REFERENCES

1. Præstmark KA, Jensen ML, Madsen NB, et al. Pen needle design influences ease of insertion, pain, and skin trauma in subjects with type 2 diabetes. *BMJ Open Diabetes Research and Care* 2016; 2. Kalra S, Pathan F, Kshanti IAM, Bay NQ, Nagase T, Oliveria T, Bajpai S. Optimising Insulin Injection Techniques to Improve Diabetes Outcomes. *Diabetes Ther*. 2023 Nov;14(11):1785-1799. doi: 10.1007/s13300-023-01460-y. Epub 2023 Sep 16. PMID: 37715887; PMCID: PMC10570228;
2. Data on file.
3. Data on file.

GLUCO-CARE[®]

INSULIN SYRINGES



Convenient

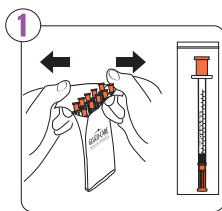
Wide flaps for convenient finger recess

Gentle

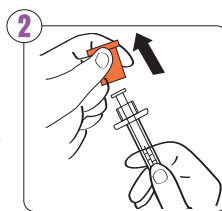
Precise needle grinding and special lubrication for gentle injection

Precise

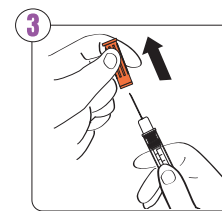
Precise graduation and marking for accurate dosing. Reduce "dead space" to prevent medication loss



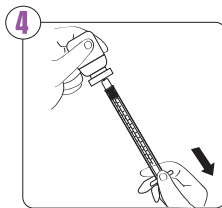
Open the package, remove the device.



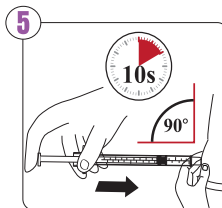
Remove the plunger cap.



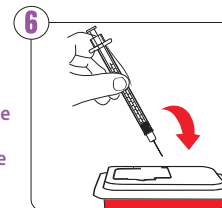
Remove the needle safety cap.



Draw up medication to the syringe.



Perform injection and deliver dose. Wait 10 seconds after depressing the plunger to ensure that the entire dose is delivered.



Dispose of the used device into a sharps container.

Ordering Information

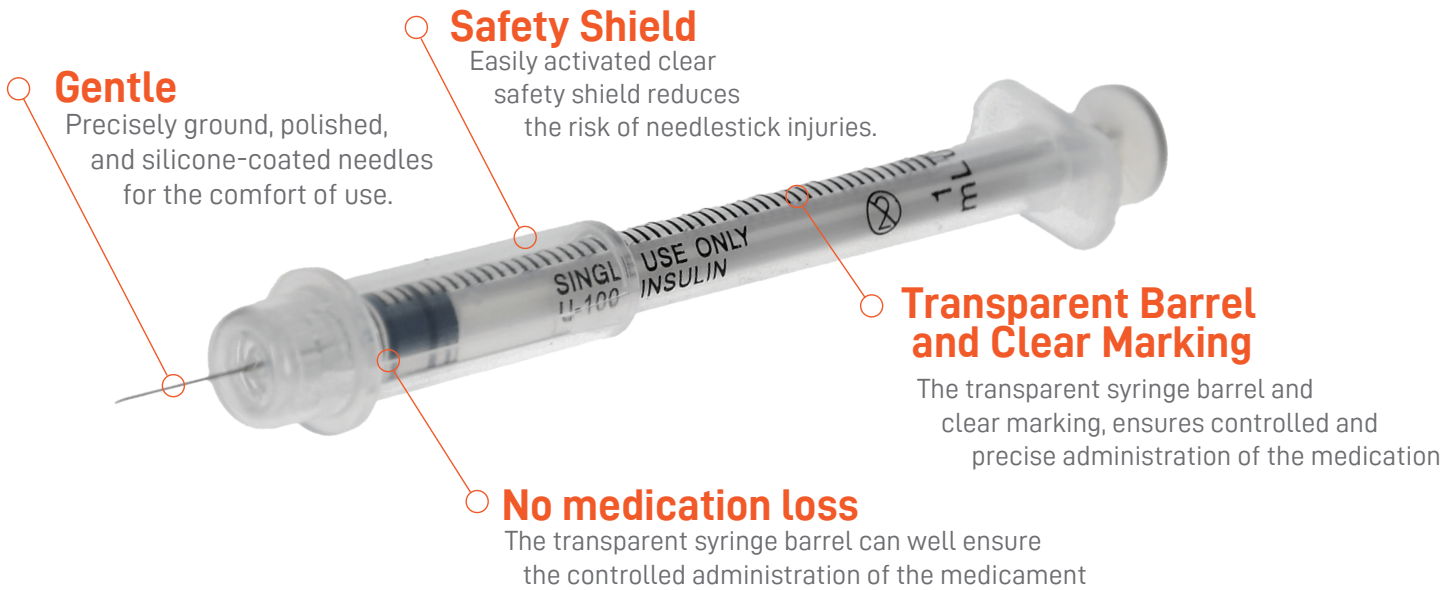


REF	PRODUCT	PACKAGING
2241	GLUCO-CARE [®] Insulin Syringes 0.3ml/cc, 31G x 5/16" (8mm), U-100	100 pcs / bx 30 bx / case
2242	GLUCO-CARE [®] Insulin Syringes 0.3ml/cc, 30G x 5/16" (8mm), U-100	100 pcs / bx 18 bx / case
2247	GLUCO-CARE [®] Insulin Syringes 0.5ml/cc, 31G x 5/16" (8mm), U-100	100 pcs / bx 30 bx / case
2248	GLUCO-CARE [®] Insulin Syringes 0.5ml/cc, 30G x 5/16" (8mm), U-100	100 pcs / bx 30 bx / case
2250	GLUCO-CARE [®] Insulin Syringes 0.5ml/cc, 29G x 1/2" (12.7mm), U-100	100 pcs / bx 18 bx / case
2254	GLUCO-CARE [®] Insulin Syringes 1ml/cc, 31G x 5/16" (8mm), U-100	100 pcs / bx 30 bx / case
2255	GLUCO-CARE [®] Insulin Syringes 1ml/cc, 30G x 5/16" (8mm), U-100	100 pcs / bx 30 bx / case
2256	GLUCO-CARE [®] Insulin Syringes 1ml/cc, 30G x 1/2" (12.7mm), U-100	100 pcs / bx 30 bx / case
2257	GLUCO-CARE [®] Insulin Syringes 1ml/cc, 29G x 1/2" (12.7mm), U-100	100 pcs / bx 20 bx / case
2259	GLUCO-CARE [®] Insulin Syringes 1ml/cc, 27G x 1/2" (12.7mm), U-100	100 pcs / bx 30 bx / case

www.gluco-care.com

GLUCO-CARE[®]

INSULIN SAFETY SYRINGES



Remove the cover



Draw up medicine



Cover for transport



Inject



Shield permanently

Ordering Information

REF	PRODUCT	PACKAGING
2131	GLUCO-CARE [®] Insulin Safety Syringe 29G x 1/2" (0.3mmx12.7mm) - 1 mL	100 pcs / box 20 boxes / case
2132	GLUCO-CARE [®] Insulin Safety Syringe 29G x 1/2" (0.3mmx12.7mm) - 0.5 mL	100 pcs / box 20 boxes / case

www.gluco-care.com

GLUCO-CARE®

GLUCOSE MONITORING SYSTEM



Auto Calibration,
No Coding



Small Blood
Sample 0.7µl



Alternative
Site Testing



14 Days
Average

GLUCOSE
Monitoring System



Test Results
in 5 Seconds



Memory
for 500 Tests



GDH- FAD
Reagent



Strip Ejector



GLUCO-CARE® HS100 Blood Glucose Monitoring System can only be used with GLUCO-CARE® HS100 Test Strips and GLUCO-CARE® Control Solution HS100

Sleek and Slim Design

Sleek and Slim Design for Excellent
Gripping & Operating Experience



Bluetooth Transmission

Provide wireless connection for data
transmission



Test Strip Eject

Reduce the possibility of
cross-contamination
due to bloodborne pathogens



KIT

- > 1 Blood Glucose Meter
- > 10 Blood Glucose Test Strips
- > 1 Adjustable Depth Lancing Device
- > 10 Sterilized Lancets
- > User Manual
- > Protective carrying case
- > Protective carrying case & product illustration box

INFO: The contents of a complete kit are subject to
change depending on the date of purchase.

Certification



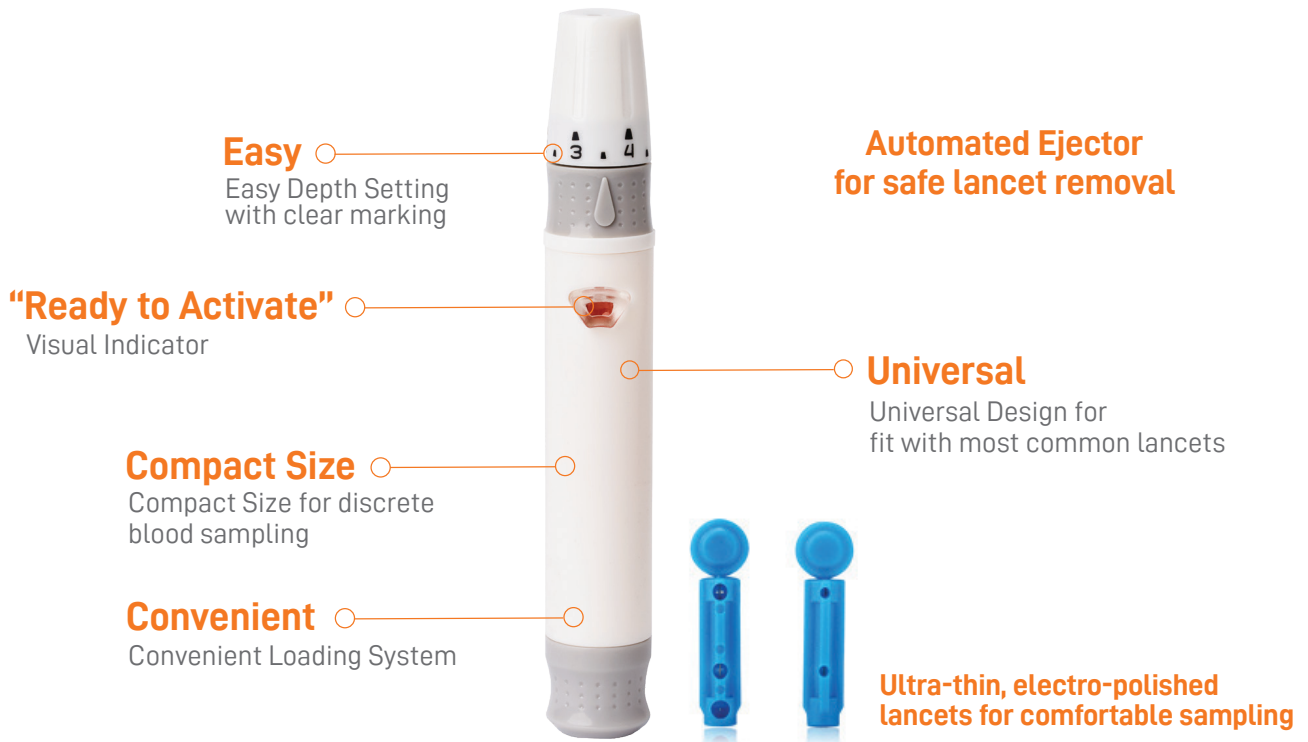
Ordering Information

REF	PRODUCT	PACKAGING
4011	GLUCO-CARE® Blood Glucose Monitoring Kit (meter, 10 lancets, 1 lancing device, case, IFUs)	1 pc / box
4012	GLUCO-CARE® Blood Glucose Test Strips	50 pcs / box 500 pcs / case
4013	GLUCO-CARE® Blood Glucose Monitoring Kit with 10 Glucose Strips	1 pc / box 72 pcs / case

www.gluco-care.com

GLUCO-CARE[®]

LANCING DEVICES
& LANCETS



Remove the Device Cap



Insert a new Lancet Into the Device



Twist off and pull out safety cap of the Lancet



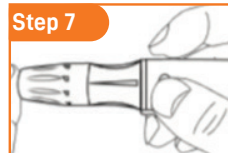
Put the Device Cap back on



Adjust the lancing depth



Load the Device (Click Indicator)



Activate the Device to obtain blood sample



Drive the Lancet into the safety cap



Eject the lancet safely from the device

Ordering Information

REF	PRODUCT	PACKAGING
1210	GLUCO-CARE [®] Universal Lancing Device - 10 Depth Setting	1 pc / box 100 pcs / case
1201	GLUCO-CARE [®] Universal Blood Lancets - 23G	100 pcs / box 10.00 pcs / case
1202	GLUCO-CARE [®] Universal Blood Lancets - 26G	100 pcs / box 10.00 pcs / case
1203	GLUCO-CARE [®] Universal Blood Lancets - 28G	100 pcs / box 10.00 pcs / case
1204	GLUCO-CARE [®] Universal Blood Lancets - 30G	100 pcs / box 10.00 pcs / case
1205	GLUCO-CARE [®] Universal Blood Lancets - 31G	100 pcs / box 10.00 pcs / case
1206	GLUCO-CARE [®] Universal Blood Lancets - 32G	100 pcs / box 10.00 pcs / case
1207	GLUCO-CARE [®] Universal Blood Lancets - 33G	100 pcs / box 10.00 pcs / case

www.gluco-care.com

GLUCO-CARE[®]

SAFETY PEN NEEDLES



Safe

Clear safety shield automatically locks after use to protect the needle

Simple

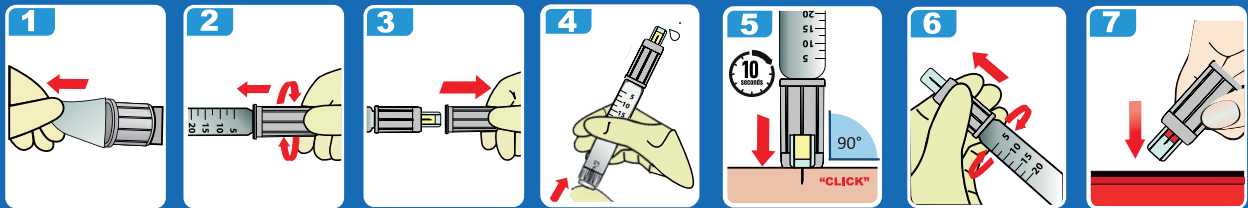
Color indicator becomes invisible after engagement of safety mechanism

Ergonomic Design

Ergonomic main housing with ribs for comfortable grip

Universal

Compatible fit with most pen injectors



CAUTION:

Do not use if the protective seal or the outer cover have been previously removed or damaged.



BEFORE USE

Needle tip is covered by the transparent shield to prevent accidental needle stick.



DURING INJECTION

Needle tip is exposed when the shield is depressed during injection.



AFTER INJECTION

Shield is permanently locked (red mark as activation indicator) to reduce the risk of accidental needle sticks.

Ordering Information

REF	PRODUCT	PACKAGING
3111	GLUCO-CARE [®] Safety Pen Needles 31G x 5mm	100 pcs / box
3112	GLUCO-CARE [®] Safety Pen Needles 30G x 8mm	100 pcs / box

www.gluco-care.com

**GLUCO-CARE**[®]

124 CATALOG

MediVena

1 Glenlake Parkway, Ste 700, Atlanta,
GA 30328, USA

 +1 404 514 2586  info@medivena.com

CUSTOMER SERVICE

TOLL FREE: 888 270 6457

MediVena Sp. z o.o.

Al. Jana Pawła II 27,00-867
Warsaw, POLAND

 +48 736 667 468  info@medivena.com

www.medivena.com

www.gluco-care.com