



MPR-N200H-PA

Pharmaceutical Refrigerator

MPR-N200H-PA

-2°C to +14°C

7.6 cu.ft. | 218 L



The MPR-N200H-PA Pharmaceutical Refrigerator offers a purpose-built, space-saving design engineered to meet prevailing vaccine guidelines. It utilizes energy-saving technologies and a robust, inverter compressor algorithm (ICA) refrigeration system to deliver precise temperature control and uniformity for biologics, vaccine, and reagent storage.

Reliable Uniformity

The refrigerator provides reliable uniformity throughout the cabinet. Temperatures remain stable wherever products are stored, even in a loaded chamber. The refrigerator is engineered to prohibit inadvertent freezing of temperature sensitive vaccines.

Security Control & Monitoring

The microprocessor controller and softkey interface are door mounted at eye level. An OLED alphanumeric display provides convenient, secure user management. Temperature readings can be displayed in single digits or 0.1 increments. Minimum/maximum temperatures can be easily viewed. All alarm conditions are displayed and recorded. Data transfer is available through a USB port.

Efficiency Meets Performance

The PHCbi brand proprietary inverter compressor algorithm [ICA] modulates the compressor motor speed according to temperature need. ICA technology, combined with energy-saving and environmentally friendly natural refrigerants allows the MPR-N200H-PA to produce less heat, lower noise, consume less energy, and not sacrificing performance.



Versatility

This slim design fits in the smallest of footprints available in your workspace. Insulated glass avoids condensation. Optional blackout panel is available to protect light-sensitive products. Installs into a standard electrical outlet. Four adjustable shelves provide maximum storage flexibility.



Easy to Use, Intuitive Operation

Adjustable audible and visual alarms are standard, along with integrated system diagnostics and predictive performance supervision. The control panel has password protected capabilities which can help reduce the risk of accidental changes in the set point. Data archiving with minimum/maximum temperature readings support CDC clinical recording recommendations.



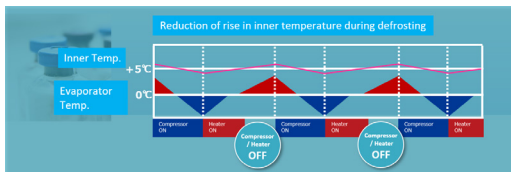
Natural Refrigerants

Hydrocarbon refrigerants help achieve facility sustainability objectives by minimizing any environmental impact without compromising cooling performance, ambient tolerance and recovery speeds following door openings.

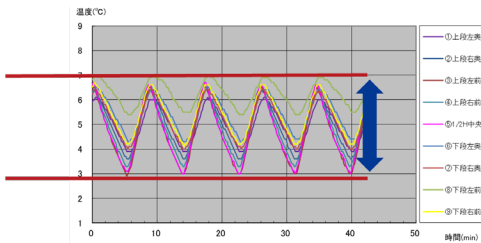


MPR-N200H-PA

Cycle Defrost

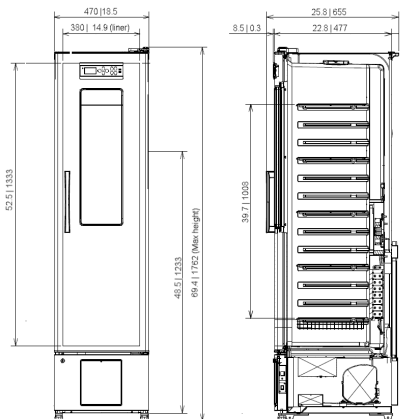


AT23°C SV 5° 9 Points



Dimensions

Unit : inch | mm



PHC Corporation of North America
1300 Michael Drive, Suite A, Wood Dale, IL 60191
Toll Free USA (800) 858-8442, Fax (630) 238-0074
www.phchd.com/us/biomedical

Model Number		MPR-N200H-PA
External Dimensions (W x D x H) ¹⁾	inches mm	18.2 x 22.9 x 68.3 460 x 580 x 1735
Internal Dimensions (W x D x H)	inches mm	14.9 x 18.75 x 52.4 380 x 477 x 1333
Volume	cu.ft. liters	7.6 218
Net Weight	lbs kg	141 64
Performance		
Uniformity		+/-3
Temperature Control Range (Pre-set) ²⁾	°C	+2 to +14
Power Consumption	kWh/Day	1.73
Btu Nominal	Per Hour	358
Noise Level ³⁾	dB(A)	40
Ambient Temperature Operating Range	°C	-5 to +35
Control		
Controller		Microprocessor with non-volatile memory
Temperature Display	°C	Digital (white graphic OLED), 1 (increment of 0.1)
Controller Security ⁴⁾		Lockable with Keypad
Temperature Sensor		Thermistor
Refrigeration		
Cooling Method		Forced air circulation
Defrost Method		Cycle defrost
Refrigerant		R-600a (60g)
Insulation		PUF (CFC/HFC Free)
Construction		
Exterior Material		Colored Steel
Interior Material		ABS Resin
Outer Door	qty	Solid Swing Door with insulated glass
Outer Door Lock		1
Shelves	qty	4 Upper 1 Lower
Shelf Dimensions (W x D)	inches mm	Upper Shelves: 12.8 x 13.3 326 x 339 Bottom Shelf: 11.8 x 11.8 300 x 300
Max. Load per Shelf	lbs kg	Upper and Bottom: 44 20
Access Port, Qty, Position Diameter		1 x 1.2" (30mm) 1 rear
Casters Leveling Legs	qty	4 (2 leveling legs)
Interior Light		LED
Alarms (V = Visual Alarm, B = Buzzer Alarm, R = Remote Alarm, A = Adjustable, L = Logged)		
Power Failure ⁵⁾		R
High and Low Temperature		V-B-L-R-A
Air Circulation Alarm		V-B-L-R-A
Door Open		V-B
Electrical		
Power Supply		NEMA 5-15P 115V 60 hz 8ft cord length
Running Amps / Max Amps		1.8 2.8
Options		
Circular Type Chart Recorders		MTR-G04A-PA
Chart Paper		RP-G04-PW
Ink Pen		PG-R-PW
Battery Kit For Power Failure Alarm	1	MPR-48B2-PW
Blackout panel with opaque tinting	1	MPR-25BP-PW
Shelves (additional)		MPR200SLF
Optional Communication Systems		
Wireless, Cloud-Based, Automatic Data Management		LabSVIF™(Gen 2) Lab Alert®* V-SafeRX*
4-20mA output module		MTR-420MA-PW MTR420MAC- Self Powered* MTRCMAL- Loop Powered*
Quality Management System		
Certification		QPS Listed
Warranty ⁶⁾		3 years parts and labor

¹⁾ Exterior dimensions of main cabinet only, excluding external projections. See dimensions drawings on the website for full details.
²⁾ Air temperature measured at refrigeration compartment center and corner, ambient temperature +23, no load.
³⁾ Nominal value - background noise 20 dB(A).
⁴⁾ Most models have password protection settable keypad locks.
⁵⁾ Remote alarm activates at power failure, for messaging and logging must purchase accessory MPR-48B2-PW (B-L-V alarm).
⁶⁾ Current warranty offered at time of printing and may be subject to change; US and Canada only.

Specifications are subject to change without notice.
For latest specification information contact PHC Corporation of North America at info@us.phchd.com.
Performance data herein is based on independent testing at time of publication.