

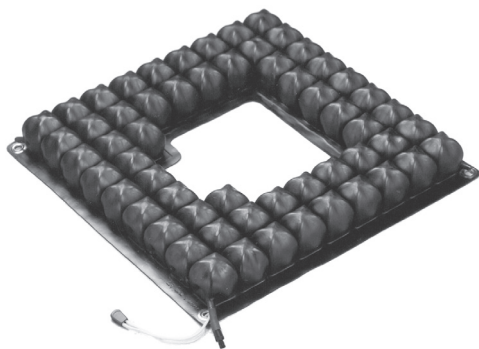
ROHO®

Shower/Commode Cushion

Toilet Seat Cushion

THE ADAPTOR® PAD

Operation Manual



permobil

s h a p e f i t t i n g t e c h n o l o g y®

Contact Information



ROHO, Inc.
1501 South 74th St.
Belleville, IL 62223 U.S.A.

U.S.A.:
1-800-736-0925
Fax 1-888-551-3449

Customer Support:
orders.roho@permobil.com

Outside the U.S.A.:
+1 618-277-9150
Fax +1 618-277-6518
intlorders.roho@permobil.com
permobil.com



Warning

Indicates that not following the specified procedure could lead to potentially hazardous conditions resulting in serious injury.



Caution

Indicates that not following the specified procedure could lead to potentially hazardous conditions resulting in minor to moderate injury or damage to the equipment or other property.

Incident Reporting

In the event of a serious incident or injury, contact Customer Support and the competent authority of the State in which the user and/or patient is established.

Contents

Intended Use	2
Important Safety Information	2-3
Parts Detail	4
Product Specifications	
THE ADAPTOR	
Shower/Commode Cushion	5
Toilet Seat Cushion	
Cleaning and Disinfecting	6-7
Troubleshooting	8
Storage, Transport, Disposal and Recycling	
Warranty	

Español	9	Svenska	57
Français	17	Norsk	65
Deutsch	25	Suomi	73
Italiano	33	Português	81
Nederlands	41	Polski	89
Dansk	49	Hrvatski	97

Symbols Glossary



Manufacturer



Quantity



Front of product



Size (width x depth x height)



Date of manufacture



Model number



Back of product



Medical Device



Consult instructions for use



Serial number



Bottom of product



No weight limit, if sized to user



European Authorized Representative



Swiss Authorized Representative



Unique Device Identifier

Please Note

Supplier: This manual must be given to the user of this product.

Operator (Individual or Caregiver): Before using this product, read the instructions and save for future reference.

Products may be covered by one or more U.S. and foreign patents and trademarks, including ROHO®, DRY FLOATATION®, THE ADAPTOR®, Yellow Rope® and shape fitting technology®. Zytel® is a registered trademark of DuPont.

Product information is changed as needed; current product information is available at permobil.com.

Contact Customer Support for previous versions of product information.

ROHO, Inc. is part of Permobil.

© 2007, 2025 Permobil

Rev. 2025-06-04

Intended Use

The ROHO Shower/Commode Cushion (Shower/Commode Cushion) is an adjustable, air-filled, cellular-design, support surface that utilizes DRY FLOATATION technology and is intended for short-term cushioning needs on bedside commodes and shower chairs to provide skin/soft tissue protection. There is no weight limit.

The ROHO Toilet Seat Cushion (Toilet Seat Cushion) is an adjustable, air-filled, cellular-design, neoprene surface intended for short-term cushioning needs on toilets and portable bedside commodes. There is no weight limit.

THE ADAPTOR PAD (THE ADAPTOR) is an air-filled, cellular-design, neoprene surface intended for cushioning and shock absorption needs and reduction of friction on surfaces, such as a wheelchair frame, headrest, armrest, or footrest, to provide skin/soft tissue protection. There is no weight limit.

Contraindication: THE ADAPTOR is not intended to be used as a supporting medium under the buttocks.

An experienced clinician should determine whether the product is appropriate for the individual's particular equipment needs. The product's intended use statement alone should not be relied upon to make that determination.

The medical products featured in this document are intended to be only one part of an overall care regimen that includes all therapeutic equipment and interventions. An experienced clinician should identify this care regimen after evaluating the individual's physical needs and overall medical condition.

A clinician should also evaluate for visual, reading, and cognitive impairment to determine the need for caregiver assistance or the need for other assistive technology, such as large-print instructions, to ensure proper product use.

Important Safety Information



Warnings:

- Skin/soft tissue breakdown can occur due to a number of factors, which vary by individual. Check skin frequently, at least once a day. Redness, bruising, or darker areas (when compared to normal skin) may indicate superficial or deep tissue injury and should be addressed. If there is any discoloration to skin/soft tissue, STOP USE immediately. If the discoloration does not disappear within 30 minutes after disuse, immediately consult a clinician.
- DO NOT use an under-inflated or over-inflated cushioning device because the product benefits will be reduced or eliminated, resulting in an increased risk to skin and other soft tissue. If the cushioning device does not appear to be holding air, or if unable to inflate or deflate the cushioning device, see "Troubleshooting". Immediately contact the clinical caregiver, distributor, or Customer Support if the problem persists.
- DO NOT modify the product or use non-compatible accessories or components, which may result in product damage or failure and will void the warranty.

Important Safety Information, continued



Warnings:

- If unable to perform any tasks described in this manual, seek assistance by contacting the clinician, equipment provider, distributor, or Customer Support.
- Periodically, check the product for damage, and replace if necessary.
- DO NOT place obstructions or non-compatible accessories between the individual and the cushion. The cushion and any compatible accessories must be correctly sized and MUST be used as directed in this manual. Except as indicated in this manual, placement of any items between the individual and the cushion: 1) may reduce or eliminate the benefits of the cushion, increasing the risk to skin or to other soft tissue, and 2) may cause the individual to become unstable and vulnerable to falling.
- DO NOT use the cushion on top of, or in conjunction with, any other products or materials, except as indicated in this manual. Using non-compatible products or materials: 1) may reduce or eliminate the benefits of the cushion, increasing the risk to skin or to other soft tissue, and 2) may cause the individual to become unstable and vulnerable to falling.
- DO NOT expose the product to high heat, open flames or hot ashes. Testing or certification claims, including for flammability, may no longer apply to this device when it is combined with other products or materials. Check testing and certification claims for all products used in combination with this device.
- The cushion surface will acclimate to the surrounding temperature. Take appropriate precautions, especially when the cushion will contact unprotected skin.
- Use caution when skin will contact the seating surface. Tissue damage may result from increased friction.
- Use caution when handling the cushioning device: Metal grommets on the corners may be a finger trap hazard.
- DO NOT use the cushioning device as a water flotation device (e.g., a Life Preserver). It will NOT support the body in water.



Cautions:

- Keep the cushioning device away from sharp objects.
- DO NOT allow the cushioning device to come into contact with oil-based lotions or lanolin. They may degrade the material.
- Changes in altitude may require adjustment to a DRY FLOATATION cushioning device.
- Prolonged exposure to ozone may degrade materials used in the cushioning device, affect the performance of the product, and void the product warranty.
- DO NOT use any valve, air cell, or strap as a handle for carrying or pulling the product. Grasp the product by the base or the outside edges.
- If a DRY FLOATATION cushioning device has been in temperatures lower than 32°F (0°C), and exhibits unusual stiffness, allow the cushioning device to warm to room temperature.
- Do not use a pump, cover or repair kit other than those compatible with the product.

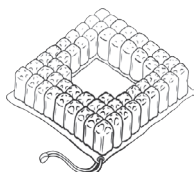
Parts Detail

Package Contents: All products featured in this manual include an operation manual. All products except THE ADAPTOR include a hand pump and repair kit.

To order replacement parts, contact the equipment provider or Customer Support.

The serial number is located on the bottom of the cushion.

Shower/Commode Cushion

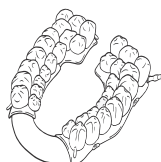


Hand Pump



Repair Kit

Toilet Seat Cushion



THE ADAPTOR



Product Specifications

Materials: Cushioning devices: neoprene rubber (made without latex); Zytel valves; straps and snaps

Toilet Seat:

height range: 1 - 2¼ in. (2.5 - 5.5 cm); width: 7¼ in. (20cm); depth: 15¼ in. (40 cm); weight: 1¼ lb. (0.5 kg)

Shower/Commode Seat:

height: 2¼ in. (5.5 cm); width range: 14¼ - 18¼ in. (37.5 - 46.5 cm); depth range: 14¼ - 18¼ (37.5 - 46.5 cm); average weight (based on mid-sized cushioning device): 2 lb. (1 kg)

Made-to-order covers for the Toilet Seat Cushion and Shower/Commode Cushion: Not available in all markets. Refer to the cover care label for material content and for compliance to flammability requirements.

THE ADAPTOR:

height: 1 in. (2.5cm); width: 9¼ in. (23.5cm); depth: 13 in. (33cm); weight: ½ lb. (0.2kg)

1 in. = 2.54 cm = 25.4 mm

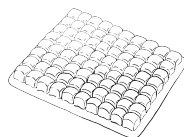
Contact Customer Care for specifications.

Cushion expected lifetime: 5 years

THE ADAPTOR

Warning: Air cells that have been cut will not provide cushioning.

- Fit:** Use scissors to trim THE ADAPTOR to fit where needed (sides of wheelchairs, trays, head rests, foot rests, etc.) Cut between the sealed air cells when possible.
- Attach:** To attach the product to the surface, use hook and loop fastener strips



Note: Hook/loop fastener strips are not included. They are available upon request.

Shower/Commode Cushion and Toilet Seat Cushion

Warnings:

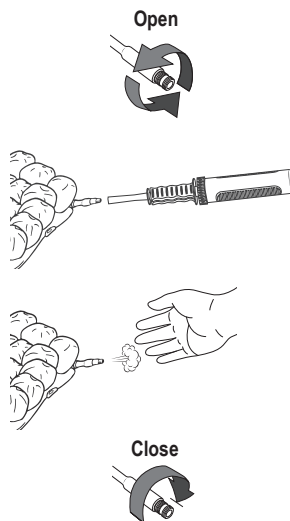
- There should be no contact between the individual and the base of the cushion. If there is contact, add air. The recommended space between the base of the cushion and the individual is approximately ½ in. (13 mm).
- Use caution when skin will contact the seating surface. Tissue damage may result from increased friction.
- To ensure stability, use the straps/snaps to secure the Toilet Seat Cushion to the surface.

Inflate to atmospheric pressure:

 **Warning:** DO NOT place any weight on the cushion during atmospheric inflation.

Notes: To open, turn at least one full rotation. Use the hand pump nozzle to open the inflation valve.

1. Open the inflation valve. Inflate with the hand pump until all of the air cells feel firm.
2. Remove the hand pump. Leave the inflation valve OPEN.
3. Allow air to escape from the inflation valve. Listen (or place a hand in front of the inflation valve) to see if the airflow has stopped.
4. After the airflow has stopped, CLOSE the inflation valve completely. The cushion is now inflated to atmospheric pressure.



Place the cushion:

5. Place the cushion on the surface, air cells facing up.
6. Toilet Seat Cushion only: Use the straps and snaps to secure the cushion to the surface.
7. Confirm correct placement of the cushioning device.

Transfer and adjust, if needed:

8. The individual should transfer to the product, sitting in their usual position.
9. Adjust the inflation level if needed:

Not enough air: If there is contact between the individual and the base of the cushion, add air.

Too much air: If the cushion feels uncomfortable or unstable and the air cells feel very firm, remove a small amount of air until the product feels comfortable and stable.

Cleaning and Disinfecting



General Warnings:

- Cleaning and disinfecting are separate processes. Cleaning must precede disinfection. If the product becomes soiled, or between use by different individuals: clean, disinfect, and check the product for proper functioning.
- Clean the product regularly and when it becomes soiled.
- If a made-to-order cover is being used with the Toilet Seat Cushion or Shower / Commode Cushion, remove it before cleaning / disinfecting, and replace it only when the cushion is completely dry. *Note: Covers are not available in all markets.*
- Follow all manufacturer bleach container and germicidal disinfectant safety guidelines.
- Note about sterilization: High temperatures accelerate aging and will damage the product assembly. The products featured in this manual are not packaged in a sterile condition, nor are they intended or required to be sterilized prior to use. If institution protocol demands sterilization: First, follow the cleaning and disinfecting instructions; then, open the inflation valve and use the lowest possible sterilizing temperature, but not to exceed 158°F (70°C), for the shortest time possible. DO NOT autoclave.



Cushion Care Cautions: Use of the following may cause damage to the cushion: abrasives (steel wool, scouring pads); caustic, automatic dishwasher detergents; cleaning products that contain petroleum or organic solvents, including acetone, toluene, Methyl Ethyl Ketone (MEK), naphtha, dry cleaning fluid, adhesive remover; oil-based lotions, lanolin; ozone gas; ultraviolet light cleaning methods. DO NOT expose to direct sunlight.



Warning: DO NOT allow water or cleaning solution to enter the cushion. Make sure the inflation valve is closed. *(Does not apply to THE ADAPTOR.)*

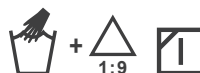
Note: Deflated air cells may be easier to thoroughly clean. To deflate the air cells: with the inflation valve open, roll up and/or compress the cushion, and then completely close the inflation valve. (Does not apply to THE ADAPTOR.)

Hand Wash and Hand Disinfect the Cushion (Preferred Method)

Hand Wash the Cushion: Close the inflation valve. *(Does not apply to THE ADAPTOR.)* Place in a large sink. Hand wash, using mild liquid hand soap, hand dishwashing liquid, laundry detergent, or a multipurpose detergent (follow product label instructions.) Gently scrub all cushion surfaces, using a soft plastic bristle brush, a sponge or a cloth. Rinse with clean water. Air dry.



Hand Disinfect the Cushion: Follow the cleaning instructions, using 1 part household liquid bleach per 9 parts water. Follow the safety guidelines on the bleach product label. Keep the product wet with the bleach solution for 10 minutes. Rinse thoroughly with clean water. Air dry.



Recommendation: When washing by hand, use room-temperature water.



Caution: Rinse thoroughly. Detergent residue may cause air cells to stick together