



# SPEC SHEET

## KoolMore 60 in. Commercial Chest Freezer 15.9 cu ft.

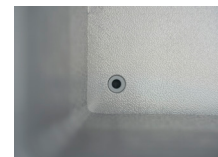
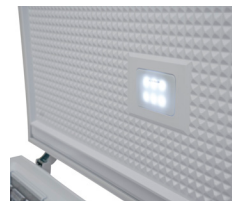
SKU: SCF-16C

### FEATURES

- All-purpose deep freezer chest has a deep, wide-open design that offers nearly 16 cu. ft. of space
- Certified by ETL to NSF 7 standards to ensure safe working temperatures and conditions
- Smooth-rolling caster wheels: seamlessly attached to the underside of our deep freezer chest are caster wheels that allow you to move your unit effortlessly around a garage, mudroom, or commercial storage area
- Lockable lid design: a heavy-duty built-in lock with key to prevent, tampering, or unauthorized access
- Maintains temperature between 0°F to -18°F
- Eco-friendly R290 refrigerant
- 2-wire storage baskets (movable)
- Hertz: 60, voltage: 110
- Manual defrost



### CLOSE UP IMAGES



# TECHNICAL SPECS

## Dimensions

Length	60.43
Width	29.13
Height	32.48
Interior Depth	21.5
Interior Width	54.2
Interior Height	24.5
Depth Including Handles	31.1
Depth Excluding Handles	29.4
Depth Less Door	27.6
Height To Top Of Door Hinge In	31.6
Power Cord Length	70.8
Minimum Side Air Clearance In	4 in.
Minimum Back Air Clearance In	4 in.

## Capacity

Weight Lbs	139
Net Cubic Feet	15.4
Individual Bin Capacity	22lbs
Number Of Freezer Baskets Bins	2

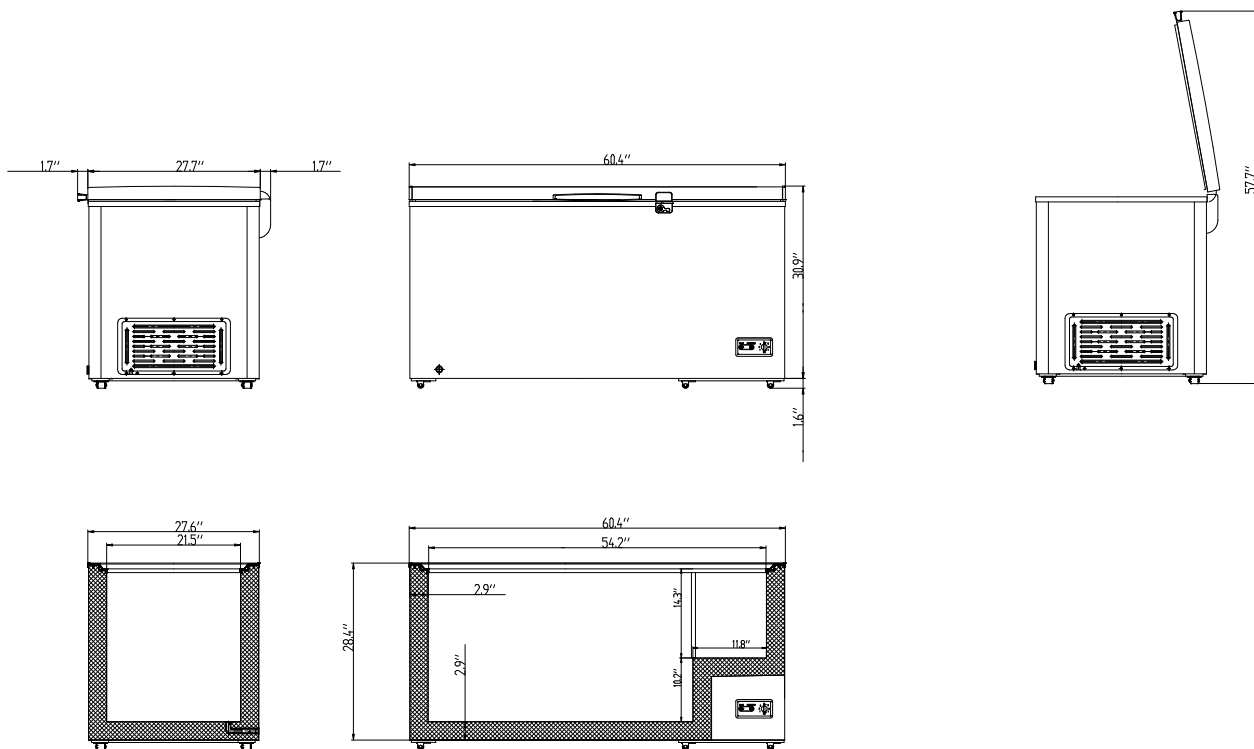
## Features & Materials

Door Style	Vertical Swing
Number Of Doors	1
Defrost Type	Manual
Refrigerant Type	R-290
Temperature Control Type	Mechanical
Ambient Temperature Range	0-100 F
Temperature Range	-15-41 F
Casters	6
Color Finish	White
Color Door Handles	White
Exterior Material	Durable White Powder Coated Steel
Interior Material	Embossed Aluminum
Door Material	Powder Coated Steel
Noise	52 db
Hinge Location	Back of Unit
Interior Lights	LED

## Electric & Certifications

Phase	1
Plug Type	NEMA 5-15P
Voltage	110
Hertz	60
Wattage	215
Certifications	ETL Listed for Safety and Sanitation

# Plan View



## CERTIFICATIONS



706 Eastern Parkway STE 1G, Brooklyn NY 11213  
718-576-6342  
info@koolmore.com