



Service & Maintenance manual – TR900

Incl. spare parts lists & maintenance checklist

This maintenance and service manual covers TR900 bath tubs equipped with Linak actuator and with serial numbers from 1705-203932-01 (2017) and onwards.



The recommended frequency of the maintenance procedures will depend on how often the equipment is used, the hardness and quality of the water supplied at place of installation.

It is good practice to establish these routine procedures on a weekly basis and adjust the frequency based on usage of the equipment.



Table of content

Table of Content	Page
Product description	3
Before every use	4
Daily maintenance	4
Monthly maintenance	5
Annual maintenance	6
Maintenance, Every 3 years	8
Maintenance, Every 5 years	9
Maintenance, 12 years	11
Warranty	11
Wiring diagram 230V, TR900, C, CW	12
Wiring diagram 230V, TR900A, CA, CWA	13
Wiring diagram 115V, TR900, C, CW	14
Wiring diagram 115V, TR900A, CA, CWA	15
Trouble shooting TR900, C, CW	16
Trouble shooting TR900A, CA, CWA	21
Spare parts lists	22
Check list, maintenance and service	32
Maintenance and service record	41



Product description:

TR900	Bathtub without options.
TR900C	Bathtub equipped with Cleaning system.
TR900CW	Bathtub equipped with Cleaning system and Whirlpool pump.
TR900A	Bathtub equipped with Autofill.
TR900CA	Bathtub equipped with Cleaning system and Autofill.
TR900CWA	Bathtub equipped with Cleaning system, Whirlpool pump and Autofill.



Before every use:

Visual inspection:

- Make sure that the bathtub stands securely on the floor.
- Make sure that the tub is in its lowest position.
- Make sure that the tub is in level when raising and lowering the tub.
- Make sure there are no nicks or cracks on the tub which may scratch the patient.
- Make sure that all electrical cords are in good condition and without damages.
- Make sure that the connecting- and shower hoses do not leak.
- Check the water temperature by hand or with a bath thermometer.
Maximum temperature is specified in the manual for the thermostatic mixer.

Daily maintenance:

- Clean the tub after every use. Avoid abrasive cleaners which may scratch the surface of the tub and side covers.
- When the tub is not in use, lower the tub to its lowest position and make sure all valves are closed.
- Clean the strainers on the shower handle by rubbing it with your thumb.
- Visually inspect the tub interior to make sure there are no knicks or cracks which may scratch the patient.



If the TR900 bathtub is equipped with Cleaning system:

- Make sure there is cleaning liquid in the container.
- Clean the strainers on the cleaning shower handle by rubbing it with your thumb.





Monthly maintenance:

- Monthly maintenance must be performed by On-site engineer or trained staff.
- Repeat **Before every use** and **Daily maintenance**.
- Check all screws and bolts inside the back cover.
- Make sure that the supply hoses for Hot- and Cold water are fitted correctly and do not leak.
- Make sure that the power cord is in good condition and has no damages.

Thermostatic mixer

- Exercise the thermostatic mixing valve by moving the temperature control rapidly from cold to hot and hot back to cold several times, pausing at each extreme.
- For maintenance of the thermostatic mixer, read manual from the supplier of the thermostatic mixer (manual enclosed at delivery).
- Contact your TR Equipment representative if you need new manuals.

Warning:

Scalding risk when flushing with hot water!

Important:

Shower hoses on the TR900 bathtub
manage 60°C /140°F for 10 minutes.

Note:

The recommended frequency of these maintenance procedures will depend on the hardness of your water supply and how often the equipment is used. It is good practice to establish these routine procedures on a weekly basis and then adjust the frequency as your conditions indicate



Annual maintenance and inspection:

- Annual maintenance and inspection must be performed by Qualified staff authorized by the manufacturer or together with qualified electrician and plumber.
- Repeat **Before every use, Daily maintenance** and **Monthly maintenance**.
- Inspection according to local requirements of the electrical installation, power cord, earth cables and equipment must be performed by a qualified electrician.
- Inspection of the plumbing installation, flexible connection hoses, shower hoses, vacuum breakers, check valves etc. must be performed by a qualified plumber. Replace if necessary.
- Make a scalding test by shutting OFF the cold-water supply. The thermostatic mixer shall shut OFF if only HOT water is supplied.
If it doesn't shut OFF the mixer or cartridge must be replaced.

Autofill:

- If your TR900 is equipped with an Autofill function perform a function test according to the instructions in the Operating manual. See table of content in the Operating manual and read the Autofill chapter to see how it works.

Cleaning function:

- If your TR900 is equipped with Cleaning function perform a function test. Start the cleaning function by turning the key on the side of the back cover counterclockwise and make sure that cleaning detergent and water is mixed properly. Turn the key on the Clockwise to turn it OFF.
- Verify that the check valve works OK.

Warning:

Never use the cleaning function on the patient!



Annual maintenance:

Depending on the hardness of the water at place of installation TR Equipment recommends that following parts shall be replaced within 1-3 years.

Tub filling:

- Replace the Valve stem (art.no: 829311) on the Open/Close valve.

Shower unit:

- Replace the Valve stem (art.no: 829307) on the Open/Close valve.
- Replace the check valve (art.no: 829080) between the vacuum breaker and shower hose.
- Replace the “repair kit” on the vacuum breaker.

Cleaning unit (if your bathtub has this option):

- Replace the Valve stem (art.no: 829307) on the Open/Close valve for the Cleaning system if your TR900 bathtub is equipped with this option.
- Replace the check valve (art.no: 829080) between the injector and vacuum breaker.
- Replace the “repair kit” on the Vacuum breaker.

Installation kit (Supplied as standard from April 2020):

- Replace the check valves (art.no: 829066).



Installation kit, cleaning (Supplied as standard from April 2020):

- Replace the check valve (art.no: 820495-0127).





Maintenance every 3 year:

- Repeat before every use, daily maintenance, monthly maintenance and annual maintenance.

TR Equipment recommends that following parts shall be replaced during the 3 years maintenance:

Tub filling:

- See recommended parts annual service.

Shower unit:

- See recommended parts annual service.
- Replace the White shower hose (art.no: 829097) and shower handle (art.no:829171).

Cleaning unit (if your bathtub is equipped with this option):

- See recommended parts annual service
- Replace the Yellow cleaning hose (art.no: 829096) and shower handle (art.no:829171).

Installation kit (Supplied as standard from April 2020):

Replace the check valves (art.no: 829066).



Installation kit, cleaning (Supplied as standard from April 2020):

- Replace the check valve (art.no: 820495-0127).





Maintenance every 5 year:

Repeat **before every use, daily maintenance, monthly maintenance and annual maintenance.**

For maintenance of critical components on the thermostatic mixer, see enclosed manual from the manufacturer of the RADA thermostatic mixer (manual enclosed at delivery)

TR Equipment recommends that following parts shall be replaced during the 5 years maintenance:

Tub filling:

- Replace the tub filling valve (art.no: 829293).

Shower unit:

- Replace the Open/Close valve incl. valve stem (art.no: 829288).
- Replace the vacuum breaker (art.no: 829069).
- Replace the check valve (art.no: 829080) between the vacuum breaker and shower hose.

Important information regarding the Thermostatic mixer!

In healthcare applications such as hospitals, residential care homes, etc. and in any other applications where the user is similarly at risk, irrespective of supply and usage conditions or the evidence of in-service tests. TR Equipment recommends the critical components replaced at intervals of **no more than 5 years.**



Maintenance every 5 year:

Other parts:

- Replace both Hot and Cold connecting flexible hoses (art.no: 7426193).
- Replace the cartridge on the thermostatic mixer (art.no: 829067-02).

Options:

Cleaning unit (if your bathtub is equipped with this option):

- Replace the complete cleaning unit (art.no. 200015) incl. vacuum breaker, Open/close valve, injector, and check valve).

Autofill:

- Replace the solenoid valves for shower (art.no: 829180) and tub filling (art.no: 829181).



Maintenance after 12 years:

- TR Equipment recommends replacement of the linear actuator (art.no: 815001) and gas spring (art.no:850192-02).

Warranty:

- Maintenance and/or repairs may only be carried out by the manufacturer or qualified staff authorized by the manufacturer. Otherwise warranty expires immediately.

Important information:

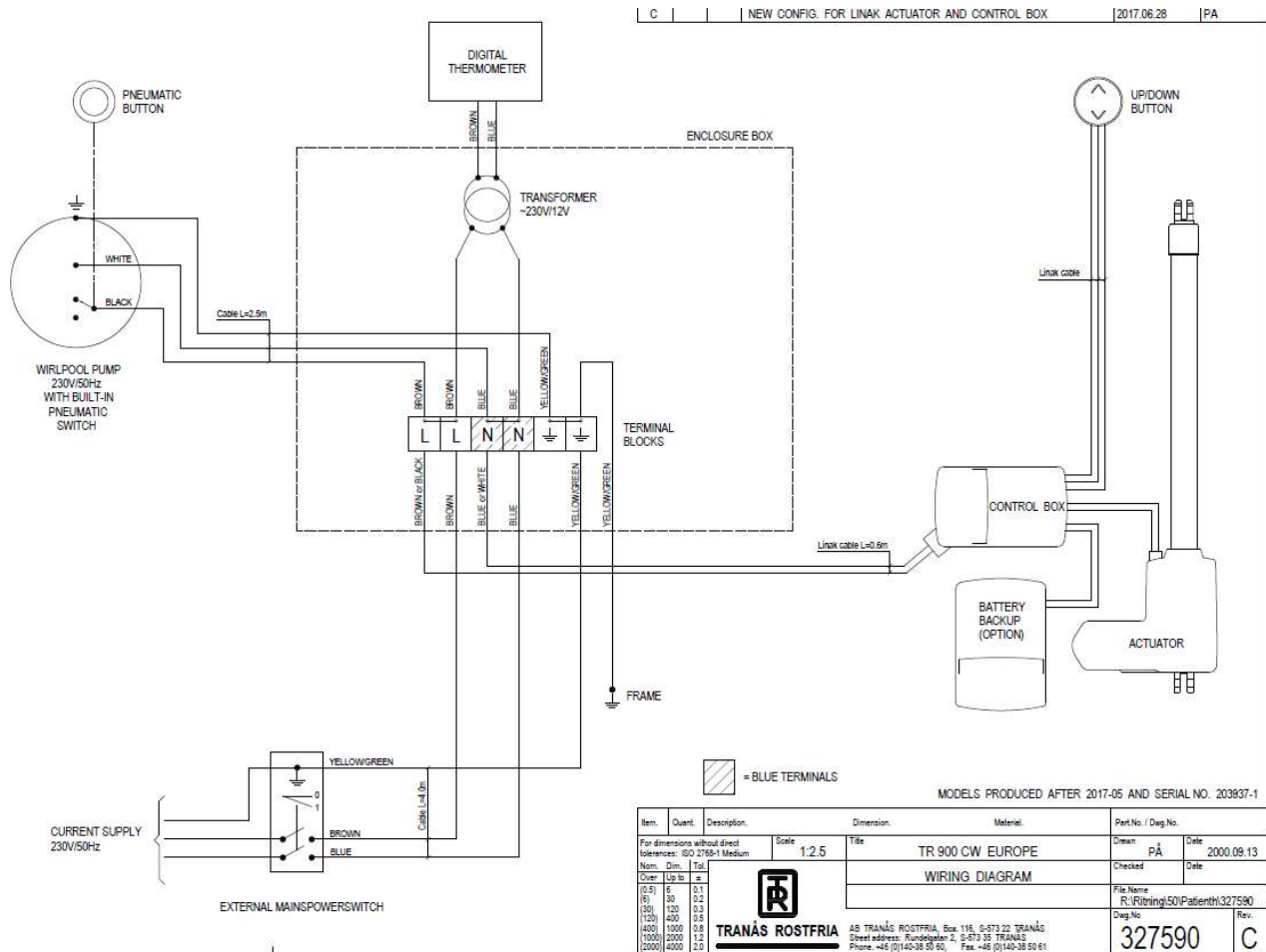
- Iodine, Hydrogen peroxide, Bromine and Methylene blue might discolor the bathtub.
- Mechanical parts inside the tub are maintenance free.

Warning:

The equipment shall not be used in any way that varies from the safety precautions and operating procedures described in the Operating manual. The equipment shall not be operated by anyone until the user has read and understands the Operating manual.



230V Wiring diagram TR900, C, CW:

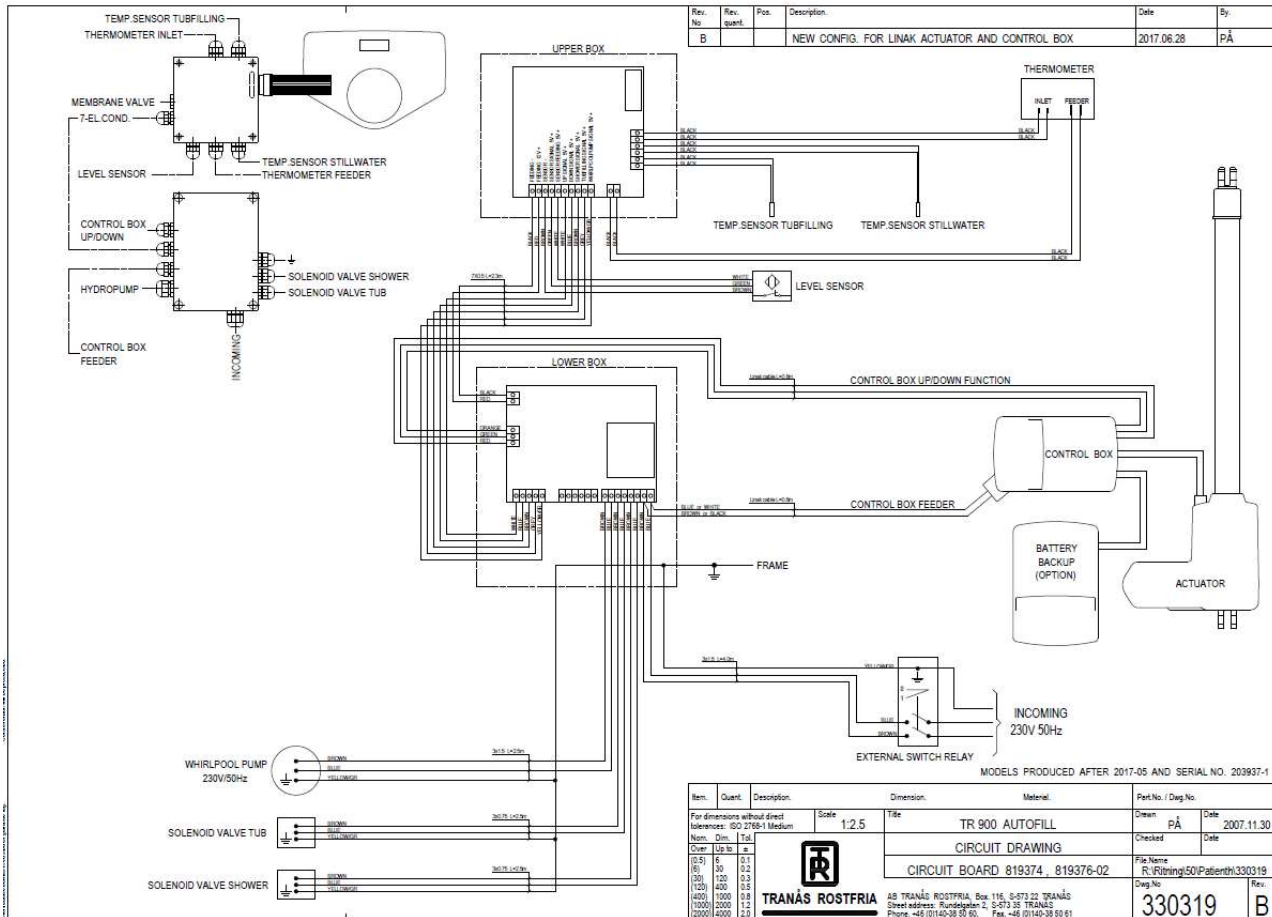


Note:

If your TR900 bathtub is not equipped with Whirlpool pump ignore the wiring diagram for the Whirlpool pump.



230V Wiring diagram Autofill TR900A, CA, CWA

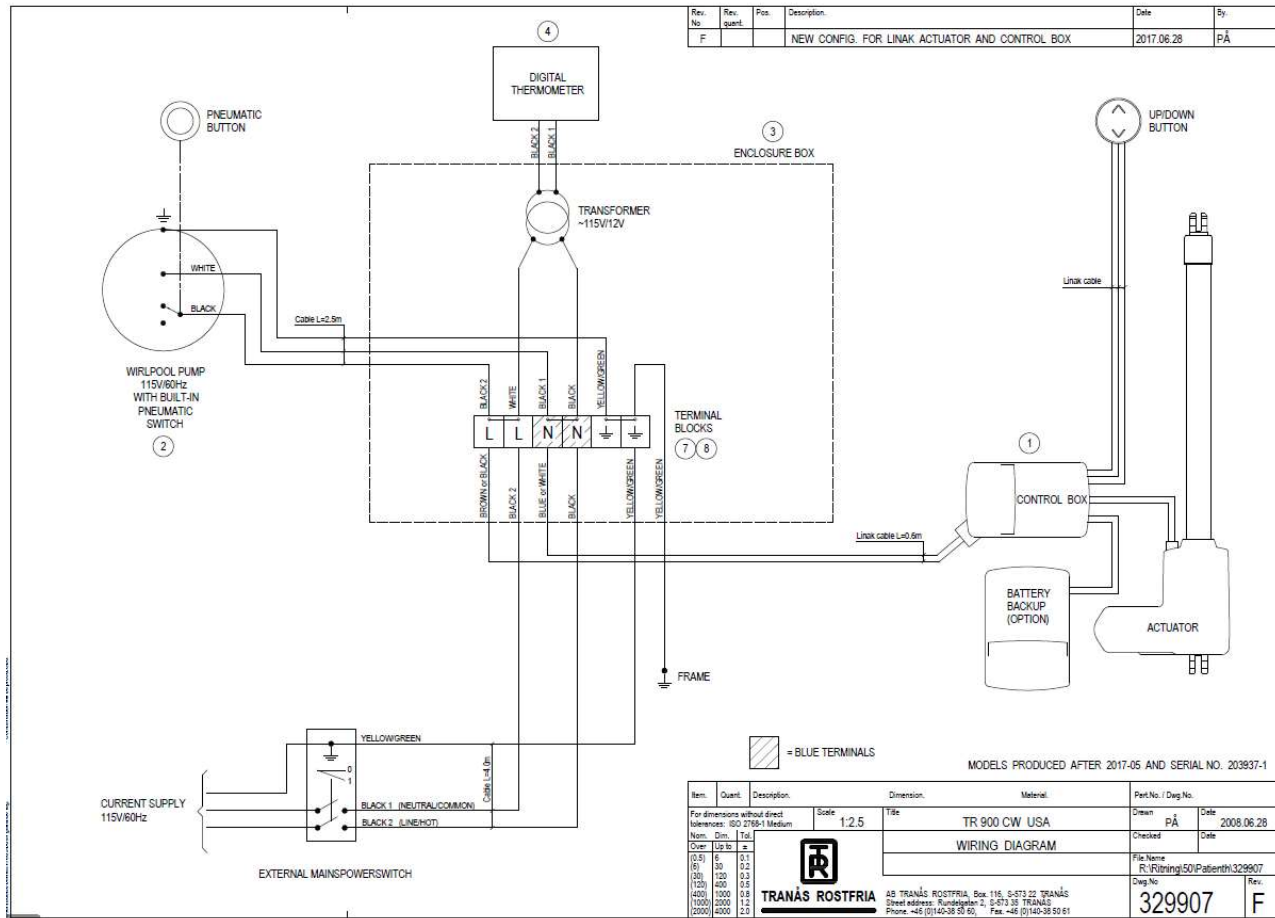


Note:

If your TR900 bathtub is not equipped with Whirlpool pump ignore the wiring diagram for the Whirlpool pump.



115V Wiring diagram TR900, C, CW:

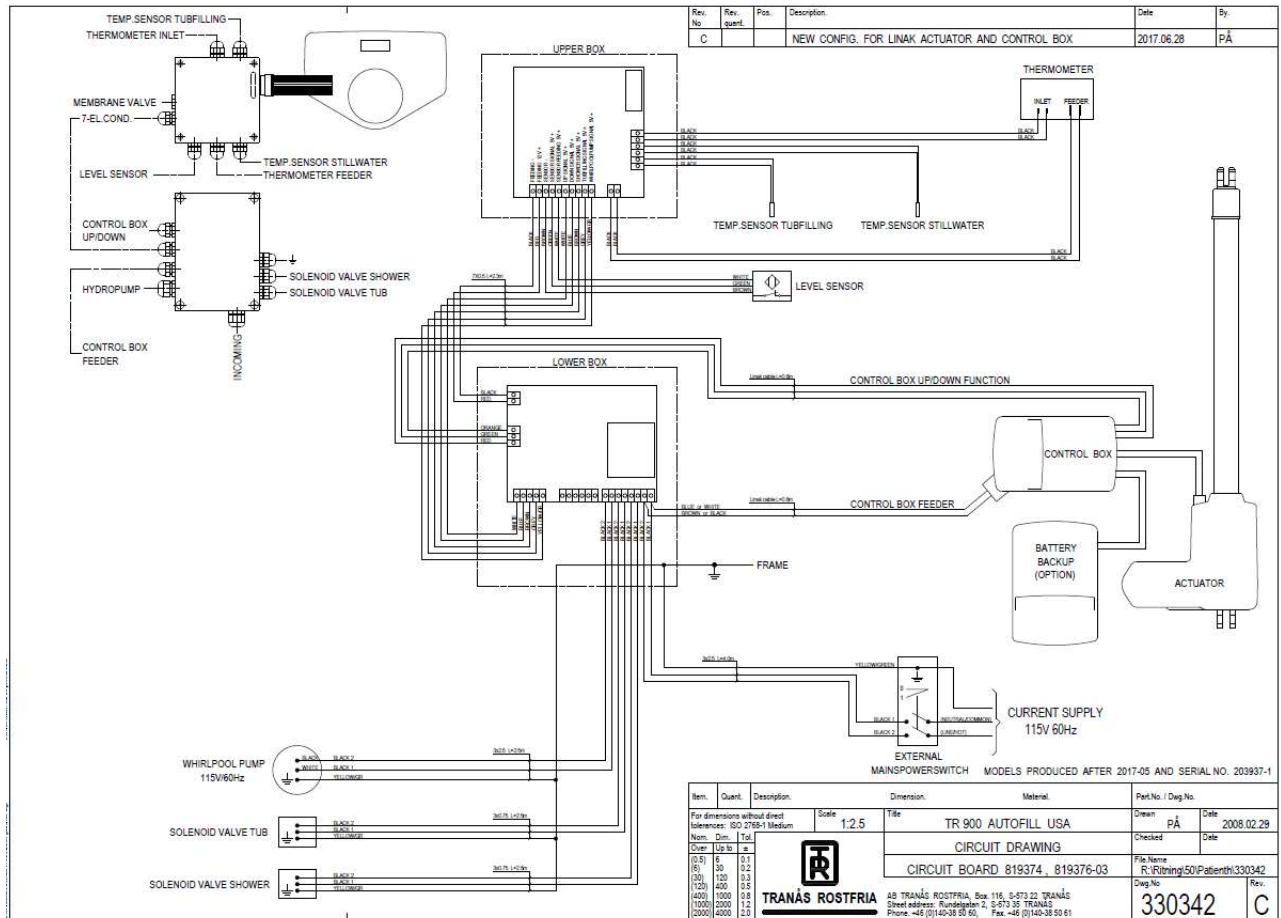


Note:

If your TR900 bathtub is not equipped with Whirlpool pump ignore the wiring diagram for the Whirlpool pump.



115V Wiring diagram Autofill TR900A, CA, CWA




Note:

If your TR900 bathtub is not equipped with Whirlpool pump ignore the wiring diagram for the Whirlpool pump.



Troubleshooting TR900, C, CW:

It's not possible to run the bathtub UP or DOWN:

Is the bathtub connected to the main supply?	No: Connect the bathtub to the main supply.
Is power supplied to the electric enclosure?	No: Turn the power ON.
Is there a Green light from the LED indicator on the control box? 	No: <ul style="list-style-type: none"> If the tub is connected to the mains and power is supplied to the electric enclosure, test to replace the control box. Yes: <ul style="list-style-type: none"> Check that the Lifting actuator connector is properly connected to the control box. Test to replace the UP/DOWN switch. Replace the Lifting actuator.

The lifting column stops when on the way UP.

Does the lifting actuator stop on the way UP?	Yes: Replace the gas spring.
---	-------------------------------------

It's not possible to start filling the tub with water.

Is it possible to open the OPEN/CLOSE valve for tub filling?	Yes: <ul style="list-style-type: none"> Check that all valves are open and that water is supplied to the thermostatic mixer. No: <ul style="list-style-type: none"> Check if the White plastic bushing between knob and valve stem needs to be replaced. Replace if the bushing is worn out. Test to replace the valve stem.
--	---

Water is leaking from the showering units vacuum breaker.

Water leaks from the vacuum breaker?	Yes: <ul style="list-style-type: none"> Test to put on a repair kit on the vacuum breaker. Test to replace the valve stem on the OPEN/CLOSE valve.
--------------------------------------	---



Troubleshooting TR900, C, CW:

Water is leaking from the cleaning units vacuum breaker (if your TR900 bathtub is equipped with cleaning system).

Water leaks from the vacuum breaker?	Yes: <ul style="list-style-type: none">• Test to put on a repair kit on the vacuum breaker.• Test to replace the valve stem on the OPEN/CLOSE valve.
--------------------------------------	--

Water and cleaning liquid isn't mixed properly (if your TR900 bathtub is equipped with cleaning system).

Is water and cleaning liquid mixed properly?	No: <ul style="list-style-type: none">• Make sure that there is cleaning liquid in the container.• Make sure the OPEN/CLOSE valve is fully open.• Make sure that the hose from the container is properly connected to the cleaning injector.• Make sure that there are no nicks on the hose between container and cleaning injector.• Make sure that the cleaning injector isn't closed. If necessary open the adjustment-screw a little bit.• Test to replace the cleaning injector.
--	---

The thermometer isn't working

Is the thermometer working?	No: <ul style="list-style-type: none">• Make sure the bathtub is connected to the mains.• Make sure power is supplied to the electric enclosure.• Make sure 12V is supplied to the thermometer. If not, replace the 12V power supply in the electric enclosure.• If 12V are supplied replace the thermometer.
-----------------------------	---




Troubleshooting TR900, C, CW:

It's not possible to close the drain plug

<p>Is it possible to close the drain plug?</p>	<p>No:</p> <ul style="list-style-type: none"> • Check that the adjustable length on the drain plug center pin isn't too long. Adjust the length if necessary. • Check that the center pin is straight and not bent. Replace drain plug if necessary. • Make sure the wire between overflow drainage and waste isn't broken. Replace complete drainage if necessary. • Make sure the plastic tap behind overflow drainage knob isn't broken. Replace complete drainage if necessary.
--	--

Questions regarding flow rate, water temperature.

<ul style="list-style-type: none"> - No hot water is supplied from the thermostatic mixer during tub filling and showering. - Fluctuating or reduced flow rate during tub filling and showering. - No flow from thermostatic mixer during tub filling and showering. - Maximum blend temperature setting too hot or too cool. 	<p>Yes:</p> <ul style="list-style-type: none"> • See instructions in the Operating manual from the manufacturer of the thermostatic mixer. This manual is supplied at delivery. <div style="text-align: right;">  <p>320 rada</p> <table border="0"> <tr> <td>☐ Deutsch Manual</td> <td>☐ Français au produit</td> <td>☐ Español Manual</td> </tr> <tr> <td>☐ Manual del producto</td> <td>☐ Italiano del prodotto</td> <td>☐ Nederlands Manual</td> </tr> <tr> <td>☐ Bahasa Melayu</td> <td>☐ Polski instrukcja</td> <td>☐ Türkçe Manuel</td> </tr> <tr> <td>☐ Deutschübersetzung</td> <td>☐ Português Manual</td> <td>☐ Română Manual</td> </tr> <tr> <td>☐ 简体中文 7%</td> <td>☐ 中文</td> <td>☐ 中文</td> </tr> </table> <p>124188-002-01</p> </div> <p>Contact TR Equipment or your TR Equipment representative if you need a new manual for the thermostatic mixer.</p>	☐ Deutsch Manual	☐ Français au produit	☐ Español Manual	☐ Manual del producto	☐ Italiano del prodotto	☐ Nederlands Manual	☐ Bahasa Melayu	☐ Polski instrukcja	☐ Türkçe Manuel	☐ Deutschübersetzung	☐ Português Manual	☐ Română Manual	☐ 简体中文 7%	☐ 中文	☐ 中文
☐ Deutsch Manual	☐ Français au produit	☐ Español Manual														
☐ Manual del producto	☐ Italiano del prodotto	☐ Nederlands Manual														
☐ Bahasa Melayu	☐ Polski instrukcja	☐ Türkçe Manuel														
☐ Deutschübersetzung	☐ Português Manual	☐ Română Manual														
☐ 简体中文 7%	☐ 中文	☐ 中文														



Troubleshooting TR900, C, CW:

Whirlpool pump

Note:

Before starting the Whirlpool pump the tub must be filled with water above the jet (21) and the jet must be fully open. If the Whirlpool pump runs dry the sealings inside the Whirlpool pump will be damaged.

Never start the Whirlpool pump without water in the tub covering the jet (21)!



It's not possible to start the Whirlpool pump.

Is the bathtub connected to the main supply?	No: Connect the bathtub to the main supply.
Is power supplied to the electric enclosure and Whirlpool pump?	No: Turn the power ON.
Is the black pneumatic hose between the push button and Whirlpool in a good condition, connected properly and without any nicks?	No: <ul style="list-style-type: none"> • Connect or replace the pneumatic hose. • Replace the pneumatic button.
The Whirlpool pump still doesn't start.	<ul style="list-style-type: none"> • Replace the Whirlpool pump.

The Whirlpool pump doesn't work properly.

If the Whirlpool pump doesn't work properly.	<ul style="list-style-type: none"> • Check that the frame legs are in level. Level the frame legs by adjusting the feet under the panel. Note: the drainage shall not hit the floor, when the bathtub is in its lowest position. • Remove the strain (23) and clean it from hair and dirt and reassemble it. • Make sure the bathtub is filled with water above the jet valve. • Make sure that the air mix control (22) is open.
--	---



Troubleshooting TR900, C, CW:

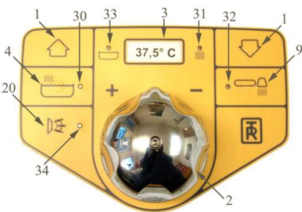
The Whirlpool pump doesn't work properly.

The Whirlpool pump run but no water is coming out of the Jet.	Yes: <ul style="list-style-type: none">• Turn of the Whirlpool pump and try again. An air lock might have been built up inside the pump.• Empty the tub and level the frame legs, refill the bathtub with water above the jet valve and try again.• Adjust the angle of the Whirlpool pump on it's bracket. Loosen the bolts and tilt the Whirlpool pump backwards.
The Whirlpool pump is noisy.	<ul style="list-style-type: none">• Replace the Whirlpool pump.
The Whirlpool pump leaks.	<ul style="list-style-type: none">• Replace the Whirlpool pump.



Troubleshooting Autofill TR900A, CA, CWA:

No water is coming out when you press the tub filling button or showering button on the panel.

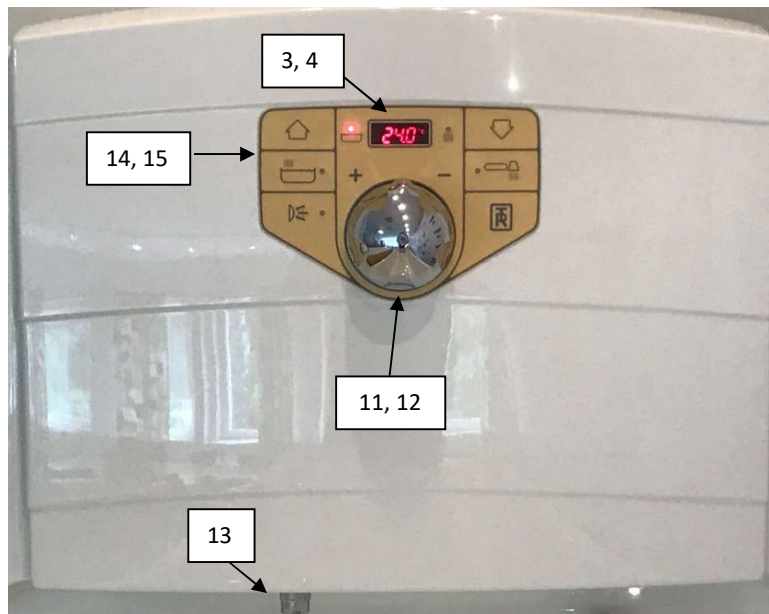
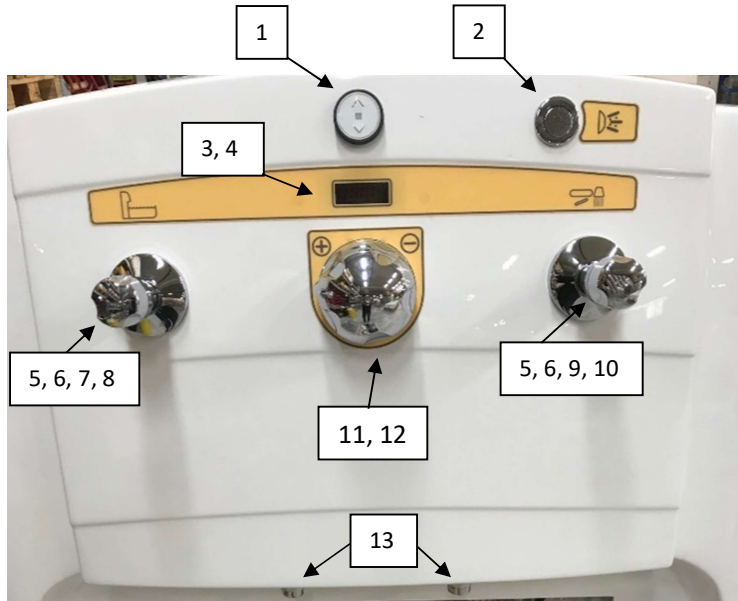
Is the bathtub connected to the main supply?	No: <ul style="list-style-type: none"> Connect the bathtub to the main supply.
Is power supplied to the electric enclosure?	No: <ul style="list-style-type: none"> Turn the power ON.
Is power (12VDC) supplied to the upper circuit board for Autofill function?	No: <ul style="list-style-type: none"> Check the electrical connections between the electric enclosure and the upper circuit board.
Is there a RED light (33) on the control panel? 	No: <ul style="list-style-type: none"> Check that the control board is properly connected to the upper circuit board and that the thin jumper cable isn't damaged. Replace the Yellow control board on the panel.
Does the magnetic valve for the tub filling or showering open when you press the tub filling or showering button on the panel?	No: <ul style="list-style-type: none"> Check that power is supplied to the solenoid valve connector from the lower circuit board when you press the tub filling or showering button on the panel. If no power is supplied, replace the lower circuit board. Open the solenoid valve and clean the small hole on the rubber membrane inside the solenoid valve. Replace the solenoid valve.

The Autofill function doesn't work properly.

The water doesn't stop filling the bathtub with water when it has reached the black level sensor.	<ul style="list-style-type: none"> Wait for 1 minute The autofill continues to fill the bathtub with water for 1 minute when it has reached the level sensor. If the tub filling continues after 1 minute, test to replace the black level sensor. Replace the upper circuit board.
---	--

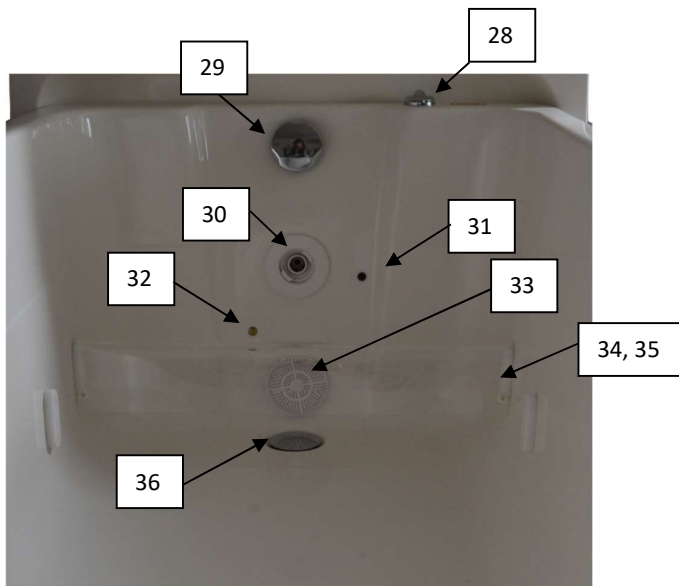
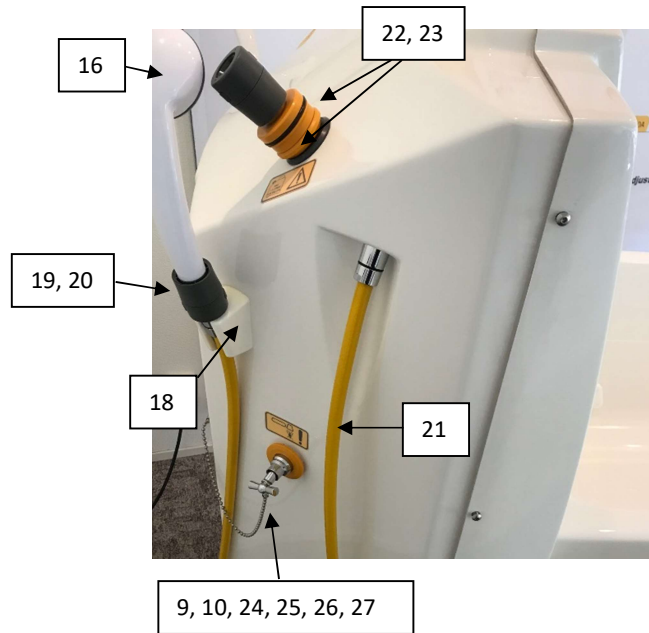
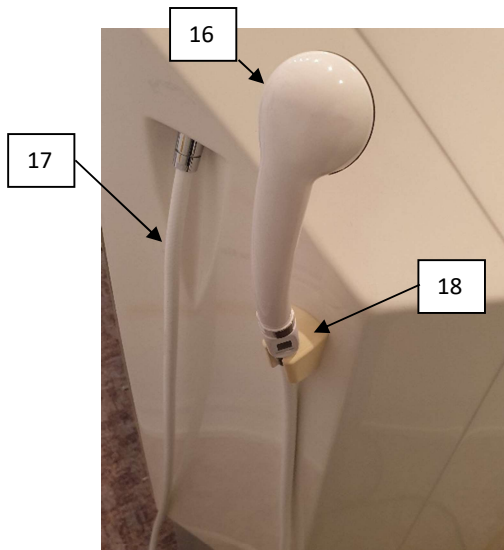


Spare parts list TR900



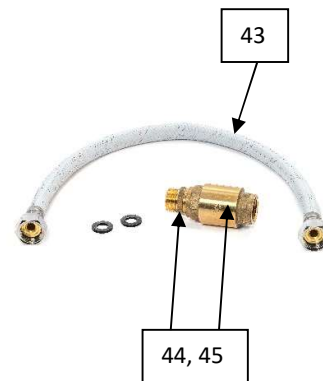
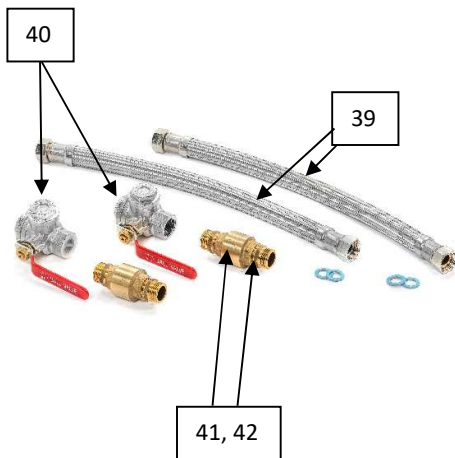
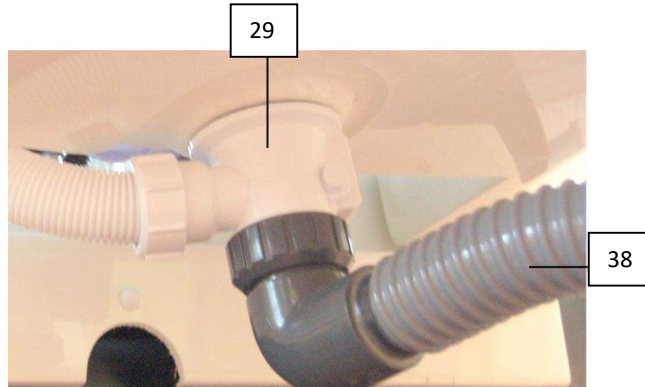


Spare parts list TR900



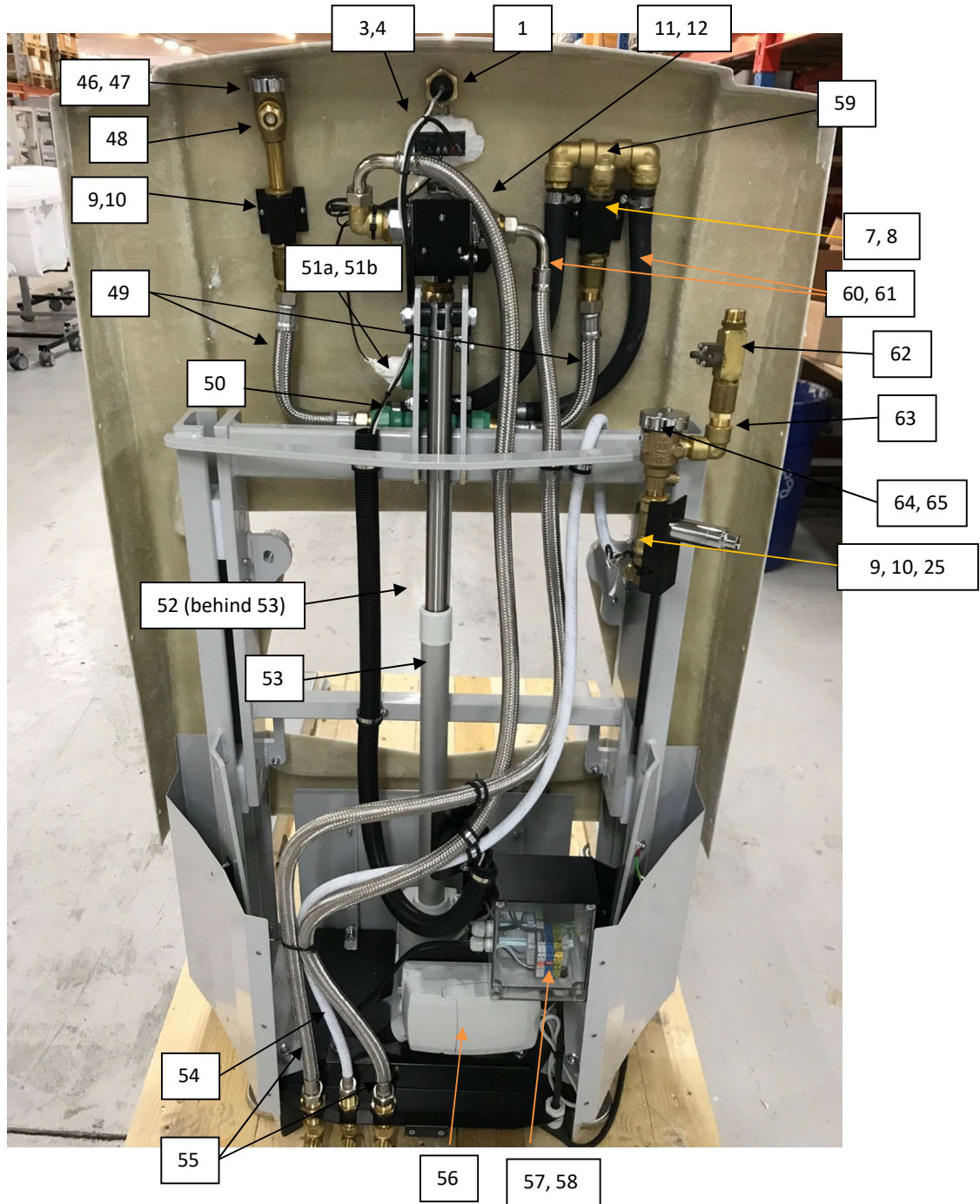


Spare parts list TR900



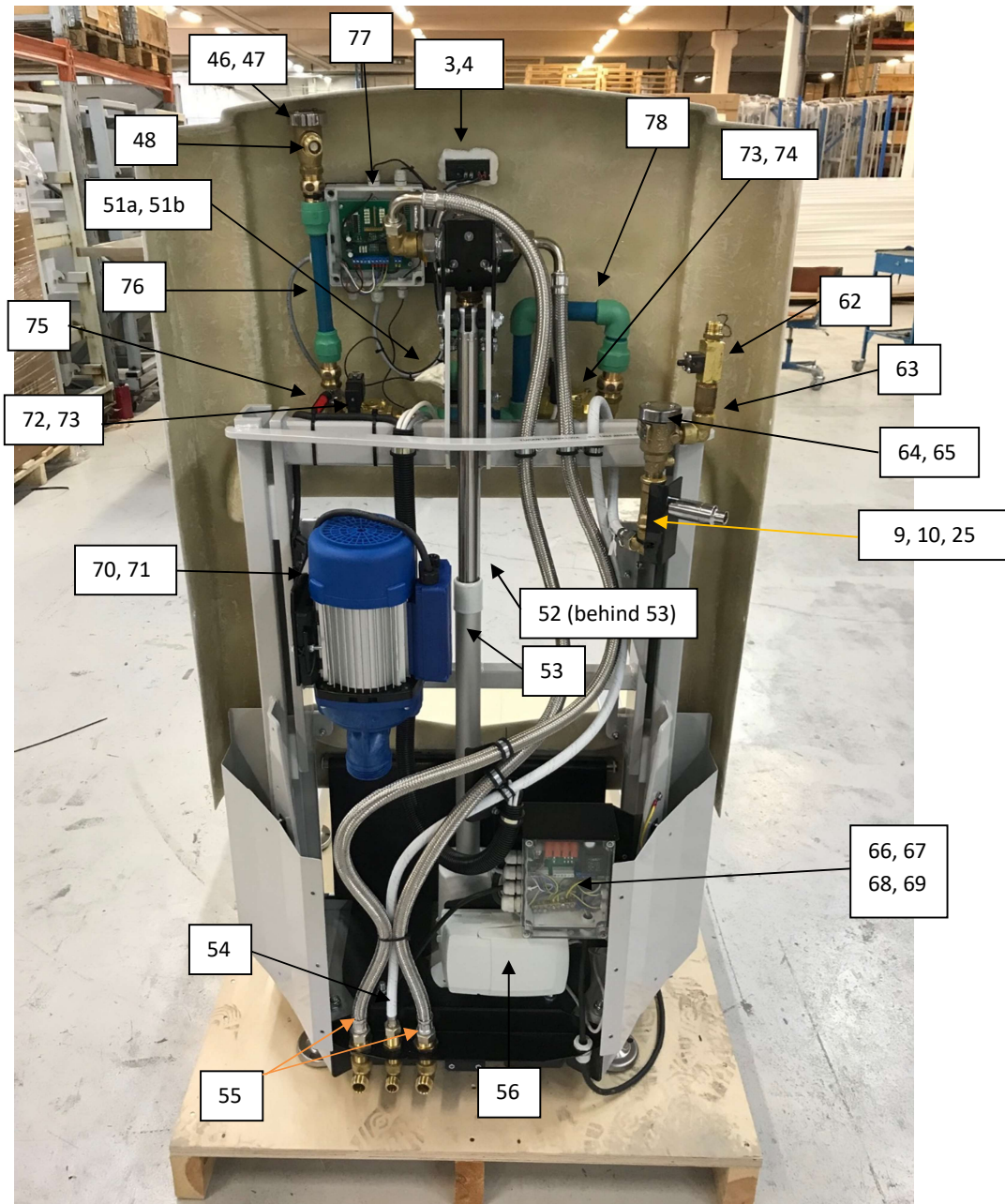


Spare parts list TR900



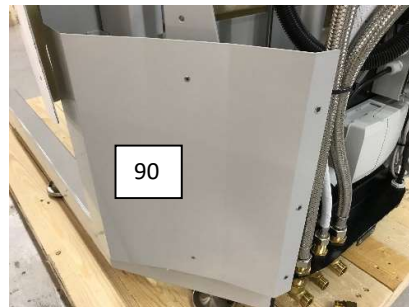
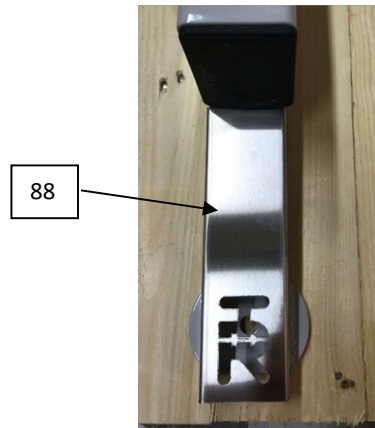
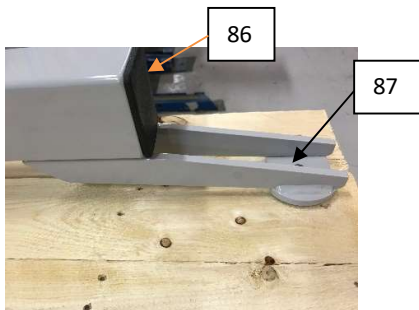
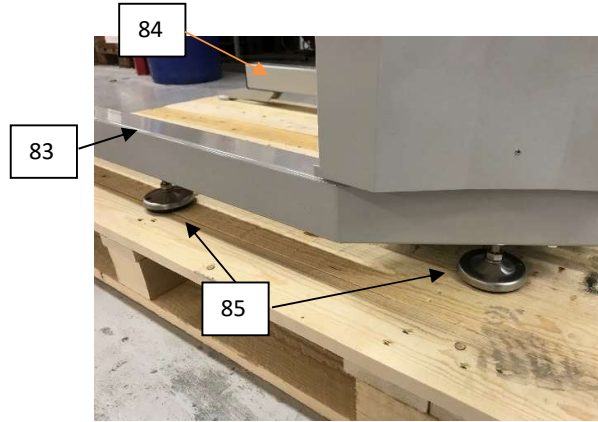
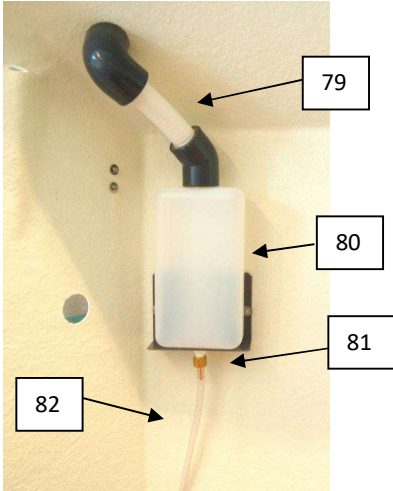


Spare parts list TR900





Spare parts list TR900





Spare parts list TR900

No:	Spare parts, bathtub panel	Article no:
1	UP/DOWN button	815007
2	Pneumatic ON/OFF button, Whirlpool W	829398
3	Digital thermometer, Celsius	819362
4	Digital thermometer, Fahrenheit	819362-2
5	Chrome Knob, Blue	829293-03
6	Plastic bushing	829293-04
7	OPEN/CLOSE Valve ¾", incl. valve stem for tub filling (behind panel)	829293
8	Valve stem for OPEN/CLOSE valve ¾"	829311
9	OPEN/CLOSE Valve ½", incl. valve stem for shower (behind panel)	829288
10	Valve stem for OPEN/CLOSE valve ½"	829307
11	Thermostatic mixer incl. cartridge RADA320F	829067-01
12	Cartridge for mixer	829067-02
13	Filling spout	829087
No:	Spare parts, Autofill bathtub panel	Article no:
3	Digital thermometer, Celsius	819362
4	Digital thermometer, Fahrenheit	819362-2
11	Thermostatic mixer incl. cartridge	829067-01
12	Cartridge for mixer	829067-02
13	Filling spout	829087
14	Control panel A/CA	7327239
15	Control panel CWA	7327238
No:	Spare parts, back cover	Article no:
16	Shower handle	829171
17	White shower hose	829097
18	Bracket for shower handle	829172
19	Grey female quick coupling	829400
20	Grey male quick coupling	829401
21	Yellow cleaning hose	829096
22	Cleaning adaptor (quick coupling not included)	7426823 + 829400
23	Lid cleaning bottle	7426293
24	Yellow bushing, cleaning	7426294
25	Cleaning valve ½" incl. valve, valve stem, key & chromed parts	829289
26	Key for cleaning valve	829289-02
27	Chain, cleaning	850239



Spare parts list TR900

No:	Spare parts, tub	Article no:
28	Air mix control, Whirlpool W	850610
29	Overflow drainage incl. overflow, drainage and drain plug.	829280
30	Jet valve, Whirlpool W	850606
31	Level sensor, Autofill A	3427553
32	Temperature sensor	819378
33	Strain, Whirlpool W	850600
34	Foot support 95mm	7125655
35	Foot support, Large 145mm	7126911
36	Drain plug	829279
37	Pillow (option)	7419488-02
38	Drainage hose TR900 incl. plastic pipes	3426346
No:	Spare parts, installation kit	Article no:
	Complete installation kit R20	05193010
39	Flexible hose ¾" incl. gaskets	7418351
40	Valve ¾" incl. strainer	850260
41	Check valve ¾"	829066
42	Hexagon nipple ¾"	820198-5258
	Complete installation kit, US version	05193011
39	Flexible hose ¾" incl. gaskets	7418351
40	Valve ¾" incl. strainer	850260
41	Check valve ¾"	829066
42	Hexagon nipple ¾"	820198-5258
	Hexagon Nipple ¾" R20/NPT20	7418135
No:	Spare parts, cleaning installation kit R15	Article no:
	Complete installation kit R20	
43	Hose ½" incl. gaskets	7426262-02
44	Hexagon nipple ½"	820198-5233
45	Check valve ½"	820495-0127
No:	Spare parts, inside panel	Article no:
46	Vacuum breaker 288 for shower	829069
47	Repair kit for vacuum breaker 288	
48	Check valve	829080
49	Flexible hose ¾" for shower and tub filling 230mm	7426194
50	Water supply pipe system incl. flexible hoses 230mm 7426194	2226048
51a	Nipple for temperature sensor	3425961
51b	Temperature sensor	819378
52	Gas spring	850192-02
53	Linear actuator	815001
54	Connecting hose cleaning	850613



Spare parts list TR900

55	Connecting hose hot and cold water	7426193
56	Control box 110-240VAC	815000
57	Parts electric enclosure TR900, TR900C, TR900CW 230V:	
	Plastic enclosure	819364
	Cable gland PG13.5	819059
	Cable gland PG9	851650
	Cable gland PG7	851651
	DC supply 230V/12V	819360
58	Parts electric enclosure TR900, TR900C, TR900CW 115V:	
	Plastic enclosure	819364
	Cable gland PG13.5	819059
	Cable gland PG9	851650
	Cable gland PG7	851651
	DC supply 120V/12V	819360-2
59	T-Connection tub filling incl:	
	1pcs T-Connection R20	820198-4251
	2pcs fitting 90°	820198-2859
	2pcs hose connection	820217-4225
60	Tub filling hose 380mm	200007
61	Tub filling hose 420mm	200008

No:	Spare parts, cleaning unit	Article no:
	Complete cleaning unit including part no: 9, 10, 25, 62, 63, 64	200015
62	Injector cleaning	829070
63	Check valve	829080
64	Vacuum breaker 289, cleaning	829065
65	Repair kit 289	
No:	Spare parts, inside panel	Article no:
66	Parts electric enclosure TR900A, TR900CA, TR900CWA 230V:	
	Plastic enclosure 230V	819364
	Cable gland PG13.5	819059
	Cable gland PG9	851650
67	Lower circuit board 230V, Autofill	819376-02
68	Parts electric enclosure TR900A, TR900CA, TR900CWA 115V:	
	Plastic enclosure 230V	819364
	Cable gland PG13.5	819059
	Cable gland PG9	851650
69	Lower circuit board 115V, Autofill	819376-03
70	Whirlpool pump 230V	819041-3
71	Whirlpool pump 115V	819041-5
72	Solenoid valve 230V ½" for shower	829180
73	Coil 115V for solenoid valve ½" and ¾"	829183
74	Solenoid valve 230V ¾" for tub filling	829181



Spare parts list TR900

75	Valve Ballofix	829084
76	Water supply pipe, shower, Autofill	2427341
77	Upper circuit board, Autofill	819374
78	Water supply pipe, tub filling, Autofill	2227134
No:	Spare parts, inside panel	Article no:
79	Filling pipes, cleaning container	3326268
80	Container, cleaning liquid	850614
81	Hose connection	829088
82	Hose	7426262
83	Tripod leg, Left (seen from behind)	3325839
84	Tripod leg, Right (seen from behind)	3325839-02
85	Foot for tripod leg	3418105-02
86	End plug	850210
87	Front foot	3325835
88	Front foot plate with TR logotype	3426029
89	Side cover, Left	200114
90	Side cover, Right	200114-02



Check list

Annual maintenance TR900

Visual control		
The bathtub stands securely on the floor? Yes <input type="checkbox"/> No <input type="checkbox"/>	Comment:	Action:
The bathtub is in its lowest position before use? Yes <input type="checkbox"/> No <input type="checkbox"/>	Comment:	Action:
Any visible damages on the bathtub that can hurt the patient? Yes <input type="checkbox"/> No <input type="checkbox"/>	Comment:	Action:
Is the bathtub properly cleaned? Yes <input type="checkbox"/> No <input type="checkbox"/>	Comment:	Action:



Electrical connections

Inspection of the electrical installation and of the equipment according to local requirements. Yes <input type="checkbox"/> No <input type="checkbox"/>	Comment:	Action:
Power cord in good condition and without damages? Yes <input type="checkbox"/> No <input type="checkbox"/>	Comment:	Action:
Power cord properly connected inside the electrical enclosure? Yes <input type="checkbox"/> No <input type="checkbox"/>	Comment:	Action:


Plumbing connections

Connecting hoses for Hot and Cold water correctly fitted and without any leakage? Yes <input type="checkbox"/> No <input type="checkbox"/>	Comment:	Action:
Drainage hose properly fitted, without leakage and damages? Yes <input type="checkbox"/> No <input type="checkbox"/>	Comment:	Action:

Also inspect check valves on connecting hoses for Hot and Cold water (Supplied by the installer).



Function control of Actuator, Gas spring, Thermostatic mixer, Valves and drainage



<p>Possible to raise and lower the bathtub?</p> <p>Yes <input type="checkbox"/> No <input type="checkbox"/></p>	<p>Comment:</p>	<p>Action:</p>
<p>Exercise the Thermostatic mixer:</p> <ul style="list-style-type: none"> - Move the temperature control rapidly from cold to hot and hot back to cold several times pausing at extreme.  <p>Temperature on the mixer ok?</p> <p>Yes <input type="checkbox"/> No <input type="checkbox"/></p>	<p>Comment:</p>	<p>Action:</p>
<p>Any leakage from the thermostatic mixer?</p> <p>Yes <input type="checkbox"/> No <input type="checkbox"/></p>	<p>Comment:</p>	<p>Action:</p>
<p>Is maximum temperature Max 43°.</p> <p>Yes <input type="checkbox"/> No <input type="checkbox"/></p>	<p>Comment:</p>	<p>Action:</p>
<p>Perform a scalding test, Shut OFF cold water supply to the tub. The mixer shall shut OFF when only Hot water is supplied.</p> <p>Scalding function working?</p> <p>Yes <input type="checkbox"/> No <input type="checkbox"/></p>	<p>Comment:</p>	<p>Action:</p>

If the mixer doesn't shut OFF when only HOT water is supplied, the mixer or cartridge MUST BE REPLACED!

Also read Manual from the supplier of the Thermostatic mixer if additional controls need to be performed. Manual supplied at delivery.



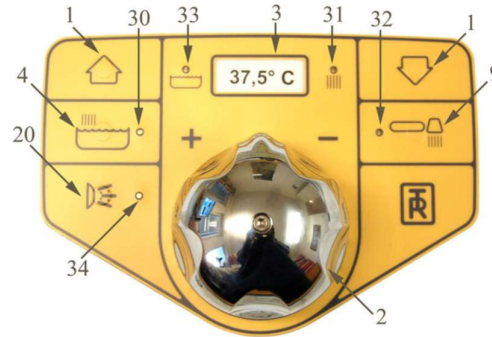
Function control of Actuator, Gas spring, Thermostatic mixer, Valves and drainage

<p>Does the shower valve open and close properly?</p> <p>Yes <input type="checkbox"/> No <input type="checkbox"/></p>	<p>Comment:</p>	<p>Action:</p>
<p>Does the tub filling valve open and close properly?</p> <p>Yes <input type="checkbox"/> No <input type="checkbox"/></p>	<p>Comment:</p>	<p>Action:</p>
<p>Does the vacuum breaker open and close properly?</p> <p>Yes <input type="checkbox"/> No <input type="checkbox"/></p> 	<p>Comment:</p>	<p>Action:</p>
<p>Any leakage from the vacuum breaker?</p> <p>Yes <input type="checkbox"/> No <input type="checkbox"/></p> 	<p>Comment:</p>	<p>Action:</p>
<p>Possible to Open and Close the drainage plug?</p> <p>Yes <input type="checkbox"/> No <input type="checkbox"/></p>	<p>Comment:</p>	<p>Action:</p>
<p>Are the strainers on the shower handle properly cleaned?</p> <p>Yes <input type="checkbox"/> No <input type="checkbox"/></p>	<p>Comment:</p>	<p>Action:</p>
<p>Is the white shower hose in good condition and without damages?</p> <p>Yes <input type="checkbox"/> No <input type="checkbox"/></p>	<p>Comment:</p>	<p>Action:</p>

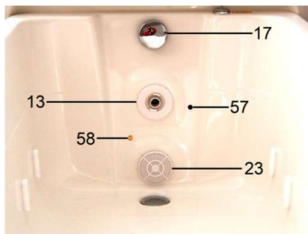


Function control Autofill

Is the bathtub equipped with this Option? Yes No



<p>Possible to start the tub filling function (4)?</p> <p>Yes <input type="checkbox"/> No <input type="checkbox"/></p>	<p>Comment:</p>	<p>Action:</p>
<p>Does the tub filling stop when it reaches the first level (57)?</p> <p>Yes <input type="checkbox"/> No <input type="checkbox"/></p>	<p>Comment:</p>	<p>Action:</p>
<p>Possible to start the shower function (9)?</p> <p>Yes <input type="checkbox"/> No <input type="checkbox"/></p>	<p>Comment:</p>	<p>Action:</p>



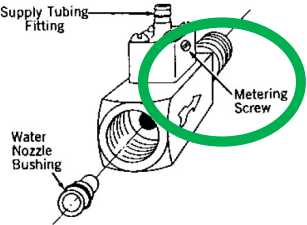
The tub filling will stop 1 minute after the water has reached the level sensor (57).

When you press the tub filling button again it will fill the tub for 1 more minute.



Function control, Cleaning system

Is the bathtub equipped with this Option? Yes No

<p>Liquid container filled with cleaning detergent inside the back panel?</p> <p>Yes <input type="checkbox"/> No <input type="checkbox"/></p>	<p>Comment:</p>	<p>Action:</p>
<p>Possible to Open and Close the Cleaning function?</p> <p>Yes <input type="checkbox"/> No <input type="checkbox"/></p>	<p>Comment:</p>	<p>Action:</p>
<p>Any leakage from the cleaning unit and cleaning vacuum breaker inside the panel?</p> <p>Yes <input type="checkbox"/> No <input type="checkbox"/></p>	<p>Comment:</p>	<p>Action:</p>
<p>Is the hose between the liquid container and the cleaning unit in good condition and without damages?</p> <p>Yes <input type="checkbox"/> No <input type="checkbox"/></p>	<p>Comment:</p>	<p>Action:</p>
<p>Cleaning liquid and water properly mixed?</p> <p>Yes <input type="checkbox"/> No <input type="checkbox"/></p> <p>If necessary adjust the concentration by turning the “metering screw” on the cleaning injector. Adjust ¼ turn at the time and check how water and cleaning liquid are mixed.</p>	<p>Comment:</p> 	<p>Action:</p>



Function control, Cleaning system

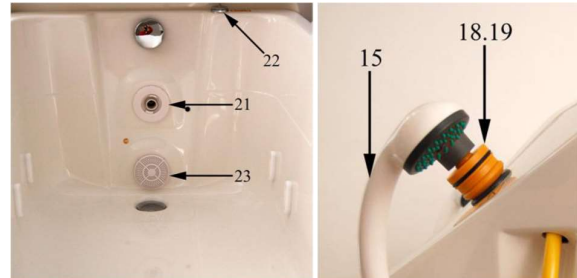
Is the Yellow Cleaning shower hose in good condition and without damages? Yes <input type="checkbox"/> No <input type="checkbox"/>	Comment:	Action:
Are the strainers on the Cleaning shower handle properly cleaned? Yes <input type="checkbox"/> No <input type="checkbox"/>	Comment:	Action:



Function control Whirlpool

Bathtub equipped with this option? Yes No

Important:
The tub must be filled with water when you test the Whirlpool pump. Never test the Whirlpool pump without water in the tub, it will damage the pump.



Possible to Start and Stop the Whirlpool pump? Suction OK? Yes <input type="checkbox"/> No <input type="checkbox"/>	Comment:	Action:
Any leaks from the Whirlpool pump? (See inside the back panel) Yes <input type="checkbox"/> No <input type="checkbox"/>	Comment:	Action:
The safety screen (23) in place? Yes <input type="checkbox"/> No <input type="checkbox"/>	Comment:	Action:
Possible to adjust the Whirlpool jet (21)? Yes <input type="checkbox"/> No <input type="checkbox"/>	Comment:	Action:
Possible to adjust air inlet (22)? Yes <input type="checkbox"/> No <input type="checkbox"/>	Comment:	Action:
Is the cleaning adapter (19) available? Yes <input type="checkbox"/> No <input type="checkbox"/>	Comment:	Action:



Other:

Bathtub OK to use

Yes

No

Company / Person:

Maintenance date:

Serial number:

Signature:

