



Whitehall Manufacturing®
Manufacturer of Healthcare and Rehabilitation Products since 1946

Division of
Acorn Engineering Company®



A MEMBER OF



Extremity Whirlpools

Use



E Series 27 Gallon Stationary Whirlpool

WHE-27-S



WHE-27-S

Whitehall WHE-27-S Stationary Whirlpool Tank Capacity is 27 gallons.

Whirlpool Tank is 28"L x 15"W x 21"D and is seamless welded construction, fabricated from heavy gauge, type 304 stainless steel, polished to a satin finish. Tank rim is reinforced with a concealed stainless steel rod. Tank bottom is seamless, coved (rounded) design for effective cleaning. Tank is also provided with an extended stainless steel skirt flush to the floor line to conceal internal drain piping.

A 2" Combination Drain Overflow and a Filler Spout are provided.

Turbine Raising and Lowering Device permits adjustment of desired height and direction of water agitation towards the area of the body during Whirlpool use. It is spring balanced and provided with a locking device.

Turbine Assembly is equipped with Underwriters Laboratory listed 1/2 HP jet pump motor protected with an ABS plastic shell, automatic thermal overload protector, and lifetime-sealed bearings. All parts contacting the water are stainless steel, chrome plated brass or bronze.

Thermometer is provided with a dual scale, adjustable calibration, and a stem inserts into a retainer to prevent rattle during whirlpool agitation.

GUIDE SPECIFICATIONS

Provide Whitehall Stationary Whirlpool (specify model number and options) with a 27-gallon capacity, 28"L x 15"W x 21"D. Whirlpool shall be fabricated from heavy gauge, type 304 stainless steel. Construction shall be seamless welded and exposed surfaces shall be polished to satin finish. Tank shall have a reinforced rim and shall be fitted with a stainless steel skirt flush to the floor line. Bottom of tank shall be a seamless, rounded coved design. Provide a 2" combination Drain Overflow, and a filler spout. Provide a turbine assembly with raising and lowering device which functions as an agitator and permits adjustment of desired height, direction of water agitation, and can be locked into place. Turbine assembly shall be UL listed 1/2 HP jet pump motor with automatic thermal overload protector and lifetime-sealed bearings. Provide a thermometer with a stem retainer to prevent rattle when whirlpool is in operation.

Please visit www.whitehallmfg.com
for most current specifications.



Whitehall Mfg. • P.O. Box 3527 • City of Industry, CA 91744 • (800) 591-9280 • (626) 968-6681

WHE-27-S

NEW: 09/12/2024



Whitehall Manufacturing®
Manufacturer of Healthcare and Rehabilitation Products since 1946

Extremity Whirlpools

MODEL NUMBER AND OPTION SELECTIONS

Series

☒ WHE Extremity Series

Capacity

☒ -27 Gallons

Type

☒ -S Stationary Whirlpool

Turbine Electrical Requirements

☐ 115VAC / 50Hz ☐ 115VAC / 60HZ

☐ 230VAC / 50Hz ☐ 230VAC / 60HZ

Country of Use _____

For Mixing Valve:

Refer to supplemental MXT15-OTG and DU-1 sheet for details.

Suffix Options (See Whirlpool Options Section for Details)

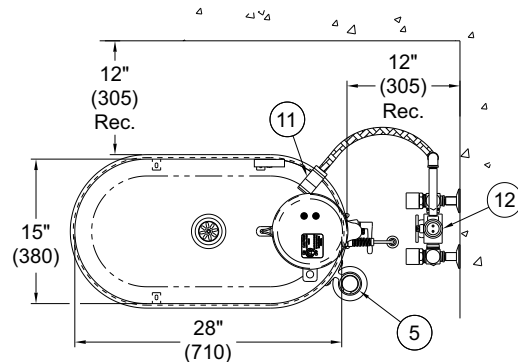
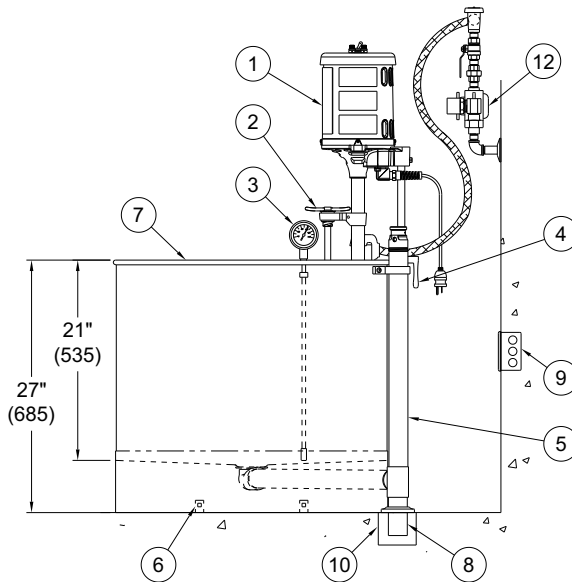
- ☐ -EG Enviro-Glaze® Color Powder Coating -
Specify Color: _____
<https://www.whitehallmfg.com/enviro-glaze>
- ☐ -GFI Ground Fault Interrupter
- ☐ -LOGO Applied Logos: Team, Facility, Company Logo
- ☐ -SDO Separate Drain Overflow Assembly

ELECTRIC REQUIREMENTS:

Amps: 6.9/6.2 Hertz: 50/60
Volts: 115 GFI Receptacle

ELECTRIC REQUIREMENTS:

Amps: 3.5/3.1 Hertz: 50/60
Volts: 230 GFI Receptacle



NOTES:

1. 1/2 HP Jet Pump Motor
2. Variable Pressure Control
3. Thermometer
4. Turbine Raising & Lowering Device

STATIONARY WHE-27-S SERIES WHIRLPOOL

5. Combination Drain & Overflow Assembly
6. "L" Brackets - (4) Four Each
7. Stainless Steel Tank
8. 2" O.D. x 5" Tailpiece
9. 3 Pole GFI Receptacle by Others
10. Floor Drain by Others
11. Filler Spout
12. Mixing Valve, Shown For Reference Only

WARNING: Cancer and Reproductive Harm - www.P65Warnings.ca.gov

All dimensions are nominal and subject to manufacturer's change without notice. Whitehall assumes no responsibility for use of void or superseded data. © Whitehall Manufacturing, Member of Morris Group International. Please visit www.whitehallmfg.com for most current specifications.

SELECTION SUMMARY & APPROVAL FOR MANUFACTURING

Model Number & Options _____ Quantity _____
Company _____ Date _____
Contact _____ Title _____
Approval for Manufacturing/Signature _____

Whitehall Mfg. • P.O. Box 3527 • City of Industry, CA 91744 • (800) 591-9280 • (626) 968-6681

WHE-27-S

NEW: 09/12/2024